



Standard Specifications

RS007N-B

1st ed. 10-Apr-20
2nd ed. 13-Oct-20
3rd ed. 11-Sep-24

Kawasaki Heavy Industries, Ltd.
Robot Business Division

Specification number : 90151-0313DEC

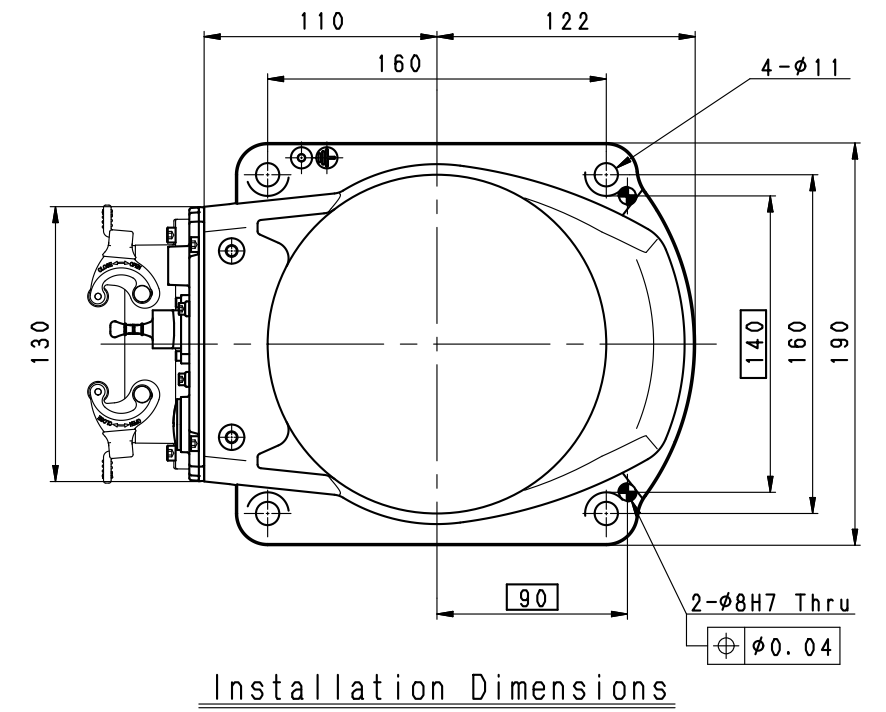
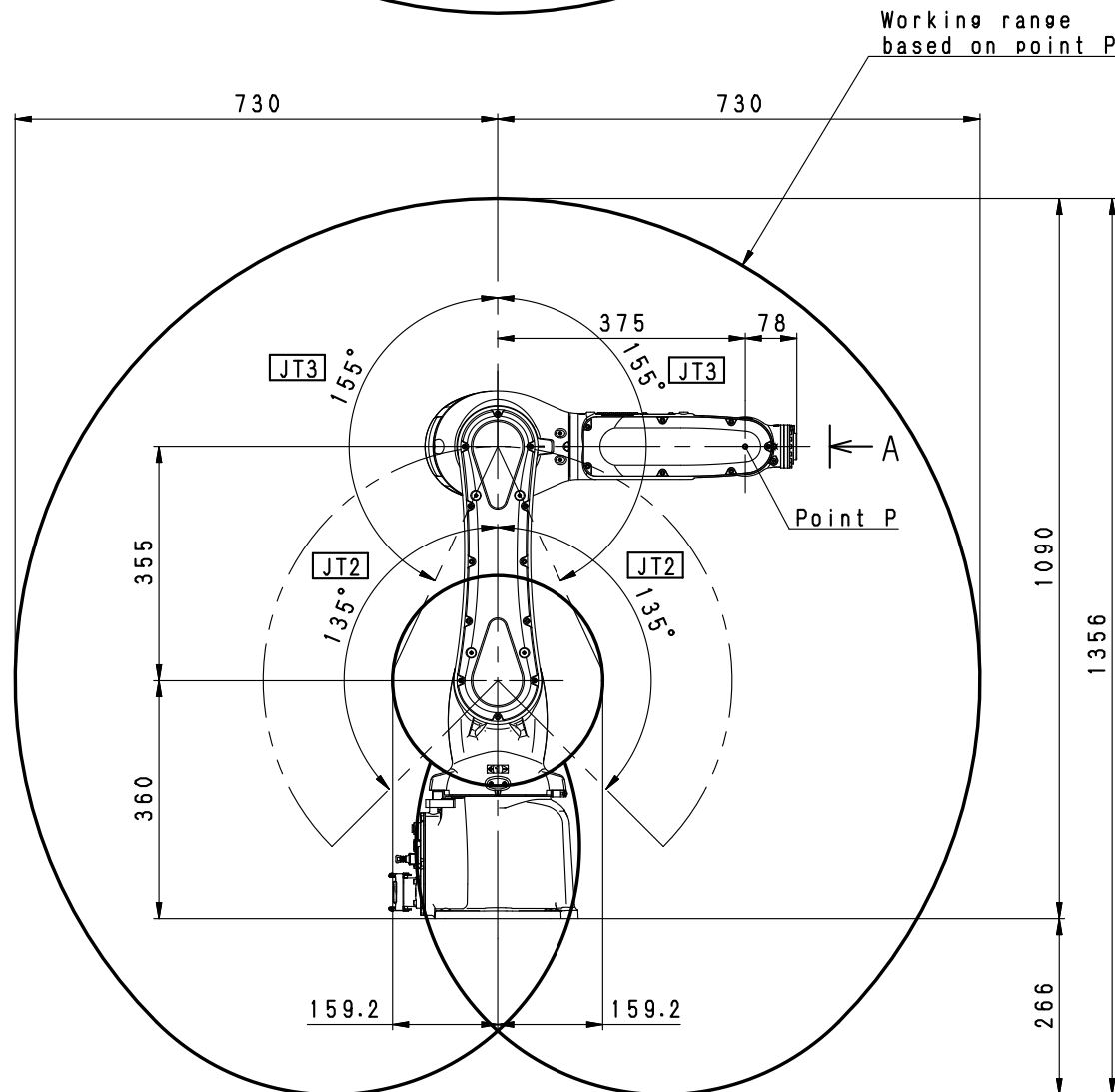
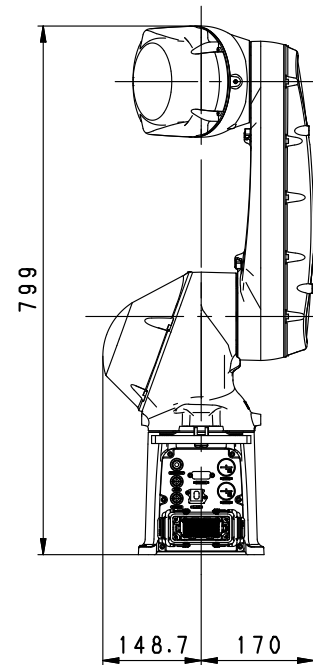
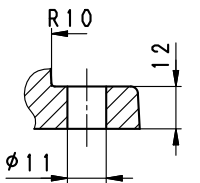
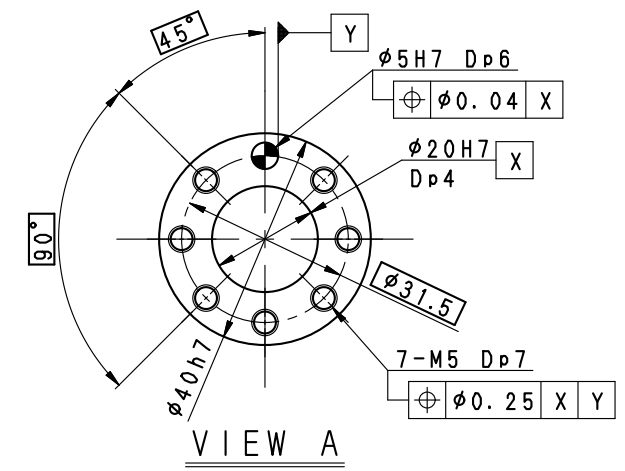
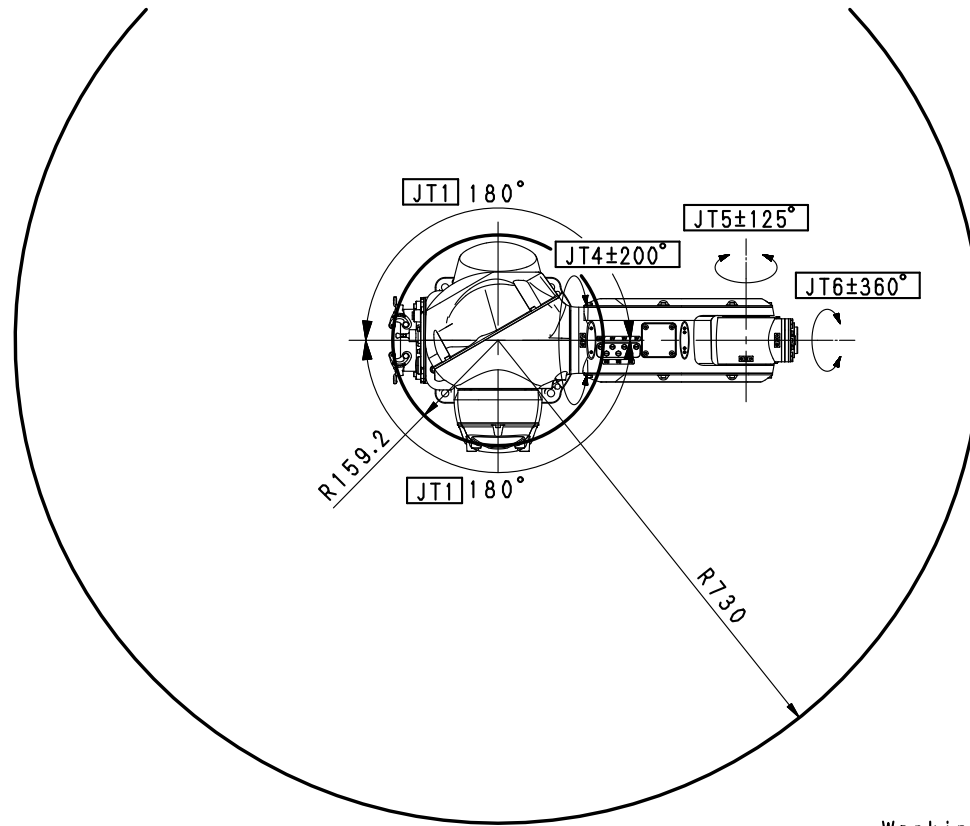
Materials and specifications are subject to change without notice.

Robot specifications

1. Model	RS007N-B																						
2. Type	Articulated robot																						
3. Degree of freedom	6 axes																						
4. Max. payload	7 kg																						
5. Max. reach	730 mm																						
6. Position repeatability	±0.02 mm (wrist flange surface) conforms to ISO 9283																						
7. Axis specification	<table border="1"> <thead> <tr> <th>Operating axis</th> <th>Motion range</th> <th>Max. speed</th> </tr> </thead> <tbody> <tr> <td>Arm rotation (JT1)</td> <td>±180°</td> <td>470°/s</td> </tr> <tr> <td>Arm out-in (JT2)</td> <td>±135°</td> <td>380°/s</td> </tr> <tr> <td>Arm up-down (JT3)</td> <td>±155°</td> <td>520°/s</td> </tr> <tr> <td>Wrist swivel (JT4)</td> <td>±200°</td> <td>550°/s</td> </tr> <tr> <td>Wrist bend (JT5)</td> <td>±125°</td> <td>550°/s</td> </tr> <tr> <td>Wrist twist (JT6)</td> <td>±360°</td> <td>1,000°/s</td> </tr> </tbody> </table>		Operating axis	Motion range	Max. speed	Arm rotation (JT1)	±180°	470°/s	Arm out-in (JT2)	±135°	380°/s	Arm up-down (JT3)	±155°	520°/s	Wrist swivel (JT4)	±200°	550°/s	Wrist bend (JT5)	±125°	550°/s	Wrist twist (JT6)	±360°	1,000°/s
Operating axis	Motion range	Max. speed																					
Arm rotation (JT1)	±180°	470°/s																					
Arm out-in (JT2)	±135°	380°/s																					
Arm up-down (JT3)	±155°	520°/s																					
Wrist swivel (JT4)	±200°	550°/s																					
Wrist bend (JT5)	±125°	550°/s																					
Wrist twist (JT6)	±360°	1,000°/s																					
8. Load capacity of wrist	<table border="1"> <thead> <tr> <th></th> <th>Max. torque</th> <th>Moment of inertia*¹</th> </tr> </thead> <tbody> <tr> <td>JT4</td> <td>17.0 N·m</td> <td>0.50 kg·m²</td> </tr> <tr> <td>JT5</td> <td>17.0 N·m</td> <td>0.50 kg·m²</td> </tr> <tr> <td>JT6</td> <td>10.0 N·m</td> <td>0.20 kg·m²</td> </tr> </tbody> </table> <p>Note *¹ Each value in this table shows allowable moment of inertia of JT4/JT5/JT6 when max. allowed torque is applied to each axis. If more detailed data is required for your application, please contact Kawasaki.</p>			Max. torque	Moment of inertia* ¹	JT4	17.0 N·m	0.50 kg·m ²	JT5	17.0 N·m	0.50 kg·m ²	JT6	10.0 N·m	0.20 kg·m ²									
	Max. torque	Moment of inertia* ¹																					
JT4	17.0 N·m	0.50 kg·m ²																					
JT5	17.0 N·m	0.50 kg·m ²																					
JT6	10.0 N·m	0.20 kg·m ²																					
9. Mass	35 kg (without options)																						
10. Mounting	Floor or Ceiling mounting																						
11. Installation Environment	Ambient Temperature: 0 - 45 °C																						
	Relative Humidity: 35 - 85 % (with no dew condensation)																						
12. Color	Munsell 10GY9/1 equivalent																						
13. Degree of protection	Wrist: IP67 equivalent, Arm: IP65 equivalent																						
14. Cleanliness	Class 6 equivalent Not a guaranteed value																						
15. Built-in utilities	Pneumatic piping (φ6 × 1 lines)																						
16. Options	Mounting	Wall mounting																					
	Degree of protection	Arm : IP67 equivalent																					
	Option harness * ²	Sensor harness (8 circuits)																					
		LAN harness (CAT5e, straight)																					
		External axis harness through wrist (motor/signal)																					
		External axis harness through base (motor/signal)																					
		Type D0 (I/O through harness)																					
	Solenoid valve	Double solenoid / Single solenoid valves (3 units max.)																					
	Air cleaning	Filter, Regulator, Mist separator																					
	Mechanical stopper	Adjustable stopper JT1																					
	Adapter plate	RS003/RS005 changing plate																					
	Installation stand	300 mm, 600 mm height																					
	Base plate	400 mm × 400 mm																					
Servo on lamp	Comply with UL (Lamp color: yellow)																						

*2: Not all option harness can be selected. Consult Kawasaki.

Consult Kawasaki about maintenance parts and spare parts.



RS007N-B
WORKING RANGE