

Kawasaki Heavy Industries, Ltd

Robot Business Division

Tokyo Head Office/Robot Division

1-14-5, Kaigan, Minato-ku, Tokyo 105-8315, Japan
Phone: +81-3-3435-2501 Fax: +81-3-3437-9880

Akashi Works/Robot Division

1-1, Kawasaki-cho, Akashi, Hyogo 673-8666, Japan
Phone: +81-78-921-2946 Fax: +81-78-923-6548

Nishi-Kobe Works/Robot Division

234, Matsumoto, Hasetani-cho, Nishi-ku, Kobe, Hyogo 651-2239, Japan
Phone: +81-78-915-8136 Fax: +81-78-915-8274

Kawasaki Robotics website

<https://kawasakirobotics.com/>



Kawasaki Robostage (showroom)

<https://kawasakirobotics.com/jp-sp/robostage/en/>



Kawasaki Robot

Small-to-Medium Robots

up to 80kg payload

Small-to-medium robots
up to 80kg payload

Large robots
up to 300kg payload

Extra large robots
up to 1,500kg payload

Dual-arm Collaborative robots

Explosion-proof painting robots

Sealing robots

Arc welding robots

Palletizing robots

Medical & pharmaceutical robots

Picking robots

Wafer transfer robots

Global Network

Kawasaki Robotics (USA), Inc.

28140 Lakeview Drive, Wixom, MI 48393, U.S.A.
Phone: +1-248-446-4100 Fax: +1-248-446-4200

Kawasaki Robotics (UK) Ltd.

Unit 4 Easter Court, Europa Boulevard, Westbrook
Warrington Cheshire, WA5 7ZB, United Kingdom
Phone: +44-1925-71-3000 Fax: +44-1925-71-3001

Kawasaki Robotics GmbH

Im Taubental 32, 41468 Neuss, Germany
Phone: +49-2131-34260 Fax: +49-2131-3426-22

Kawasaki Robotics Korea, Ltd.

43, Namdong-daero 215beon-gil, Namdong-gu, Incheon,
21633, Korea
Phone: +82-32-821-6941 Fax: +82-32-821-6947

Kawasaki Robotics (Tianjin) Co., Ltd.

1-2/F, Building 6, No.19 Xinhuan Road, TEDA, China
Phone: +86-22-5983-1888 Fax: +86-22-5983-1889

Taiwan Kawasaki Robot Center

3F, No.31, Ln.216, Gongyuan Rd., Hsinchu City
30069, Taiwan(R.O.C)
Phone: +886-3-562-0518

Kawasaki Motors Enterprise (Thailand) Co., Ltd.

(Rayong Robot Center)
119/10 Moo 4 T.Pluaek Daeng, A.Pluaek Daeng, Rayong 21140
Thailand
Phone: +66-38-955-040-58 Fax: +66-38-955-145

Singapore Kawasaki Robot Center

100G Pasir Panjang Road #06-10
Singapore 118523
Phone: +65-6513-3145

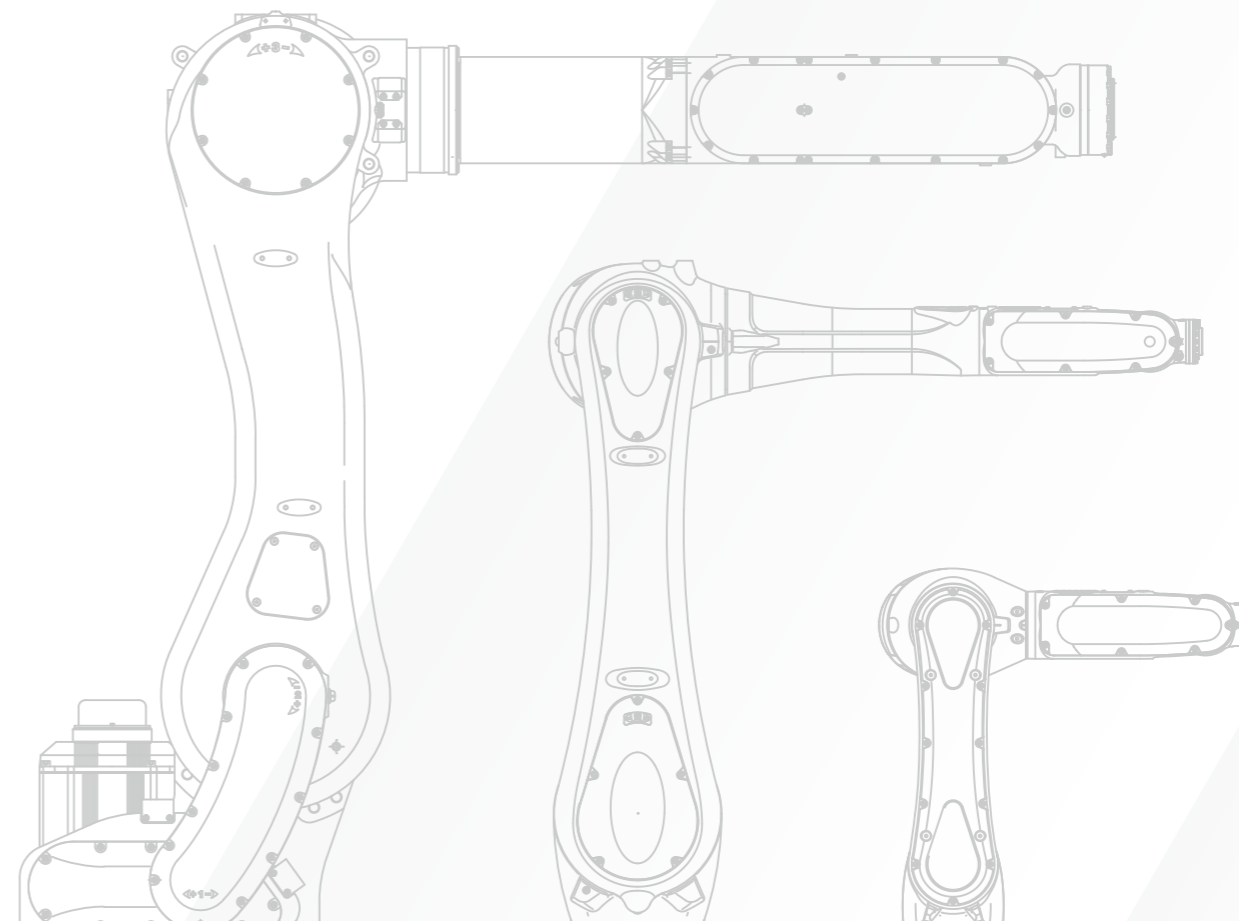
Kawasaki Robotics India Pvt. Ltd.

Plot No. 136, Sector-37, Pace City 1,
Gurgaon, 122101 Haryana, India
Phone: +91-124-437-1845



CAUTIONS TO BE TAKEN TO ENSURE SAFETY

- For those persons involved with the operation / service of your system, including Kawasaki Robot, they must strictly observe all safety regulations at all times. They should carefully read the Manuals and other related safety documents.
- Products described in this catalogue are general industrial robots. Therefore, if a customer wishes to use the Robot for special purposes, which might endanger operators or if the Robot has any problems, please contact us. We will be pleased to help you.
- Be careful as Photographs illustrated in this catalogue are frequently taken after removing safety fences and other safety devices stipulated in the safety regulations from the Robot operation system.



Small-to-medium, general-purpose robots

Kawasaki R series robots are setting the benchmark for all small to medium duty industrial robots. The compact design along with industry leading speed, reach, and work range makes the R series robots ideal for a wide range of applications throughout diverse industries.

RS series



RS003N

RS005N

RS005L



RS006L

RS007N

RS007L



RS010L

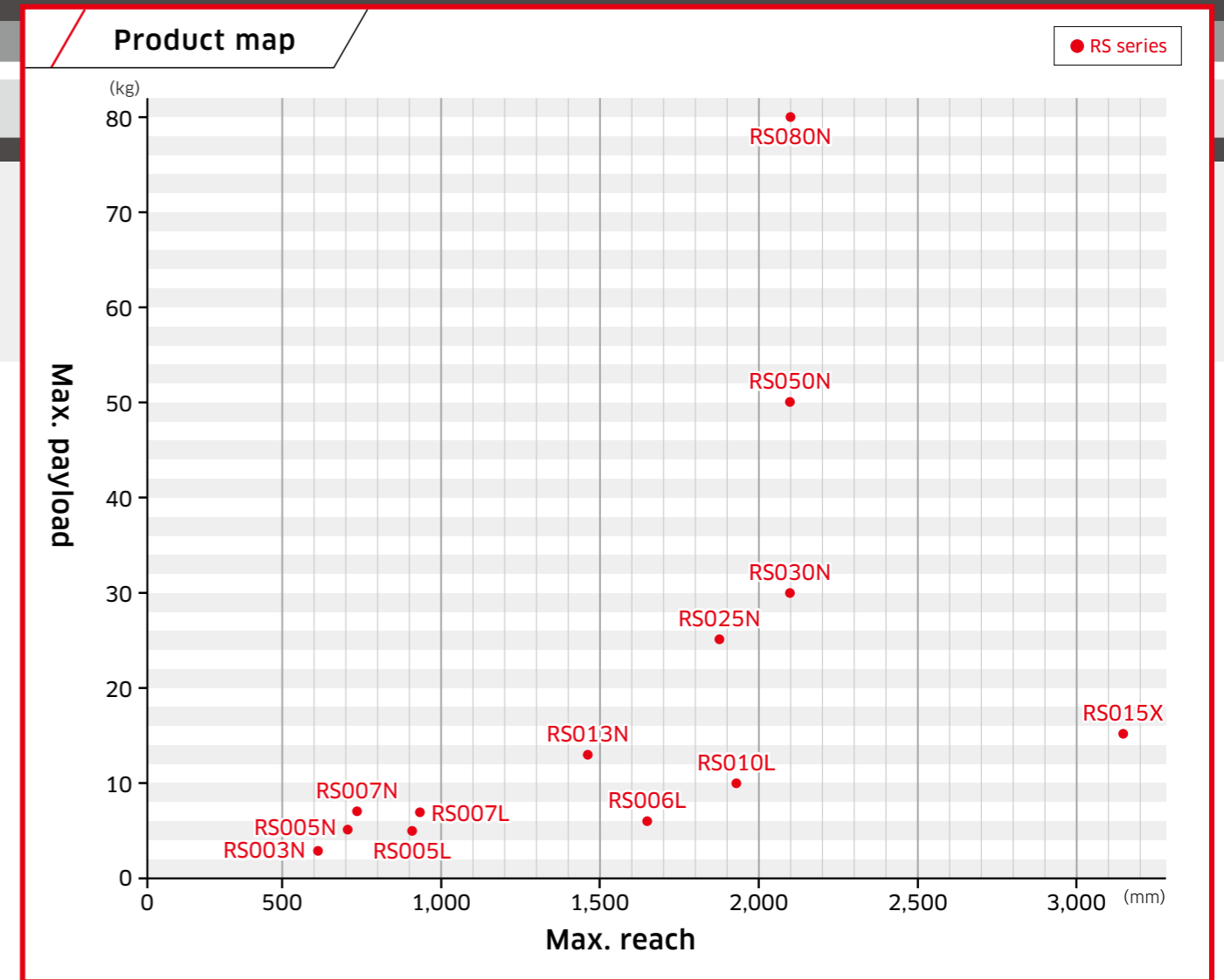
RS013N



RS015X

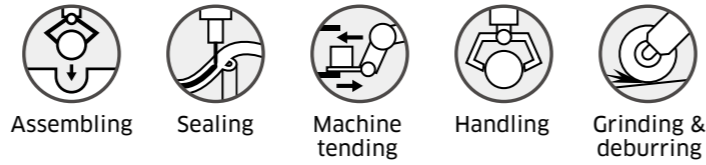
RS025N

RS030N/RS050N/RS080N



RS series

[Applications]



Assembling

Sealing

Machine tending

Handling

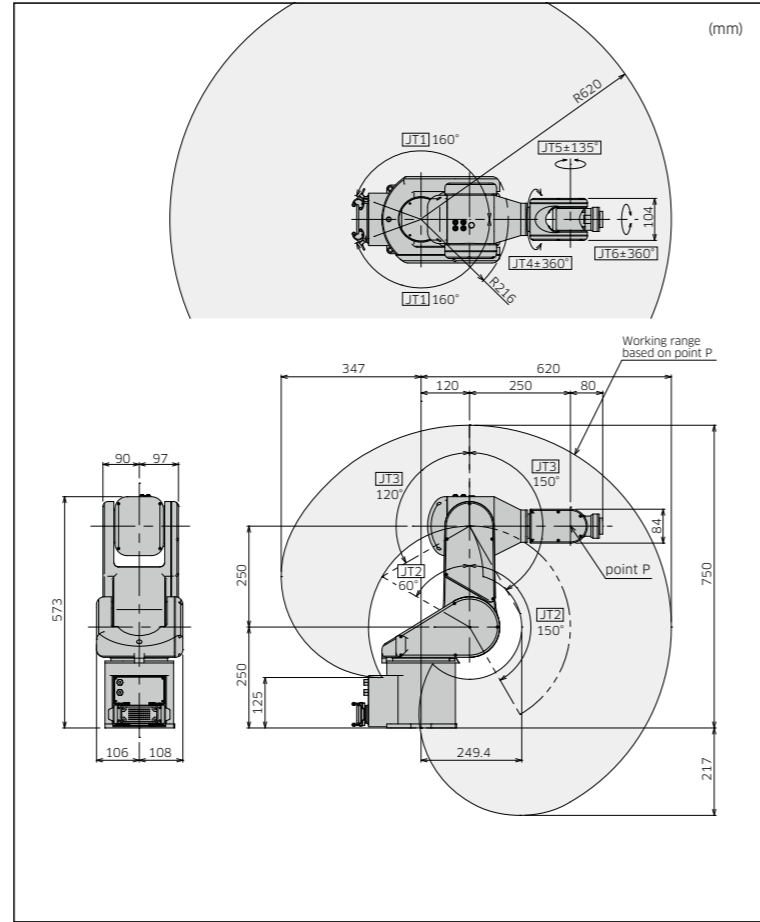
Grinding & deburring

RS003N

Standard Specifications

| | | |
|--|--|-------------------------------------|
| Type | Articulated robot | |
| Degree of freedom (axes) | 6 | |
| Payload (kg) | 3 | |
| Max. reach (mm) | 620 | |
| Position repeatability*1 (mm) | ±0.02 | |
| Motion range (°) | Arm rotation (JT1) | ±160 |
| | Arm out-in (JT2) | +150 - -60 |
| | Arm up-down (JT3) | +120 - -150 |
| | Wrist swivel (JT4) | ±360 |
| | Wrist bend (JT5) | ±135 |
| | Wrist twist (JT6) | ±360 |
| Max. speed (°/s) | Arm rotation (JT1) | 360 |
| | Arm out-in (JT2) | 250 |
| | Arm up-down (JT3) | 225 |
| | Wrist swivel (JT4) | 540 |
| | Wrist bend (JT5) | 225 |
| | Wrist twist (JT6) | 540 |
| Allowable moment (N·m) | Wrist swivel (JT4) | 5.8 |
| | Wrist bend (JT5) | 5.8 |
| | Wrist twist (JT6) | 2.9 |
| Allowable moment of inertia (kg·m ²) | Wrist swivel (JT4) | 0.12 |
| | Wrist bend (JT5) | 0.12 |
| | Wrist twist (JT6) | 0.03 |
| Mass (kg) | 20 | |
| Mounting | Floor, Ceiling | |
| Installation environment | Ambient temperature (°C) | 0 - 45 |
| | Relative humidity (%) | 35 - 85 (No dew, nor frost allowed) |
| Degee of protection | IP54 or equivalent | |
| Cleanliness | Class 6 equivalent ※Not a guaranteed value | |
| Controller/Power requirements | F60/2.0kVA | |

*1: Conforms to ISO9283



Features

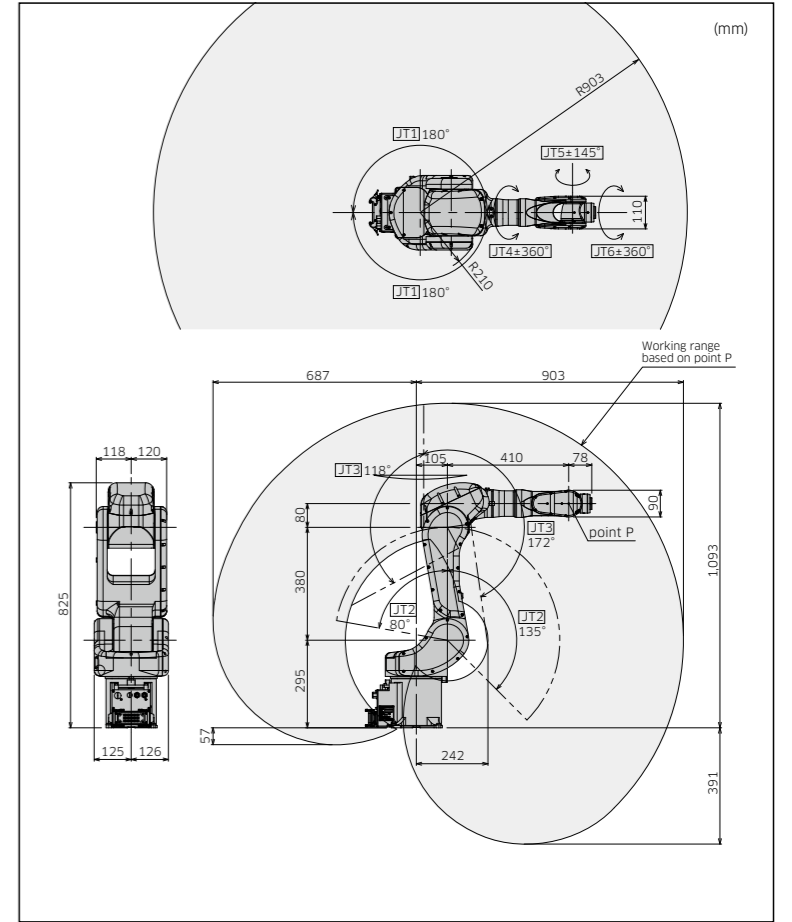
- Full lineup for diverse applications
- Industry leading speed
- Compact, yet wide work range

RS005L

Standard Specifications

| | | |
|--|---|-------------------------------------|
| Type | Articulated robot | |
| Degree of freedom (axes) | 6 | |
| Payload (kg) | 5 | |
| Max. reach (mm) | 903 | |
| Position repeatability*1 (mm) | ±0.03 | |
| Motion range (°) | Arm rotation (JT1) | ±180 |
| | Arm out-in (JT2) | +135 - -80 |
| | Arm up-down (JT3) | +118 - -172 |
| | Wrist swivel (JT4) | ±360 |
| | Wrist bend (JT5) | ±145 |
| | Wrist twist (JT6) | ±360 |
| Max. speed (°/s) | Arm rotation (JT1) | 300 |
| | Arm out-in (JT2) | 300 |
| | Arm up-down (JT3) | 300 |
| | Wrist swivel (JT4) | 460 |
| | Wrist bend (JT5) | 460 |
| | Wrist twist (JT6) | 740 |
| Allowable moment (N·m) | Wrist swivel (JT4) | 12.3 |
| | Wrist bend (JT5) | 12.3 |
| | Wrist twist (JT6) | 7 |
| Allowable moment of inertia (kg·m ²) | Wrist swivel (JT4) | 0.4 |
| | Wrist bend (JT5) | 0.4 |
| | Wrist twist (JT6) | 0.12 |
| Mass (kg) | 37 | |
| Mounting | Floor, Ceiling | |
| Installation environment | Ambient temperature (°C) | 0 - 45 |
| | Relative humidity (%) | 35 - 85 (No dew, nor frost allowed) |
| Degee of protection | Wrist : IP67 or equivalent Base axes : IP65 or equivalent | |
| Cleanliness | Class 6 equivalent ※Not a guaranteed value | |
| Controller/Power requirements | F60/2.0kVA | |

*1: Conforms to ISO9283

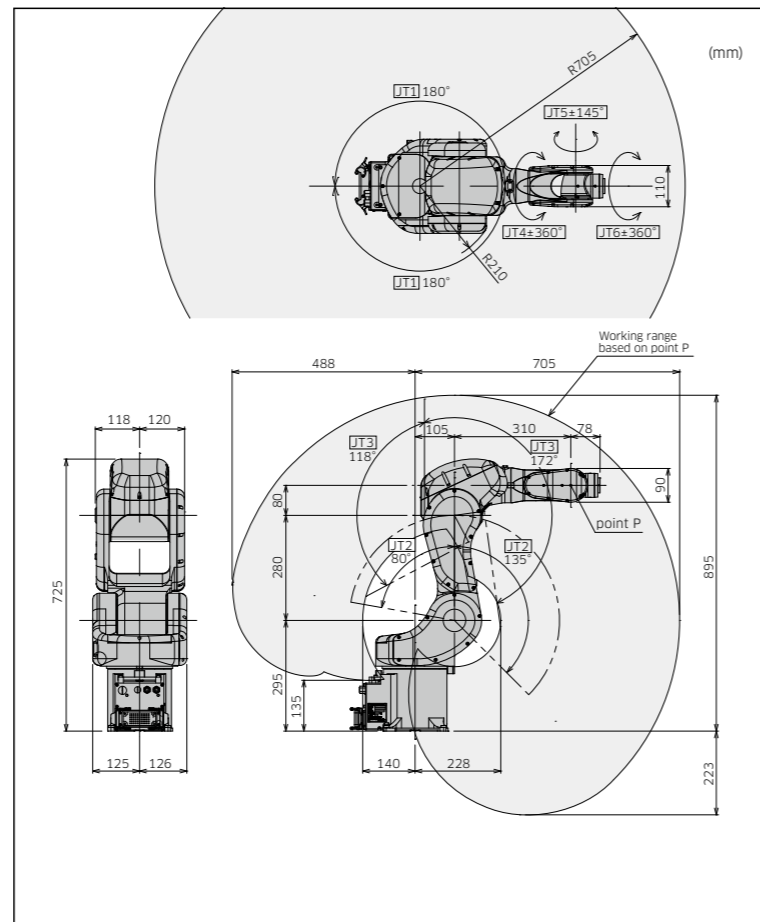


RS005N

Standard Specifications

| | | |
|--|---|-------------------------------------|
| Type | Articulated robot | |
| Degree of freedom (axes) | 6 | |
| Payload (kg) | 5 | |
| Max. reach (mm) | 705 | |
| Position repeatability*1 (mm) | ±0.02 | |
| Motion range (°) | Arm rotation (JT1) | ±180 |
| | Arm out-in (JT2) | +135 - -80 |
| | Arm up-down (JT3) | +118 - -172 |
| | Wrist swivel (JT4) | ±360 |
| | Wrist bend (JT5) | ±145 |
| | Wrist twist (JT6) | ±360 |
| Max. speed (°/s) | Arm rotation (JT1) | 360 |
| | Arm out-in (JT2) | 360 |
| | Arm up-down (JT3) | 410 |
| | Wrist swivel (JT4) | 460 |
| | Wrist bend (JT5) | 460 |
| | Wrist twist (JT6) | 740 |
| Allowable moment (N·m) | Wrist swivel (JT4) | 12.3 |
| | Wrist bend (JT5) | 12.3 |
| | Wrist twist (JT6) | 7 |
| Allowable moment of inertia (kg·m ²) | Wrist swivel (JT4) | 0.4 |
| | Wrist bend (JT5) | 0.4 |
| | Wrist twist (JT6) | 0.12 |
| Mass (kg) | 34 | |
| Mounting | Floor, Ceiling | |
| Installation environment | Ambient temperature (°C) | 0 - 45 |
| | Relative humidity (%) | 35 - 85 (No dew, nor frost allowed) |
| Degee of protection | Wrist : IP67 or equivalent Base axes : IP65 or equivalent | |
| Cleanliness | Class 6 equivalent ※Not a guaranteed value | |
| Controller/Power requirements | F60/2.0kVA | |

*1: Conforms to ISO9283

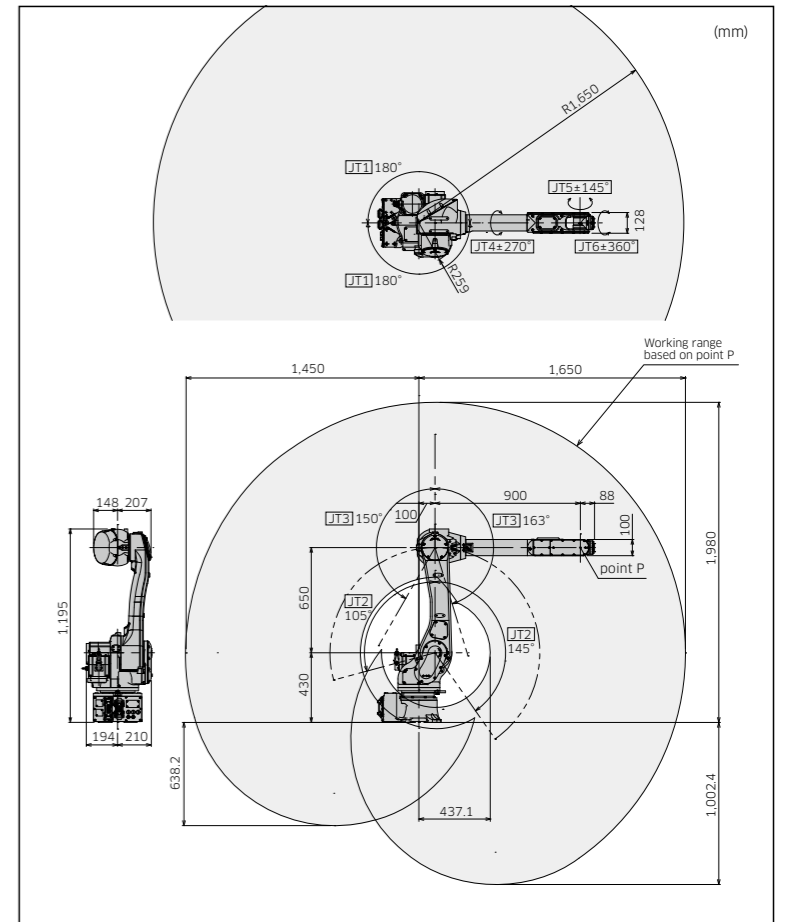


RS006L

Standard Specifications

| | | |
|--|---|-------------------------------------|
| Type | Articulated robot | |
| Degree of freedom (axes) | 6 | |
| Payload (kg) | 6 | |
| Max. reach (mm) | 1,650 | |
| Position repeatability*1 (mm) | ±0.03 | |
| Motion range (°) | Arm rotation (JT1) | ±180 |
| | Arm out-in (JT2) | +145 - -105 |
| | Arm up-down (JT3) | +150 - -163 |
| | Wrist swivel (JT4) | ±270 |
| | Wrist bend (JT5) | ±145 |
| | Wrist twist (JT6) | ±360 |
| Max. speed (°/s) | Arm rotation (JT1) | 250 |
| | Arm out-in (JT2) | 250 |
| | Arm up-down (JT3) | 215 |
| | Wrist swivel (JT4) | 365 |
| | Wrist bend (JT5) | 380 |
| | Wrist twist (JT6) | 700 |
| Allowable moment (N·m) | Wrist swivel (JT4) | 13 |
| | Wrist bend (JT5) | 13 |
| | Wrist twist (JT6) | 7.5 |
| Allowable moment of inertia (kg·m ²) | Wrist swivel (JT4) | 0.45 |
| | Wrist bend (JT5) | 0.45 |
| | Wrist twist (JT6) | 0.14 |
| Mass (kg) | 150 | |
| Mounting | Floor, Ceiling | |
| Installation environment | Ambient temperature (°C) | 0 - 45 |
| | Relative humidity (%) | 35 - 85 (No dew, nor frost allowed) |
| Degee of protection | Wrist : IP67 or equivalent Base axes : IP65 or equivalent | |
| Cleanliness | Class 6 equivalent ※Not a guaranteed value | |
| Controller/Power requirements | F60/2.0kVA, F01/5.6kVA | |

*1: Conforms to ISO9283

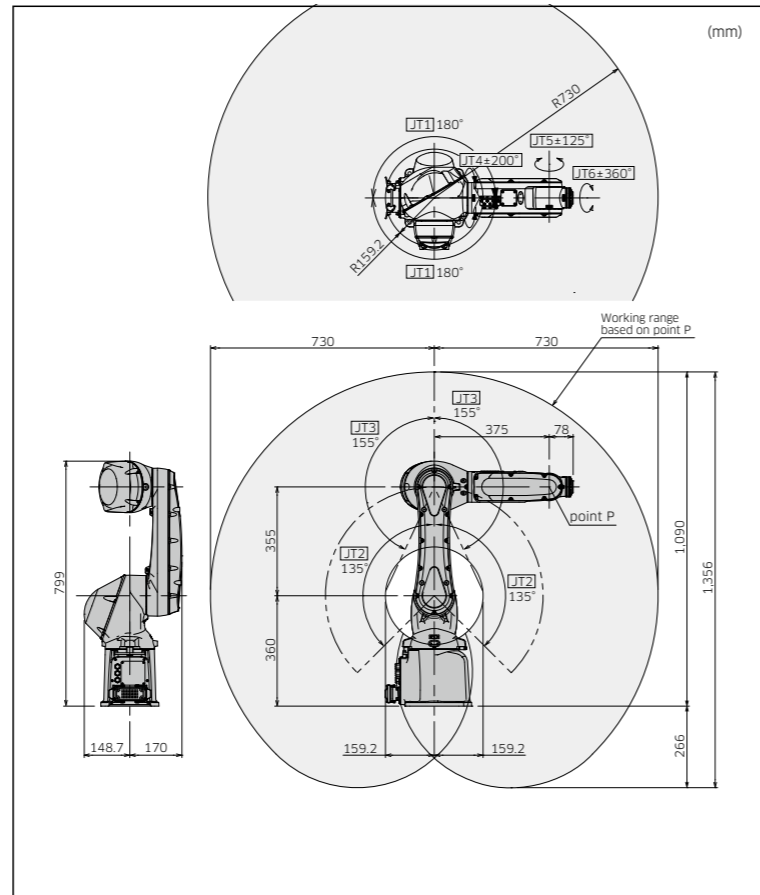


RS007N

Standard Specifications

| | | |
|-------------------------------------|---|-------------------------------------|
| Type | Articulated robot | |
| Degree of freedom (axes) | 6 | |
| Payload (kg) | 7 | |
| Max. reach (mm) | 730 | |
| Position repeatability*1 (mm) | ±0.02 | |
| Motion range (°) | Arm rotation (JT1) | ±180 |
| | Arm out-in (JT2) | ±135 |
| | Arm up-down (JT3) | ±155 |
| | Wrist swivel (JT4) | ±200 |
| | Wrist bend (JT5) | ±125 |
| | Wrist twist (JT6) | ±360 |
| Max. speed (°/s) | Arm rotation (JT1) | 470 |
| | Arm out-in (JT2) | 380 |
| | Arm up-down (JT3) | 520 |
| | Wrist swivel (JT4) | 550 |
| | Wrist bend (JT5) | 550 |
| | Wrist twist (JT6) | 1,000 |
| Allowable moment (N·m) | Wrist swivel (JT4) | 17 |
| | Wrist bend (JT5) | 17 |
| | Wrist twist (JT6) | 10 |
| Allowable moment of inertia (kg·m²) | Wrist swivel (JT4) | 0.5 |
| | Wrist bend (JT5) | 0.5 |
| | Wrist twist (JT6) | 0.2 |
| Mass (kg) | 35 | |
| Mounting | Floor, Ceiling | |
| Installation environment | Ambient temperature (°C) | 0 - 45 |
| | Relative humidity (%) | 35 - 85 (No dew, nor frost allowed) |
| Degee of protection | Wrist : IP67 or equivalent Base axes : IP65 or equivalent | |
| Cleanliness | Class 6 equivalent *Not a guaranteed value | |
| Controller/Power requirements | F60/2.0kVA, F01/5.6kVA | |

*1: Conforms to ISO9283

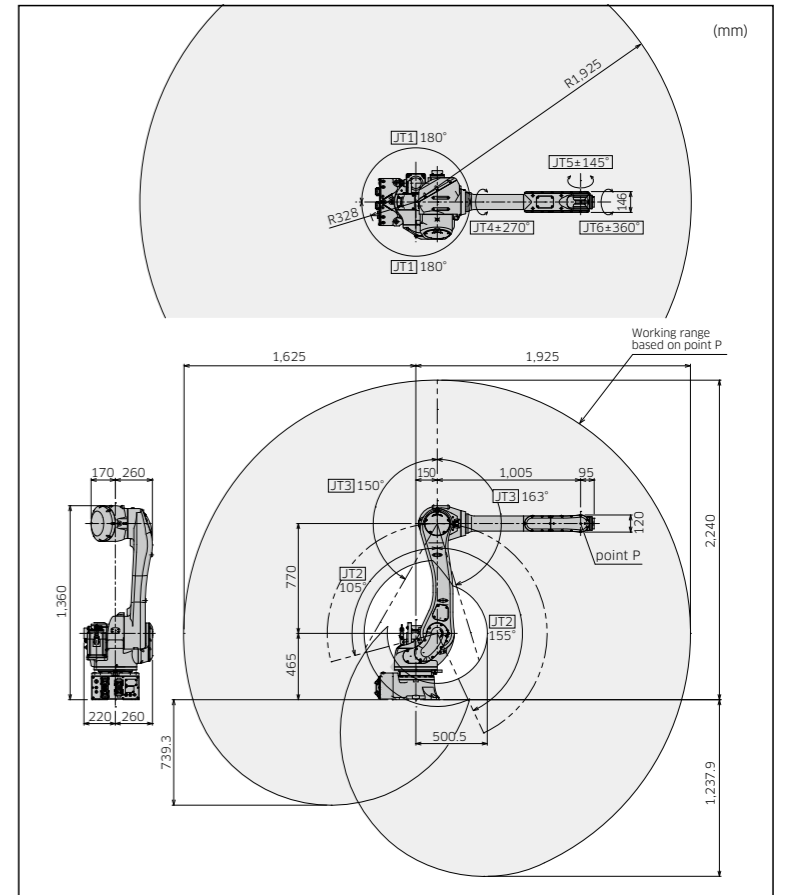


RS010L

Standard Specifications

| | | |
|-------------------------------------|---|-------------------------------------|
| Type | Articulated robot | |
| Degree of freedom (axes) | 6 | |
| Payload (kg) | 10 | |
| Max. reach (mm) | 1,925 | |
| Position repeatability*1 (mm) | ±0.05 | |
| Motion range (°) | Arm rotation (JT1) | ±180 |
| | Arm out-in (JT2) | +155 - -105 |
| | Arm up-down (JT3) | +150 - -163 |
| | Wrist swivel (JT4) | ±270 |
| | Wrist bend (JT5) | ±145 |
| | Wrist twist (JT6) | ±360 |
| Max. speed (°/s) | Arm rotation (JT1) | 190 |
| | Arm out-in (JT2) | 205 |
| | Arm up-down (JT3) | 210 |
| | Wrist swivel (JT4) | 400 |
| | Wrist bend (JT5) | 360 |
| | Wrist twist (JT6) | 610 |
| Allowable moment (N·m) | Wrist swivel (JT4) | 22 |
| | Wrist bend (JT5) | 22 |
| | Wrist twist (JT6) | 10 |
| Allowable moment of inertia (kg·m²) | Wrist swivel (JT4) | 0.7 |
| | Wrist bend (JT5) | 0.7 |
| | Wrist twist (JT6) | 0.2 |
| Mass (kg) | 230 | |
| Mounting | Floor, Ceiling | |
| Installation environment | Ambient temperature (°C) | 0 - 45 |
| | Relative humidity (%) | 35 - 85 (No dew, nor frost allowed) |
| Degee of protection | Wrist : IP67 or equivalent Base axes : IP65 or equivalent | |
| Cleanliness | Class 6 equivalent *Not a guaranteed value | |
| Controller/Power requirements | F01/5.6kVA | |

*1: Conforms to ISO9283

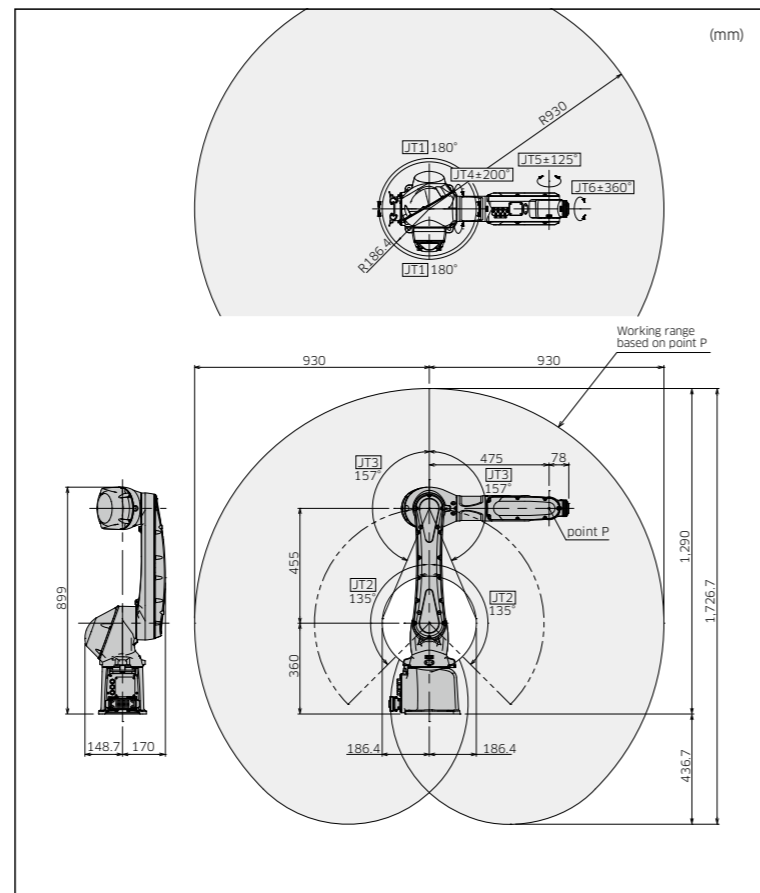


RS007L

Standard Specifications

| | | |
|-------------------------------------|---|-------------------------------------|
| Type | Articulated robot | |
| Degree of freedom (axes) | 6 | |
| Payload (kg) | 7 | |
| Max. reach (mm) | 930 | |
| Position repeatability*1 (mm) | ±0.03 | |
| Motion range (°) | Arm rotation (JT1) | ±180 |
| | Arm out-in (JT2) | ±135 |
| | Arm up-down (JT3) | ±157 |
| | Wrist swivel (JT4) | ±200 |
| | Wrist bend (JT5) | ±125 |
| | Wrist twist (JT6) | ±360 |
| Max. speed (°/s) | Arm rotation (JT1) | 370 |
| | Arm out-in (JT2) | 310 |
| | Arm up-down (JT3) | 410 |
| | Wrist swivel (JT4) | 550 |
| | Wrist bend (JT5) | 550 |
| | Wrist twist (JT6) | 1,000 |
| Allowable moment (N·m) | Wrist swivel (JT4) | 17 |
| | Wrist bend (JT5) | 17 |
| | Wrist twist (JT6) | 10 |
| Allowable moment of inertia (kg·m²) | Wrist swivel (JT4) | 0.5 |
| | Wrist bend (JT5) | 0.5 |
| | Wrist twist (JT6) | 0.2 |
| Mass (kg) | 36 | |
| Mounting | Floor, Ceiling | |
| Installation environment | Ambient temperature (°C) | 0 - 45 |
| | Relative humidity (%) | 35 - 85 (No dew, nor frost allowed) |
| Degee of protection | Wrist : IP67 or equivalent Base axes : IP65 or equivalent | |
| Cleanliness | Class 6 equivalent *Not a guaranteed value | |
| Controller/Power requirements | F60/2.0kVA, F01/5.6kVA | |

*1: Conforms to ISO9283

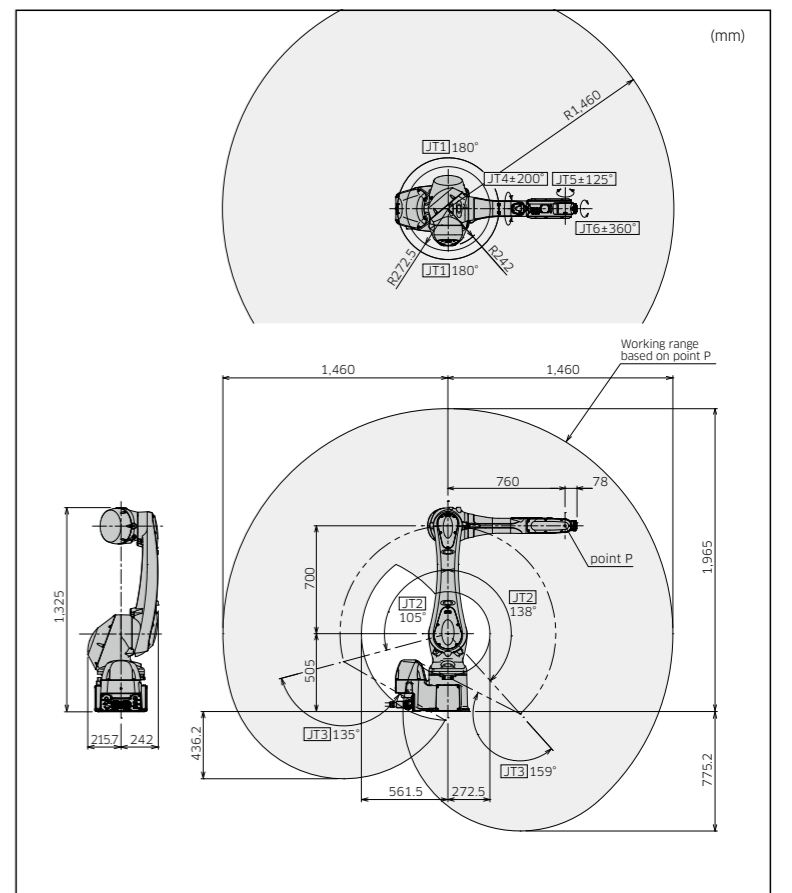


RS013N

Standard Specifications

| | | |
|-------------------------------------|--|-------------------------------------|
| Type | Articulated robot | |
| Degree of freedom (axes) | 6 | |
| Payload (kg) | 13 | |
| Max. reach (mm) | 1,460 | |
| Position repeatability*1 (mm) | ±0.03 | |
| Motion range (°) | Arm rotation (JT1) | ±180 |
| | Arm out-in (JT2) | +138 - -105 |
| | Arm up-down (JT3) | +135 - -159 |
| | Wrist swivel (JT4) | ±200 |
| | Wrist bend (JT5) | ±125 |
| | Wrist twist (JT6) | ±360 |
| Max. speed (°/s) | Arm rotation (JT1) | 265 |
| | Arm out-in (JT2) | 250 |
| | Arm up-down (JT3) | 265 |
| | Wrist swivel (JT4) | 475 |
| | Wrist bend (JT5) | 475 |
| | Wrist twist (JT6) | 730 |
| Allowable moment (N·m) | Wrist swivel (JT4) | 26 |
| | Wrist bend (JT5) | 26 |
| | Wrist twist (JT6) | 10 |
| Allowable moment of inertia (kg·m²) | Wrist swivel (JT4) | 0.9 |
| | Wrist bend (JT5) | 0.9 |
| | Wrist twist (JT6) | 0.3 |
| Mass (kg) | 170 | |
| Mounting | Floor, Ceiling | |
| Installation environment | Ambient temperature (°C) | 0 - 45 |
| | Relative humidity (%) | 35 - 85 (No dew, nor frost allowed) |
| Degee of protection | IP67 or equivalent | |
| Cleanliness | Class 6 equivalent *Not a guaranteed value | |
| Controller/Power requirements | F60/2.0kVA, F01/5.6kVA | |

*1: Conforms to ISO9283

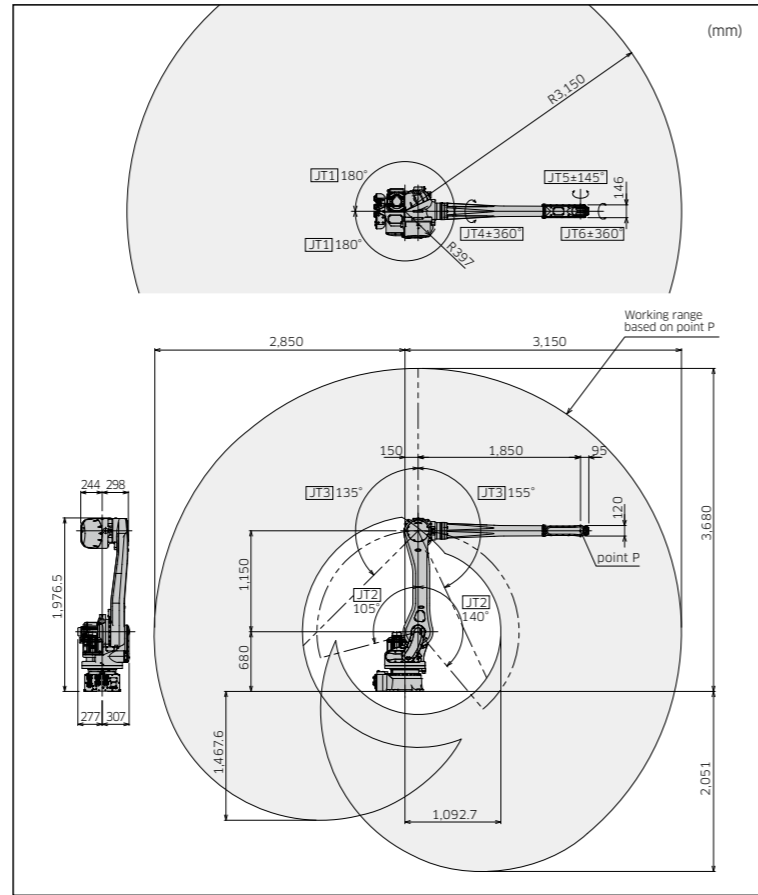


RS015X

Standard Specifications

| | | |
|--|--------------------------|---|
| Type | | Articulated robot |
| Degree of freedom (axes) | | 6 |
| Payload (kg) | | 15 |
| Max. reach (mm) | | 3,150 |
| Position repeatability*1 (mm) | | ±0.06 |
| Motion range (°) | Arm rotation (JT1) | ±180 |
| | Arm out-in (JT2) | +140 - -105 |
| | Arm up-down (JT3) | +135 - -155 |
| | Wrist swivel (JT4) | ±360 |
| | Wrist bend (JT5) | ±145 |
| | Wrist twist (JT6) | ±360 |
| Max. speed (°/s) | Arm rotation (JT1) | 180 |
| | Arm out-in (JT2) | 180 |
| | Arm up-down (JT3) | 200 |
| | Wrist swivel (JT4) | 410 |
| | Wrist bend (JT5) | 360 |
| | Wrist twist (JT6) | 610 |
| Allowable moment (N·m) | Wrist swivel (JT4) | 34 |
| | Wrist bend (JT5) | 34 |
| | Wrist twist (JT6) | 22 |
| Allowable moment of inertia (kg·m ²) | Wrist swivel (JT4) | 0.8 |
| | Wrist bend (JT5) | 0.8 |
| | Wrist twist (JT6) | 0.25 |
| Mass (kg) | | 545 |
| Mounting | | Floor, Ceiling |
| Installation environment | Ambient temperature (°C) | 0 - 45 |
| | Relative humidity (%) | 35 - 85 (No dew, nor frost allowed) |
| Degree of protection | | Wrist : IP67 or equivalent Base axes : IP65 or equivalent |
| Cleanliness | | Class 6 equivalent ※Not a guaranteed value |
| Controller/Power requirements | | F02/7.5kVA |

*1: Conforms to ISO9283

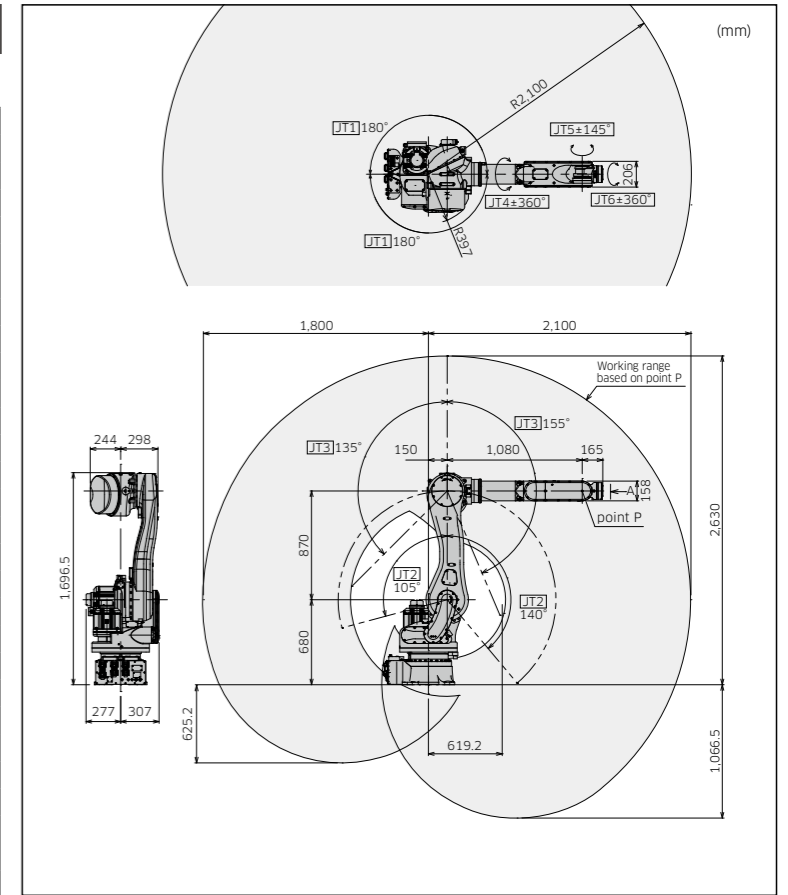


RS030N/RS050N/RS080N

Standard Specifications

| | | |
|--|--------------------------|---|
| Type | | Articulated robot |
| Degree of freedom (axes) | | 6 |
| Payload (kg) | | 30/50/80 |
| Max. reach (mm) | | 2,100 |
| Position repeatability*1 (mm) | | ±0.06 |
| Motion range (°) | Arm rotation (JT1) | ±180 |
| | Arm out-in (JT2) | +140 - -105 |
| | Arm up-down (JT3) | +135 - -155 |
| | Wrist swivel (JT4) | ±360 |
| | Wrist bend (JT5) | ±145 |
| | Wrist twist (JT6) | ±360 |
| Max. speed (°/s) | Arm rotation (JT1) | 180 |
| | Arm out-in (JT2) | 180 |
| | Arm up-down (JT3) | 185/185/160 |
| | Wrist swivel (JT4) | 260/260/185 |
| | Wrist bend (JT5) | 260/260/165 |
| | Wrist twist (JT6) | 360/360/280 |
| Allowable moment (N·m) | Wrist swivel (JT4) | 210/210/336 |
| | Wrist bend (JT5) | 210/210/336 |
| | Wrist twist (JT6) | 130/130/194 |
| Allowable moment of inertia (kg·m ²) | Wrist swivel (JT4) | 16.8/28/34 |
| | Wrist bend (JT5) | 16.8/28/34 |
| | Wrist twist (JT6) | 6.6/11/13.7 |
| Mass (kg) | | 555 |
| Mounting | | Floor, Ceiling |
| Installation environment | Ambient temperature (°C) | 0 - 45 |
| | Relative humidity (%) | 35 - 85 (No dew, nor frost allowed) |
| Degree of protection | | Wrist : IP67 or equivalent Base axes : IP65 or equivalent |
| Cleanliness | | Class 6 equivalent ※Not a guaranteed value |
| Controller/Power requirements | | F02/7.5kVA |

*1: Conforms to ISO9283

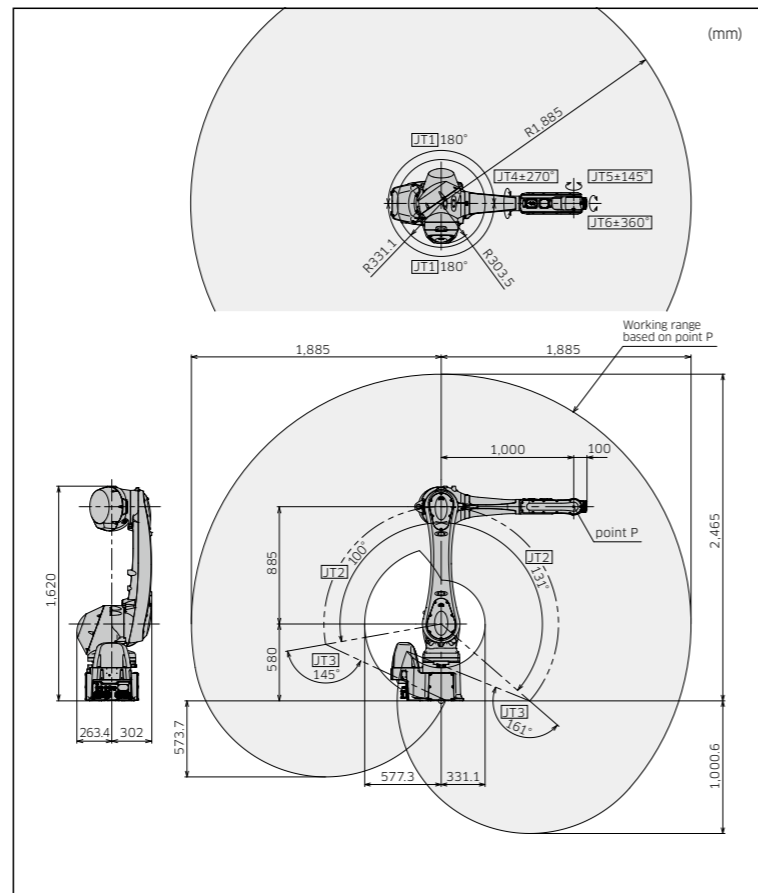


RS025N

Standard Specifications

| | | |
|--|--------------------------|--|
| Type | | Articulated robot |
| Degree of freedom (axes) | | 6 |
| Payload (kg) | | 25 |
| Max. reach (mm) | | 1,885 |
| Position repeatability*1 (mm) | | ±0.04 |
| Motion range (°) | Arm rotation (JT1) | ±180 |
| | Arm out-in (JT2) | +131 - -100 |
| | Arm up-down (JT3) | +145 - -161 |
| | Wrist swivel (JT4) | ±270 |
| | Wrist bend (JT5) | ±145 |
| | Wrist twist (JT6) | ±360 |
| Max. speed (°/s) | Arm rotation (JT1) | 215 |
| | Arm out-in (JT2) | 215 |
| | Arm up-down (JT3) | 270 |
| | Wrist swivel (JT4) | 420 |
| | Wrist bend (JT5) | 420 |
| | Wrist twist (JT6) | 780 |
| Allowable moment (N·m) | Wrist swivel (JT4) | 60 |
| | Wrist bend (JT5) | 60 |
| | Wrist twist (JT6) | 32 |
| Allowable moment of inertia (kg·m ²) | Wrist swivel (JT4) | 2.6 |
| | Wrist bend (JT5) | 2.6 |
| | Wrist twist (JT6) | 1.3 |
| Mass (kg) | | 270 |
| Mounting | | Floor |
| Installation environment | Ambient temperature (°C) | 0 - 45 |
| | Relative humidity (%) | 35 - 85 (No dew, nor frost allowed) |
| Degree of protection | | IP67 or equivalent |
| Cleanliness | | Class 6 equivalent ※Not a guaranteed value |
| Controller/Power requirements | | F02/7.5kVA |

*1: Conforms to ISO9283



F60

Features

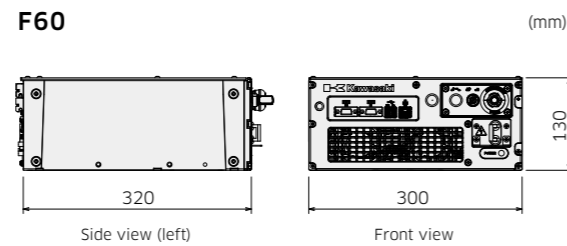
- Universal controller has common specifications to be used worldwide.
- Drastic downsizing has achieved very compact dimensions and light weight (8.3kg). It is easy for a person to carry the controller.



Standard Specifications

| | | |
|--------------------------|---|-------------------------------------|
| Dimensions (mm) | W300×D320×H130 | |
| Type | Open type indirect cooling system (IP20 or equivalent) | |
| Controlled (axes) | 6 | |
| Memory capacity (MB) | 16 | |
| I/O signals | External operation | Motor power off, Hold |
| | Input (Channels) | 16 |
| | Output (Channels) | 16 |
| Cable length | Teach pendant (m) | 5 |
| | Robot-controller (m) | 5 |
| Mass (kg) | 8.3 | |
| Power requirements | AC200 - AC230V ±10%, 50/60Hz, 1Φ | |
| | Max. 2.0kVA | |
| Installation environment | Ambient temperature (°C) | 0 - 45 |
| | Relative humidity (%) | 35 - 85 (No dew, nor frost allowed) |
| Teach pendant | TFT color LCD display with touch-panel, E-Stop switch, Teach lock switch, Enable switch | |
| Operation panel | E-stop switch, teach/repeat switch | |

External view and dimensions



F01/F02

Features

- Dimensions and weight have been reduced from its previous E-controller.
- This universal controller has common specifications that can be used globally. (An optional transformer unit is necessary in the region where the power supply and safety standard differ.)

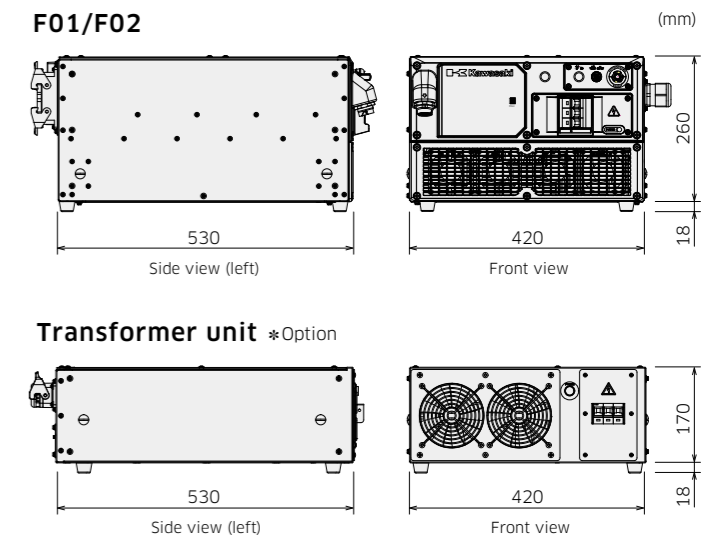


Standard Specifications

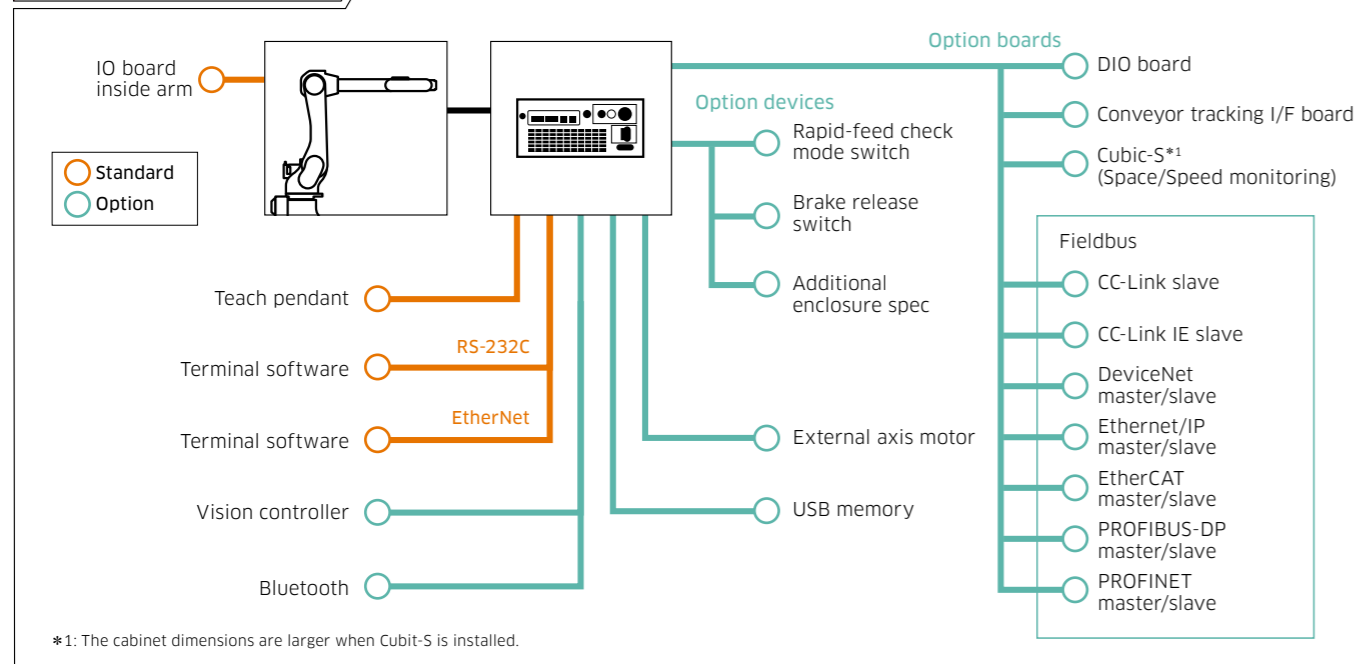
| | | F01 | F02 |
|--------------------------|---|---|-------------|
| Dimensions (mm) | | W420×D530×H278 | |
| Type | | Enclosed type, indirect cooling system (IP54 or equivalent) | |
| Controlled (axes) | | 7 | |
| Memory capacity (MB) | | 16 | |
| I/O signals | External operation | Motor power off, Hold | |
| | Input (Channels) | 32 | |
| | Output (Channels) | 32 | |
| Cable length | Teach pendant (m) | 5 | |
| | Robot-controller (m) | 5 | |
| Mass (kg) | 20 | 25 | |
| Power requirements | AC200V - AC220V ±10%, 50/60Hz, 3Φ | | |
| | AC200V - AC230V ±10%, 50/60Hz, 1Φ*1 | | |
| | | Max. 5.6kVA | Max. 7.5kVA |
| Installation environment | Ambient temperature (°C) | 0 - 45 | |
| | Relative humidity (%) | 35 - 85 (No dew, nor frost allowed) | |
| Teach pendant | Color LCD display with touch-panel, E-Stop switch, Teach lock switch, Enable switch | | |
| Operation panel | E-stop switch, teach/repeat switch | | |

*1: 200V single phase is available for some robot models only.

External view and dimensions



System configuration



System configuration

