



Standard Specifications

CP700L-A

1st ed. 22-Oct-20

Kawasaki Heavy Industries, Ltd.
Robot Business Division

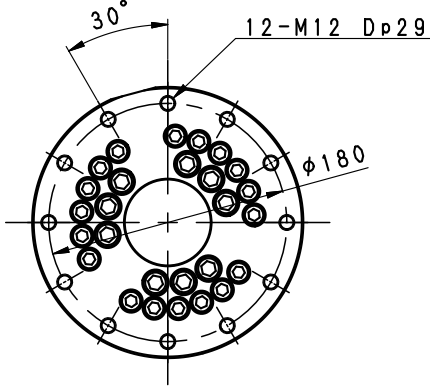
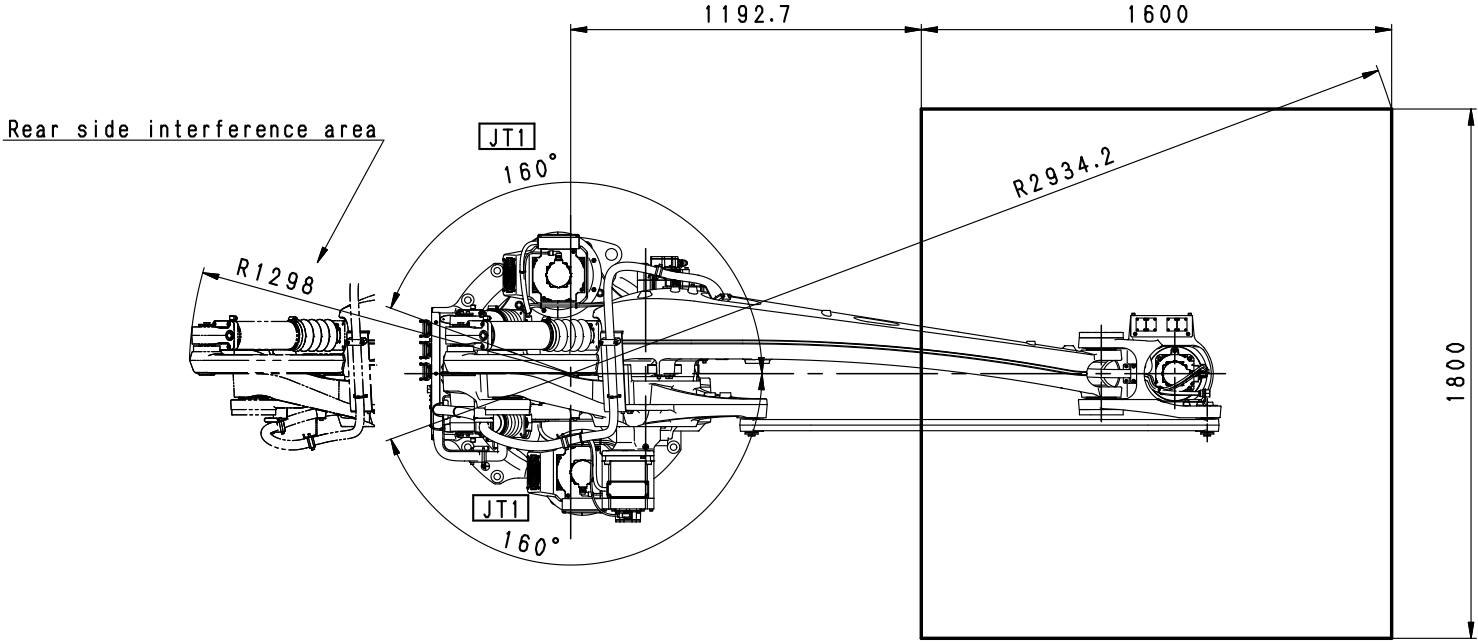
Specification number : 90151-0332DEA

Materials and specifications are subject to change without notice.

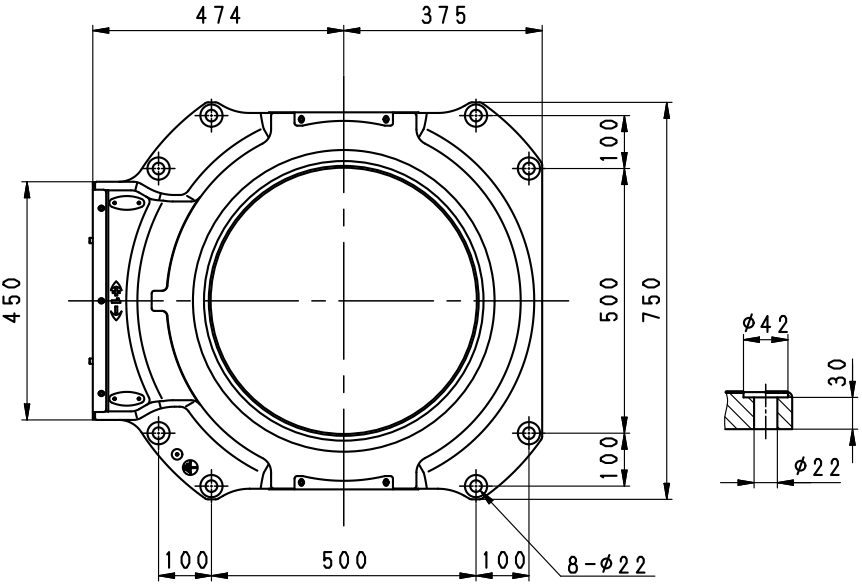
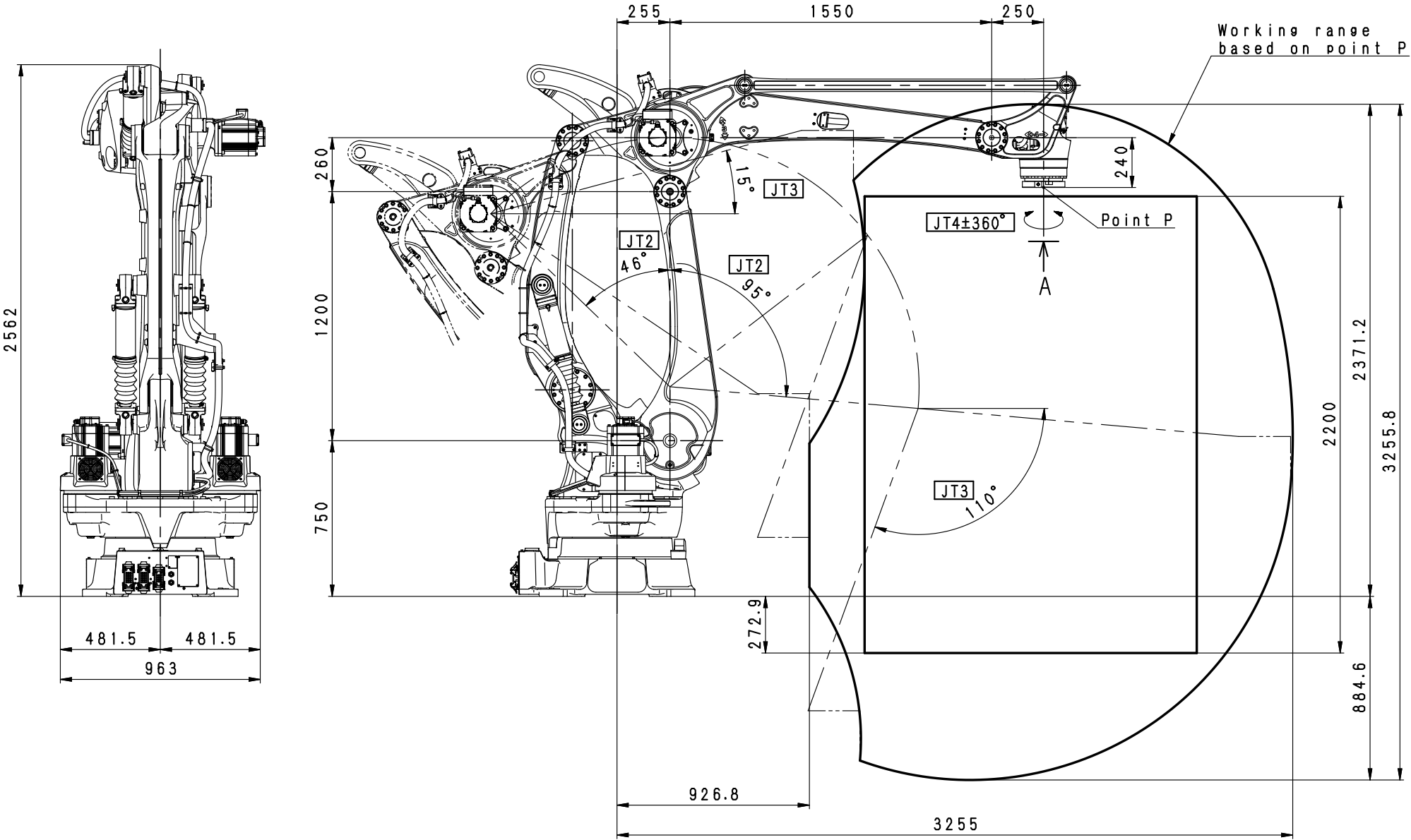
Robot specifications

1. Model	CP700L-A																
2. Type	Articulated robot																
3. Degree of freedom	4 axes																
4. Max. payload	700 kg																
5. Max. reach	3,255 mm																
6. Palletizing Capacity	Approx. 900 cycles/h																
Condition	up-down 400 mm, right-left 2,000 mm																
7. Position repeatability	±0.5 mm (wrist flange surface) conforms to ISO 9283																
8. Axis specification	<table border="1"> <thead> <tr> <th>Operating axis</th><th>Motion range</th><th>Max. speed</th></tr> </thead> <tbody> <tr> <td>Arm rotation (JT1)</td><td>±160°</td><td>75°/s</td></tr> <tr> <td>Arm out-in (JT2)</td><td>+ 95° - - 46°</td><td>65°/s</td></tr> <tr> <td>Arm up-down (JT3)</td><td>+ 15° - - 110°</td><td>65°/s</td></tr> <tr> <td>Wrist twist (JT4)</td><td>±360°</td><td>170°/s</td></tr> </tbody> </table>		Operating axis	Motion range	Max. speed	Arm rotation (JT1)	±160°	75°/s	Arm out-in (JT2)	+ 95° - - 46°	65°/s	Arm up-down (JT3)	+ 15° - - 110°	65°/s	Wrist twist (JT4)	±360°	170°/s
Operating axis	Motion range	Max. speed															
Arm rotation (JT1)	±160°	75°/s															
Arm out-in (JT2)	+ 95° - - 46°	65°/s															
Arm up-down (JT3)	+ 15° - - 110°	65°/s															
Wrist twist (JT4)	±360°	170°/s															
9. Load capacity of wrist	<table border="1"> <thead> <tr> <th></th><th>Max. torque</th><th>Moment of inertia*</th></tr> </thead> <tbody> <tr> <td>JT4</td><td>—</td><td>500 kg·m²</td></tr> </tbody> </table> <p>Note*2 Value in this table shows allowable moment of inertia of JT4 when max. allowed torque is applied to the axis. If more detailed data is required for your application, please contact Kawasaki.</p>			Max. torque	Moment of inertia*	JT4	—	500 kg·m ²									
	Max. torque	Moment of inertia*															
JT4	—	500 kg·m ²															
10. Mass	1,650 kg (without options)																
11. Mounting	Floor mounting																
12. Installation Environment	Ambient Temperature: 0 - 45 °C Relative Humidity: 35 - 85 % (with no dew condensation)																
13. Color	Munsell 10GY9/1 equivalent																
14. Built-in utilities	Air tube to operate the hand (φ12 × 2 line)																
15. Options	Mechanical Stopper	Adjustable stopper JT1															
	Valve harness	8 point															
	Sensor harness	12 point															
	Fork Pocket																
	Air cleaning equipment																

Consult Kawasaki about maintenance parts and spare parts.



VIEW A



Installation Dimensions

CP700L-A
WORKING RANGE