



Standard Specifications

YF003N-A

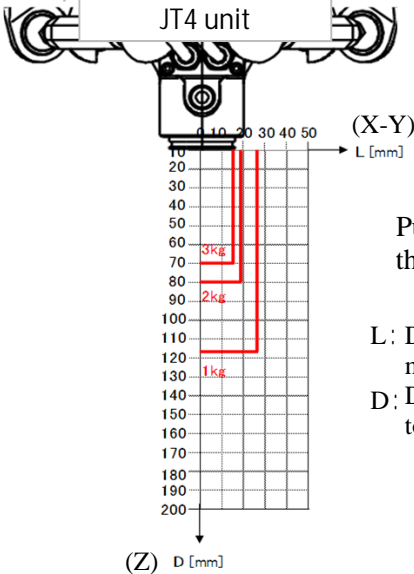
1st ed. 16-Dec-20

Kawasaki Heavy Industries, Ltd.
Robot Business Division

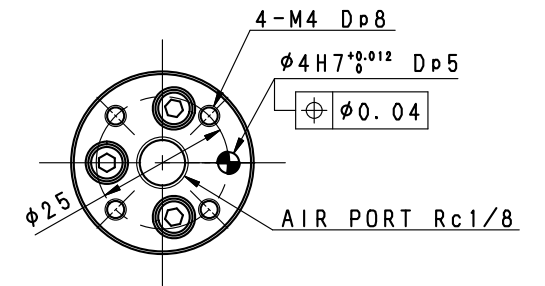
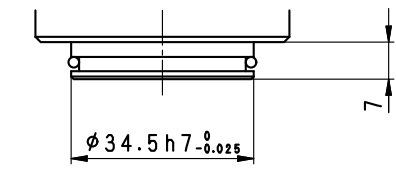
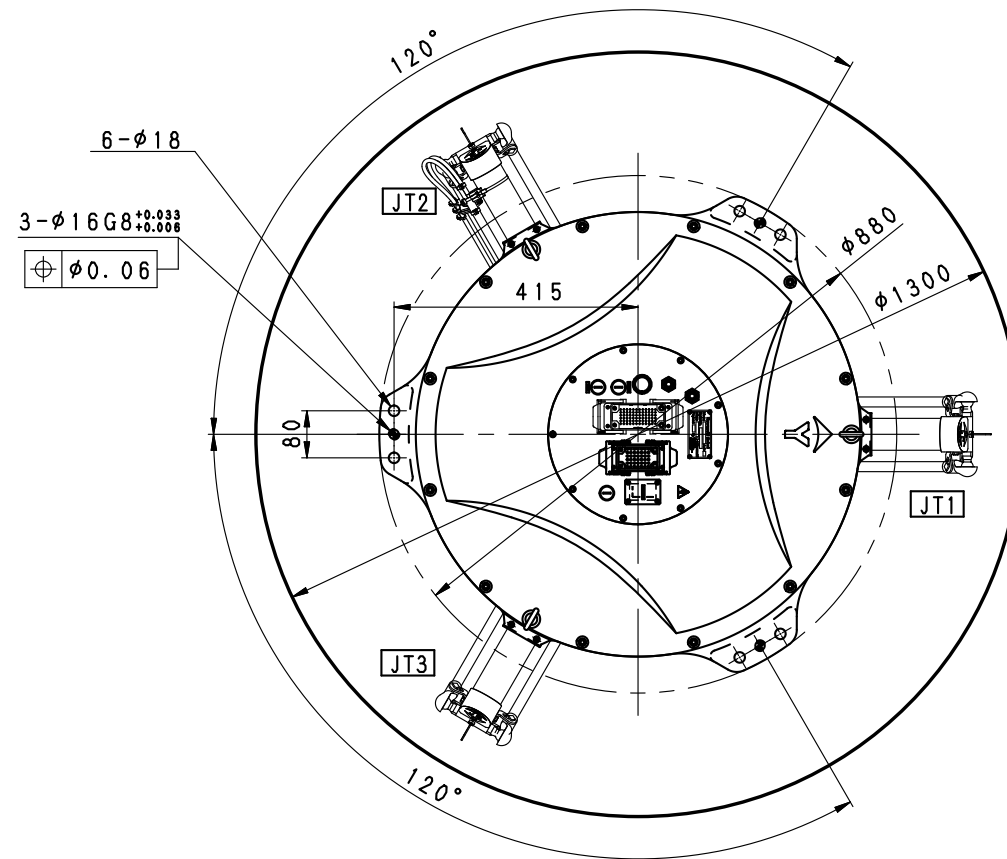
Specification number : 90151-0333DEA

Materials and specifications are subject to change without notice.

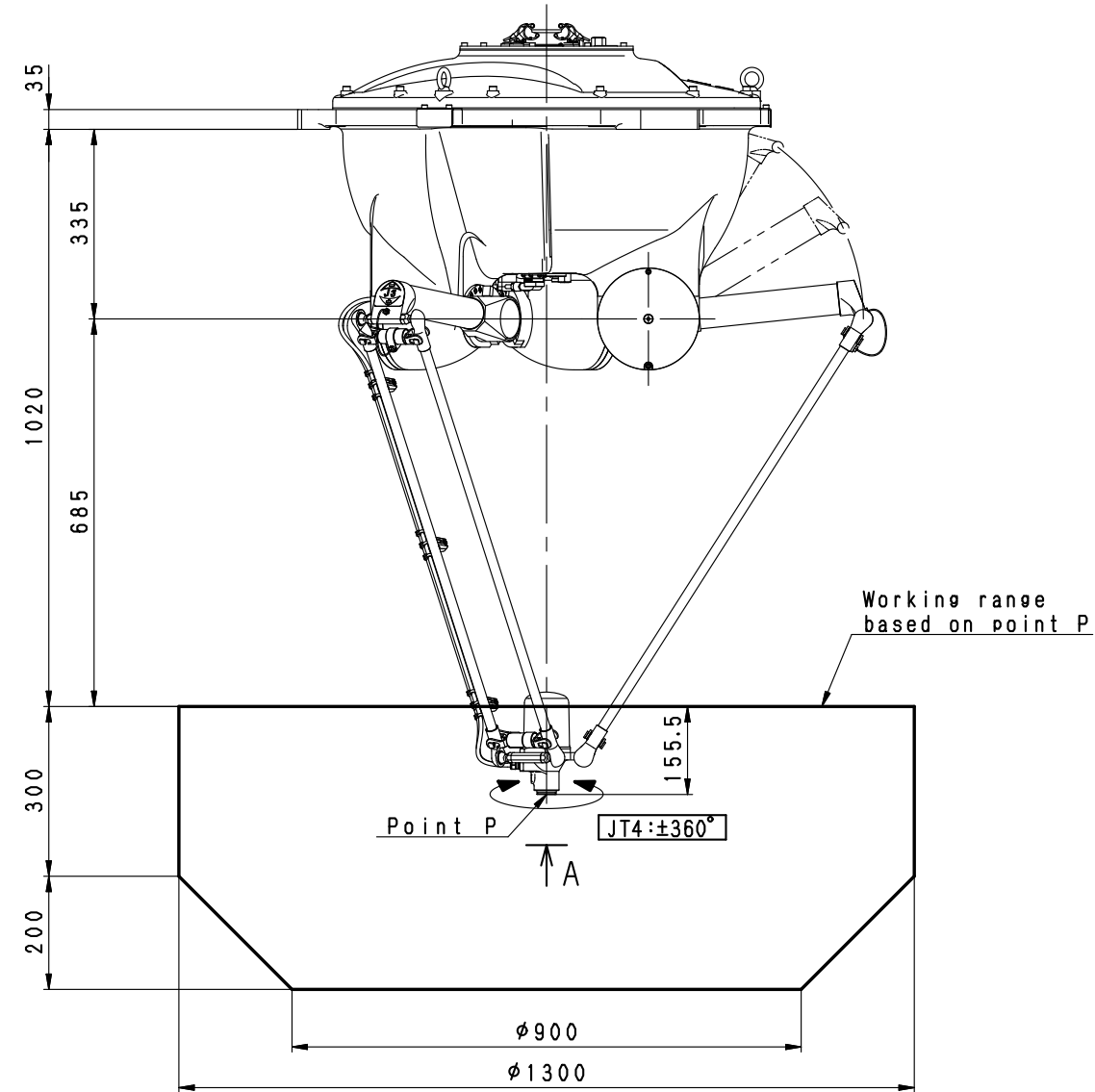
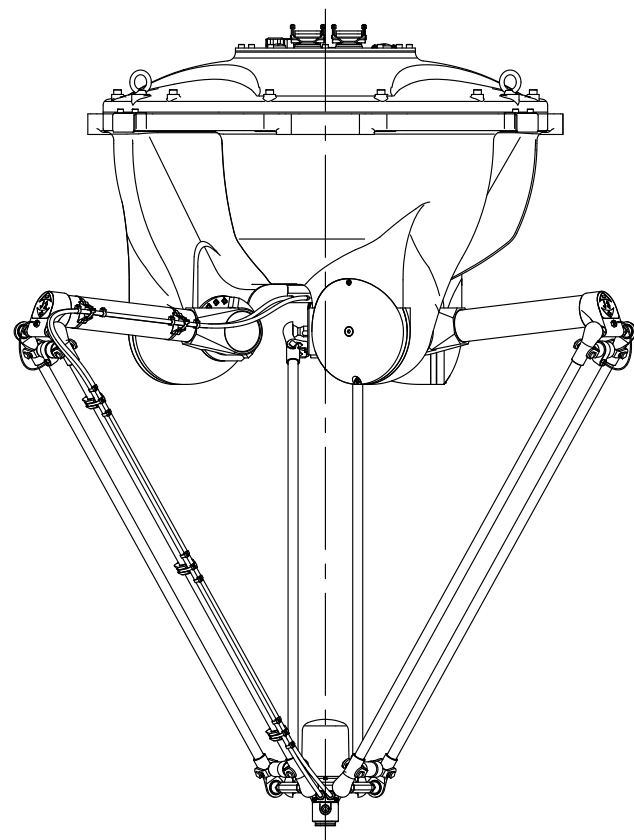
Robot specifications

1. Model	YF003N-A																
2. Type	Delta Parallel Robot																
3. Degree of freedom	4 axes																
4. Max. payload	3 kg																
5. Motion range	φ1,300 x H500 mm																
6. Position repeatability	±0.10 mm conforms to ISO 9283																
7. Angular repeatability	±0.10 °																
8. Axis specification	<table border="1"> <thead> <tr> <th>Operating axis</th> <th>Motion range</th> <th>Max. speed</th> </tr> </thead> <tbody> <tr> <td>Arm rotation 1 (JT1)</td> <td>+ 95 ° - - 52.5 °</td> <td>1090.9 ° /s</td> </tr> <tr> <td>Arm rotation 2 (JT2)</td> <td>+ 95 ° - - 52.5 °</td> <td>1090.9 ° /s</td> </tr> <tr> <td>Arm rotation 3 (JT3)</td> <td>+ 95 ° - - 52.5 °</td> <td>1090.9 ° /s</td> </tr> <tr> <td>Wrist twist (JT4)</td> <td>±360 °</td> <td>1714.3 ° /s</td> </tr> </tbody> </table>		Operating axis	Motion range	Max. speed	Arm rotation 1 (JT1)	+ 95 ° - - 52.5 °	1090.9 ° /s	Arm rotation 2 (JT2)	+ 95 ° - - 52.5 °	1090.9 ° /s	Arm rotation 3 (JT3)	+ 95 ° - - 52.5 °	1090.9 ° /s	Wrist twist (JT4)	±360 °	1714.3 ° /s
Operating axis	Motion range	Max. speed															
Arm rotation 1 (JT1)	+ 95 ° - - 52.5 °	1090.9 ° /s															
Arm rotation 2 (JT2)	+ 95 ° - - 52.5 °	1090.9 ° /s															
Arm rotation 3 (JT3)	+ 95 ° - - 52.5 °	1090.9 ° /s															
Wrist twist (JT4)	±360 °	1714.3 ° /s															
9. Cycle time (Payload)	0.27 s (1 kg), 0.45 s (3 kg) *Motion pattern (25mm up, 305mm horizontal, 25mm down in a to-and-fro motion)																
10. Load capacity of wrist	<div style="display: flex; align-items: flex-start;">  <table border="1" style="margin-left: 20px;"> <thead> <tr> <th>Load</th> <th>Max. Torque</th> <th>Max. Moment</th> </tr> <tr> <th>[-]</th> <th>[Nm]</th> <th>[Nm]</th> </tr> </thead> <tbody> <tr> <td>1kg</td> <td>0.25</td> <td>1.15</td> </tr> <tr> <td>2kg</td> <td>0.37</td> <td>1.57</td> </tr> <tr> <td>3kg</td> <td>0.50</td> <td>2.06</td> </tr> </tbody> </table> <div style="margin-left: 20px;"> <p>Put the center of mass inside of the line of the each load capacity.</p> <p>L: Distance in X-Y dimension from Z-axis to the mass center of gravity of the load. D: Distance in Z dimension from X-Y dimension to the mass center of gravity of the load.</p> </div> </div>		Load	Max. Torque	Max. Moment	[-]	[Nm]	[Nm]	1kg	0.25	1.15	2kg	0.37	1.57	3kg	0.50	2.06
Load	Max. Torque	Max. Moment															
[-]	[Nm]	[Nm]															
1kg	0.25	1.15															
2kg	0.37	1.57															
3kg	0.50	2.06															
11. Mass	145 kg (without options)																
12. Mounting	Ceiling mounting																
13. Installation Environment	Ambient Temperature: 0 - 45 °C																
	Relative Humidity: 35 - 85 % (with no dew condensation)																
14. Color	Munsell 10GY9/1 equivalent																
15. Degree of protection	IP65 equivalent																
16. Built-in utilities	Pneumatic piping (φ10 x 1 line)																
17. Options	Additional axis	5 Axis (Brakeless)															
	Degree of protection	IP67 equivalent															

Consult Kawasaki about maintenance parts and spare parts.



VIEW A



YF003N-A
WORKING RANGE