



Standard Specifications

BA013N-A

1st ed. 03-Mar-22
2nd ed. 12-Jun-23
3rd ed. 24-Apr-24
4th ed. 19-Dec-25

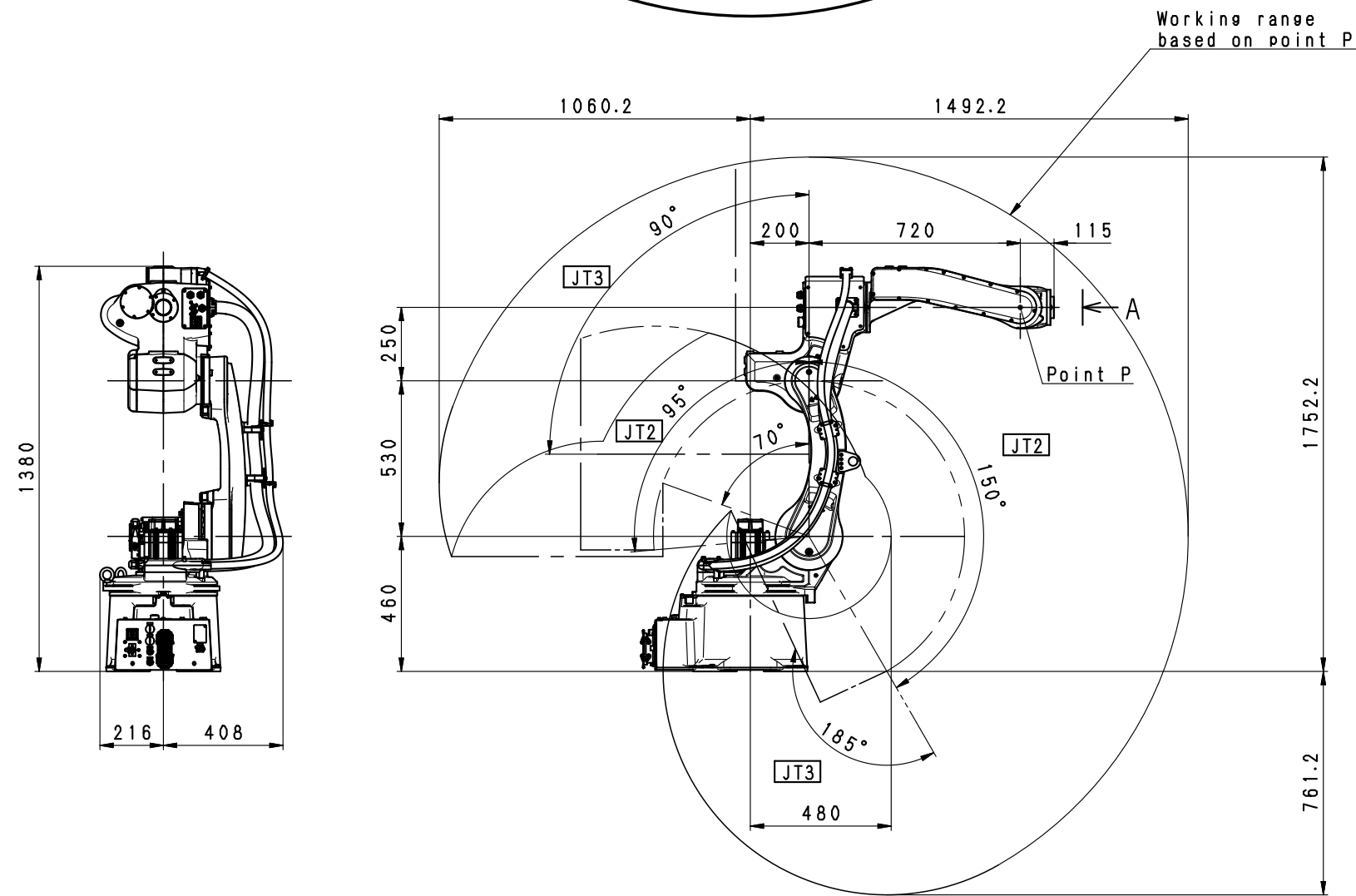
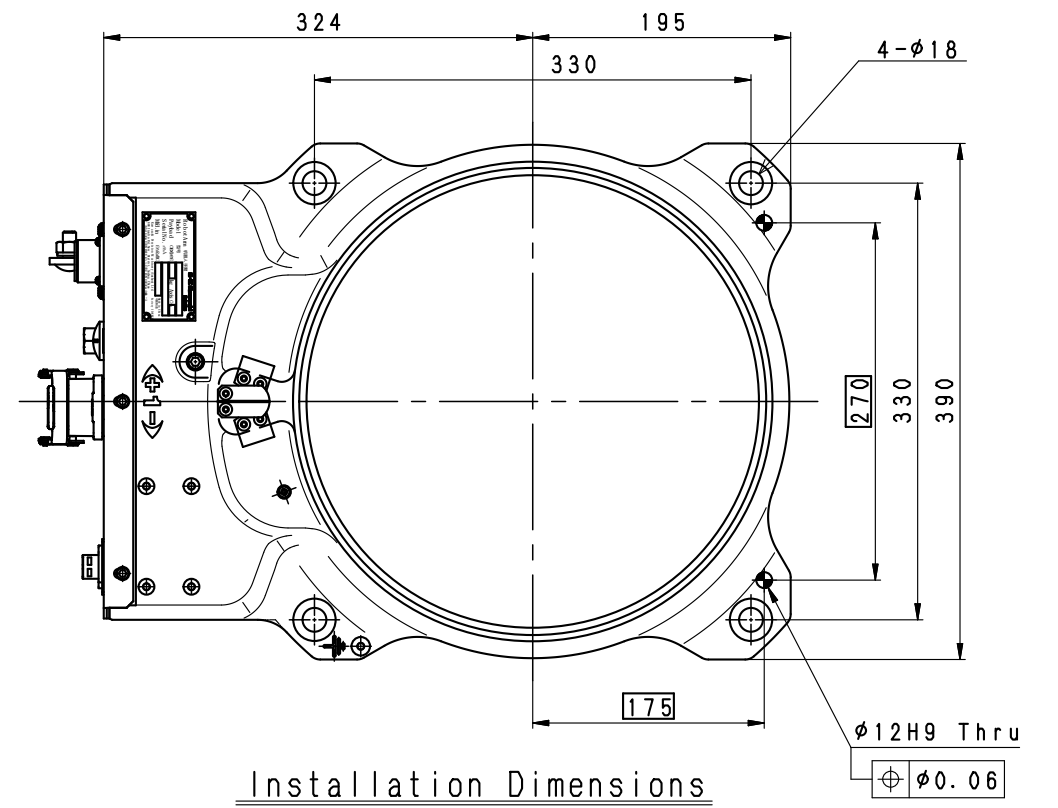
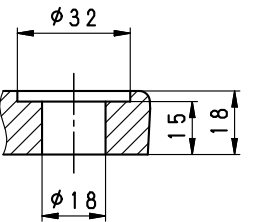
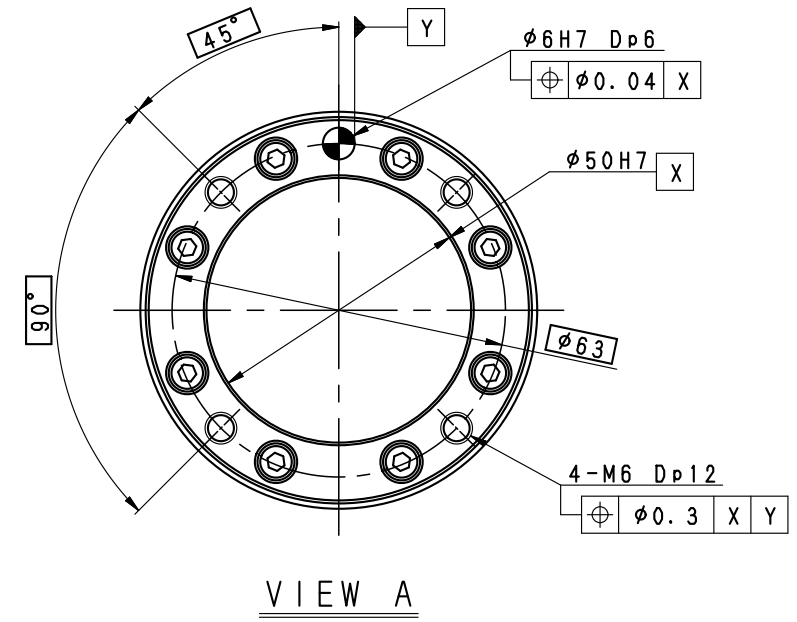
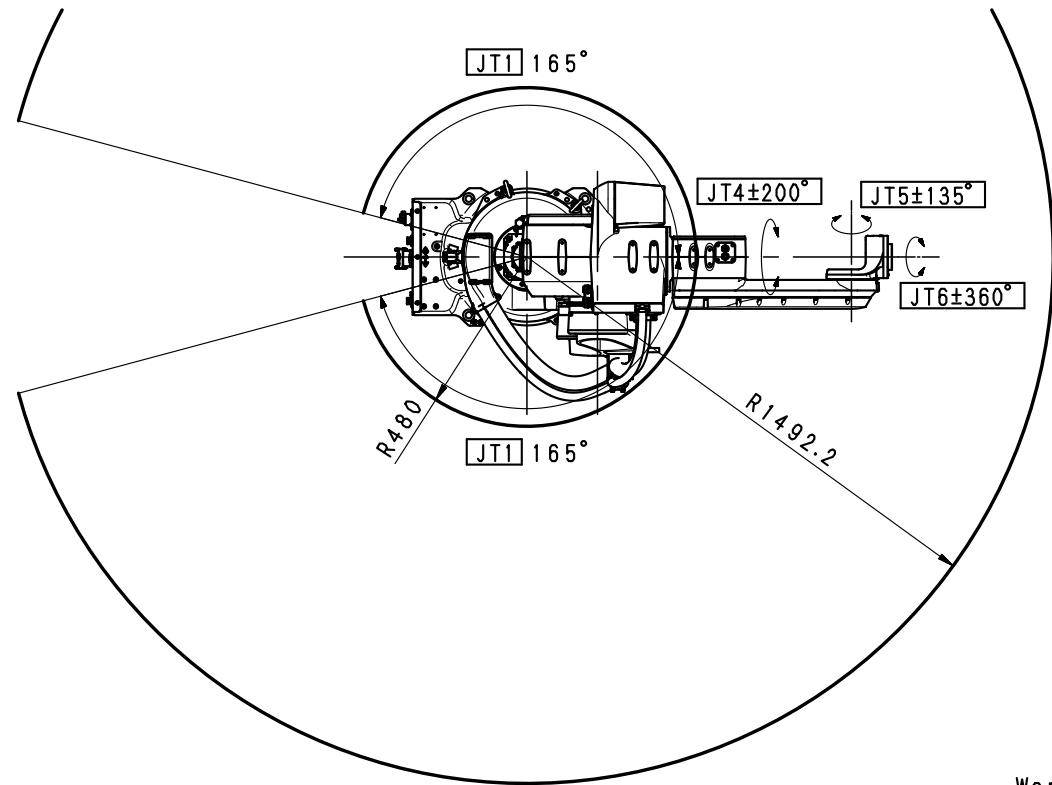
Kawasaki Heavy Industries, Ltd.
Robot Business Division

Specification number : 90151-0375DED

Robot specifications

1. Model	BA013N-A		
2. Type	Articulated robot		
3. Degree of freedom	6 axes		
4. Max. payload	13 kg		
5. Max. reach	1,492 mm		
6. Position repeatability	±0.04 mm (wrist flange surface) conforms to ISO 9283		
7. Axis specification	Operating axis	Motion range	Max. speed*
	Arm rotation (JT1)	±165 °	265 ° /s
	Arm out-in (JT2)	+150 ° - -95 °	250 ° /s
	Arm up-down (JT3)	+90 ° - -185 °	265 ° /s
	Wrist swivel (JT4)	±200 °	470 ° /s
	Wrist bend (JT5)	±135 °	475 ° /s
	Wrist twist (JT6)	±360 °	730 ° /s
	Note* The values in the table are maximum values and vary depending on conditions such as load and motion range.		
8. Load capacity of wrist		Max. torque	Moment of inertia*
	JT4	26 N·m	0.9 kg·m ²
	JT5	26 N·m	0.9 kg·m ²
	JT6	10 N·m	0.3 kg·m ²
	Note* Each value in this table shows allowable moment of inertia of JT4/JT5/JT6 when max. allowed torque is applied to each axis. If more detailed data is required for your application, please contact Kawasaki.		
9. Mass	260 kg (without options)		
10. Mounting	Floor or Ceiling or Wall mounting		
11. Installation Environment	Ambient Temperature: 0 - 45 °C		
	Relative Humidity: 35 - 85 % (with no dew condensation)		
12. Color	Munsell 10GY9/1 equivalent		
13. Degree of protection	Wrist: IP67 equivalent		
14. Built-in utilities	Pneumatic piping (φ8 × 1 line), Gas piping (φ8 × 1 line) Internal welding cable (80sq, from BASE(JT1) to JT3)		
15. Options	Sensor harness	12 circuits, wired inside robot arm	
	Solenoid valve	Double solenoid / Single solenoid valves (4 units max.)	
	Mechanical stopper	Adjustable stopper JT1	
	Installation stand	300 mm, 600 mm height	
	Base plate	750 mm × 750 mm	

Consult Kawasaki about maintenance parts and spare parts.



BA013N-A
WORKING RANGE