



Standard Specifications

KJ264U-B

KJ264U-D

KJ264U-F

KJ264U-H

(for E controller)

1st ed. 06-Sep-17

2nd ed. 31-Jan-25

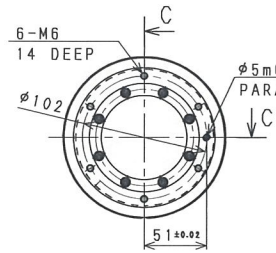
Kawasaki Heavy Industries, Ltd.
Robot Business Division

Specification number : 90151-0207DEB

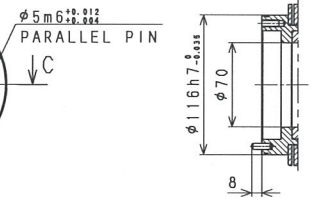
Robot specifications

1. Model	Installation mode		Fix Installation		Flexible Installation	
			Standard	Mirror	Standard	Mirror
	Floor		KJ264U-B4	KJ264U-B5	KJ264U-B0	KJ264U-B1
	Mounting wall is left side		KJ264U-D4	KJ264U-D5	KJ264U-D0	KJ264U-D1
	Mounting wall is right side		KJ264U-F4	KJ264U-F5	KJ264U-F0	KJ264U-F1
Shelf		KJ264U-H4	KJ264U-H5	KJ264U-H0	KJ264U-H1	
2. Type	Articulated robot					
3. Degree of freedom	6 axes					
4. Max. payload	Wrist : 15 kg (at the tool mounting surface) Upper arm : 25 kg (including painting equipment in the pressurized chamber)					
5. Max. reach	2,640 mm					
6. Position repeatability	±0.5 mm (wrist flange surface) conforms to ISO 9283					
7. Max. painting speed	1,500 mm/s (at the center of tool mounting surface)					
8. Axis specification	Operating axis		Motion range			
	Arm rotation (JT1)		KJ264U-B□	±120°		
			KJ264U-D□	+ 120° - - 30°		
			KJ264U-F□	+ 30° - - 120°		
			KJ264U-H□	±120°		
	Arm out-in (JT2)		+ 130° - - 80°			
	Arm up-down (JT3)		+ 90° - - 65°			
	Wrist swivel (JT4)		±720°			
Wrist bend (JT5)		±720°				
Wrist twist (JT6)		±410°				
9. Load capacity of wrist		Max. torque	Moment of inertia*			
	JT4	56.2 N·m	2.19 kg·m ²			
	JT5	43.4 N·m	1.31 kg·m ²			
	JT6	22.0 N·m	0.33 kg·m ²			
	Note * Each value in this table shows allowable moment of inertia of JT4/JT5/JT6 when max. allowed torque is applied to each axis. If more detailed data is required for your application, please contact Kawasaki.					
10. Mass	KJ264U-B□		540 kg (without options)			
	KJ264U-D□, -F□, -H□		530 kg (without options)			
11. Mounting	KJ264U-B□(Floor)		KJ264U-D□(Mounting wall is left side)			
	KJ264U-F□(Mounting wall is right side)		KJ264U-H□(Shelf)			
	KJ264U-□4, KJ264U-□5		Fix Installation (install on fixed plane)			
KJ264U-□0, KJ264U-□1		Flexible Installation (install on traverse unit)				
12. Installation Environment	Ambient Temperature :		0 - 40 °C			
	Relative Humidity :		35 - 85 % (with no dew condensation)			
13. Color	Munsell 10GY9/1 equivalent					
14. Explosion proof	Pressurized and intrinsically safe					
15. Air supply to the manipulator	Clean & dry air	0.5 Nm ³ /min, 0.4 - 0.7 MPa				
	Dew point	- 17 or less at atmospheric pressure				
	Solid material	0.01 μm or less				
	Oil content	Mist separation 99.9999% or more				
16. Options	Mechanical stopper	Adjustable stoppers JT1/JT2/JT3				
	Painting equipment	FGP motor (1 unit can be equipped with)				
		Solenoid valve for painting (up to 3 units can be equipped with)				
		Electro pneumatic converter for painting (up to 3 units can be equipped with)				
	Upper Arm Cover					
	Application hose protection unit					

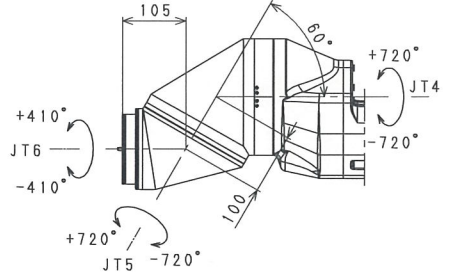
Consult Kawasaki about maintenance parts and spare parts.



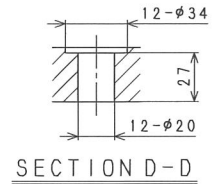
VIEW B



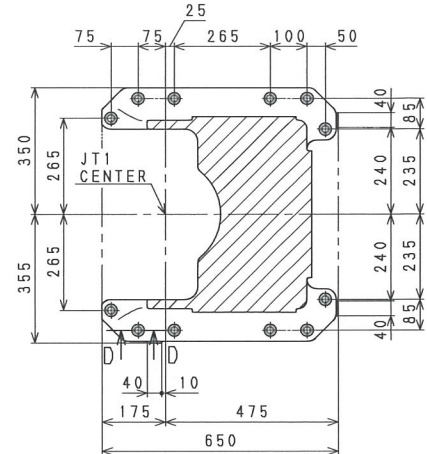
SECTION C-C



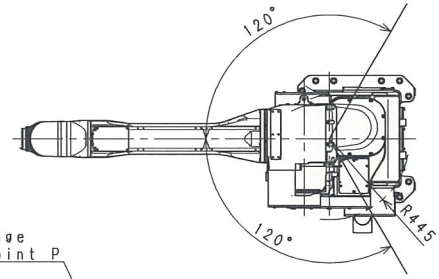
DETAIL A



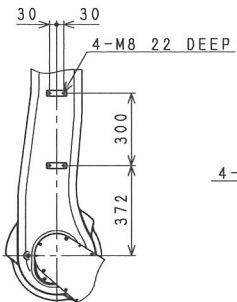
SECTION D-D



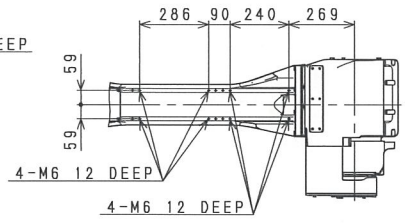
Base Installation Dimensions



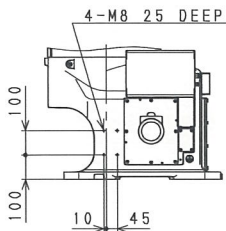
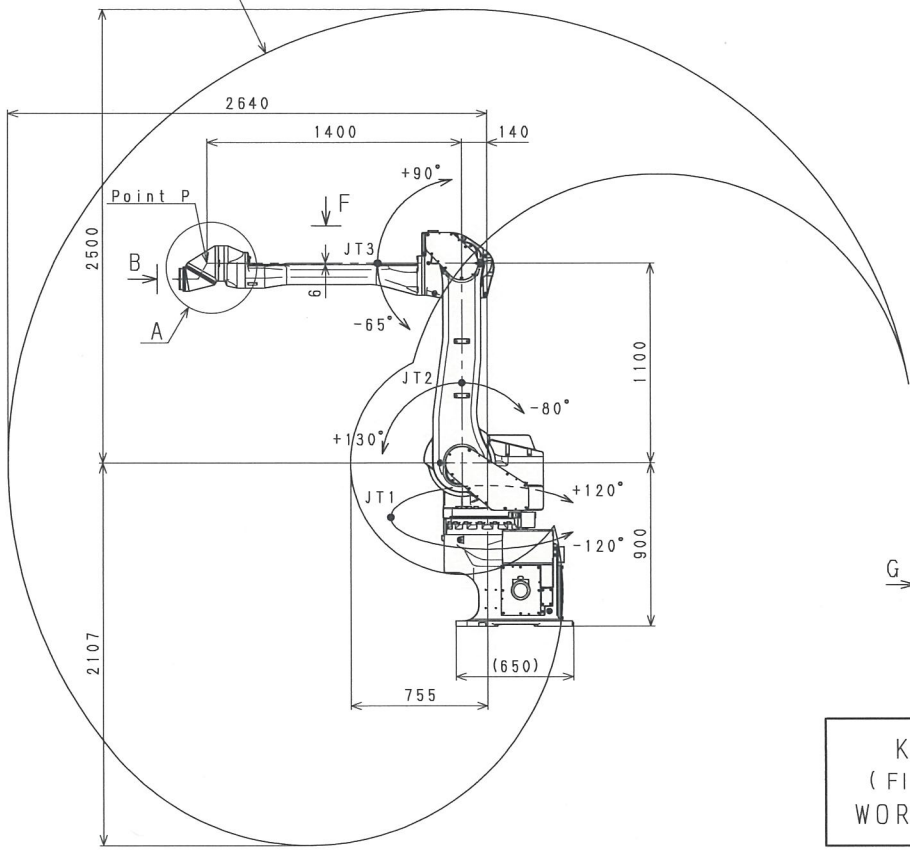
Working range based on point P



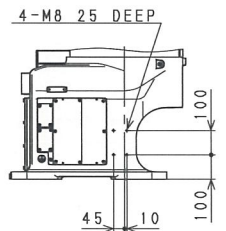
VIEW E



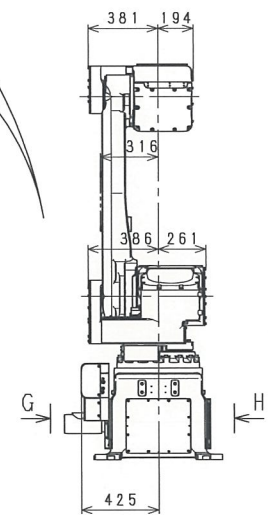
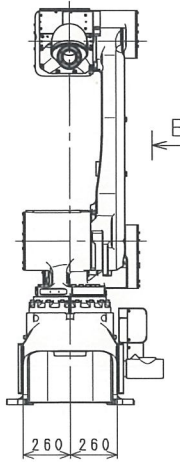
VIEW F



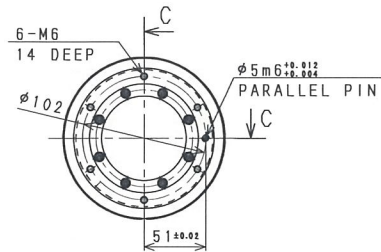
VIEW G



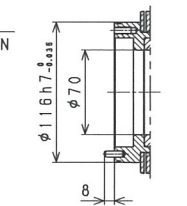
VIEW H



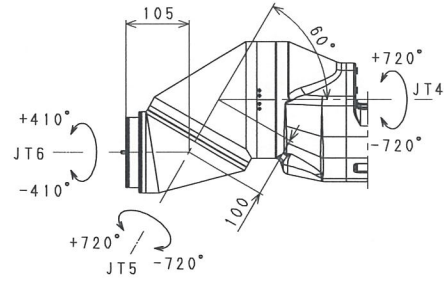
KJ264U-B4
(FIX INSTALLATION)
WORKING RANGE



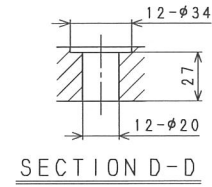
VIEW B



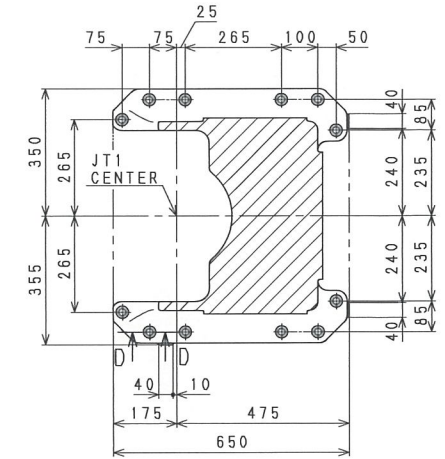
SECTION C-C



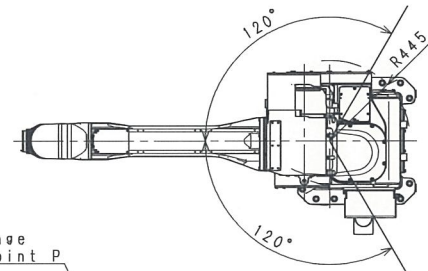
DETAIL A



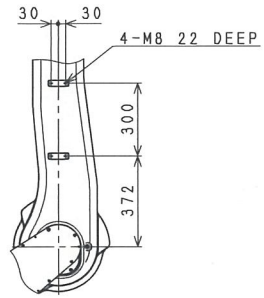
SECTION D-D



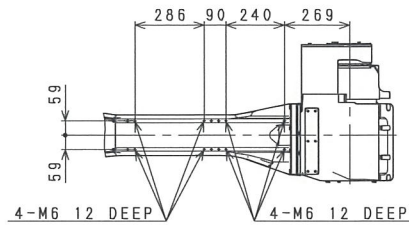
Base Installation Dimensions



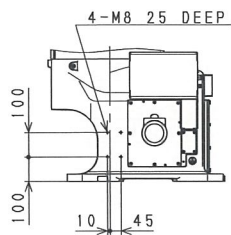
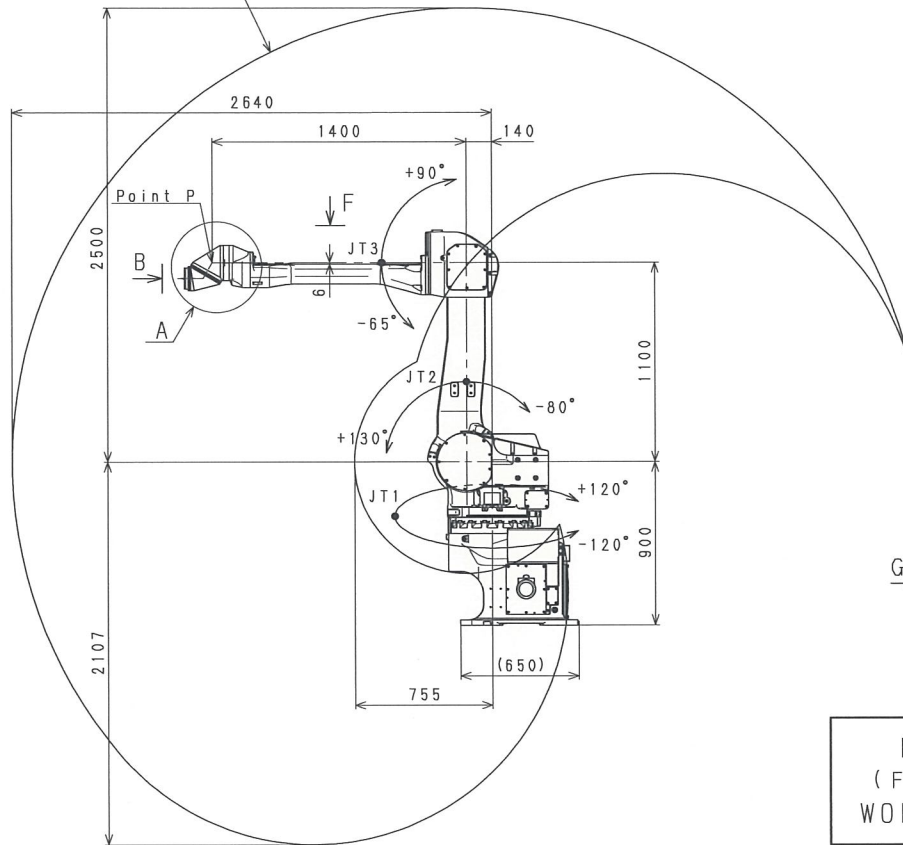
Working range based on point P



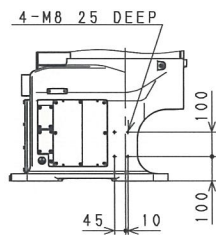
VIEW E



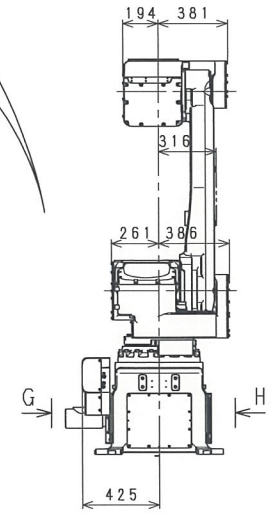
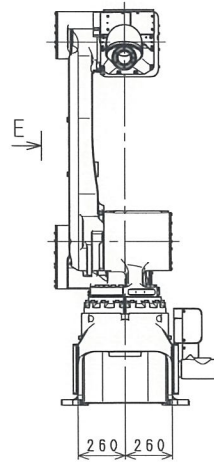
VIEW F



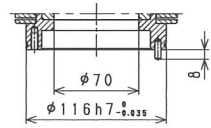
VIEW G



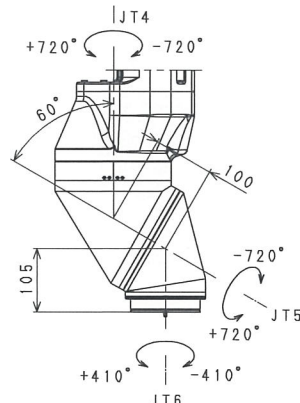
VIEW H



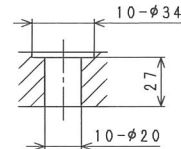
KJ264U-B5
(FIX INSTALLATION)
WORKING RANGE



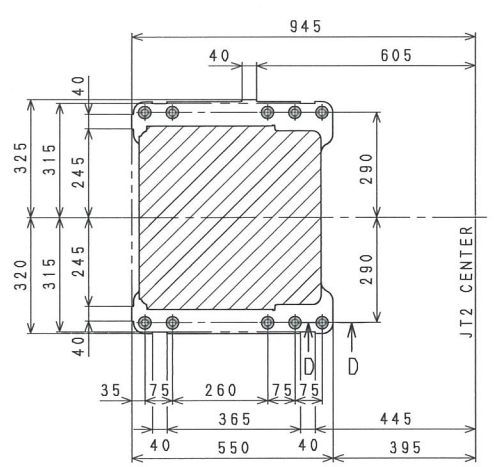
SECTION C-C



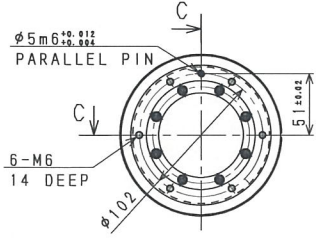
DETAIL A



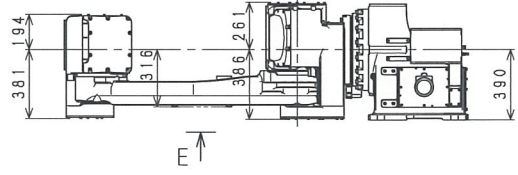
SECTION D-D



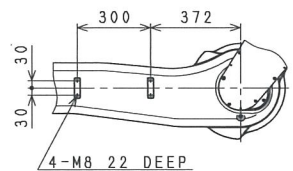
Base Installation Dimensions



VIEW B

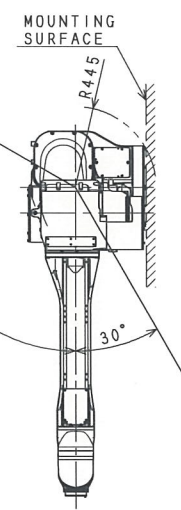


E

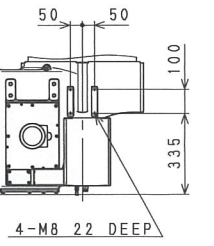
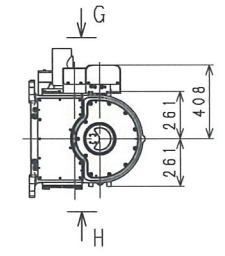
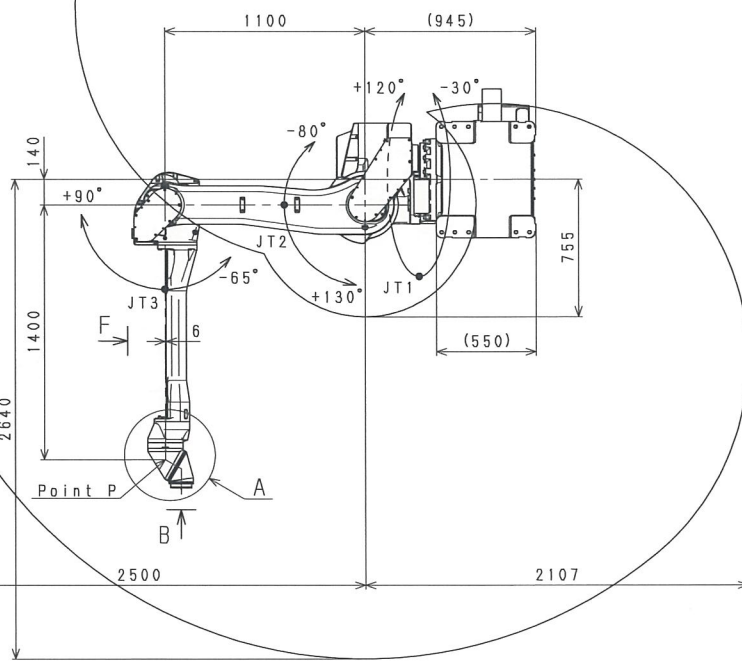


VIEW E

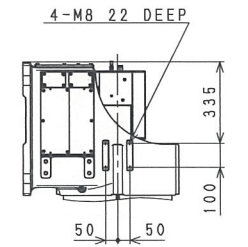
Working range based on point P



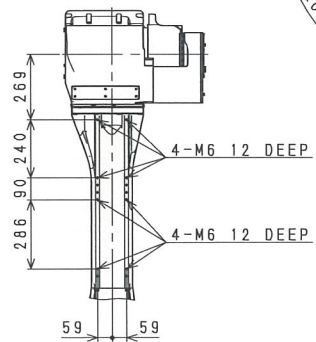
120°



VIEW G

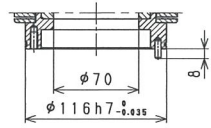


VIEW H

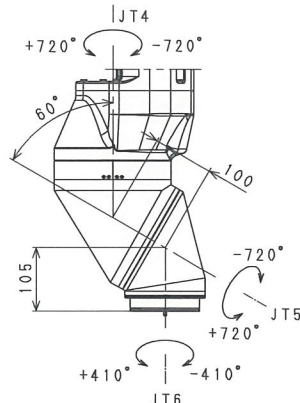


VIEW F

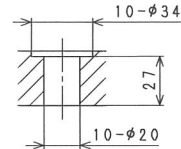
KJ264U-D4
(FIX INSTALLATION)
WORKING RANGE



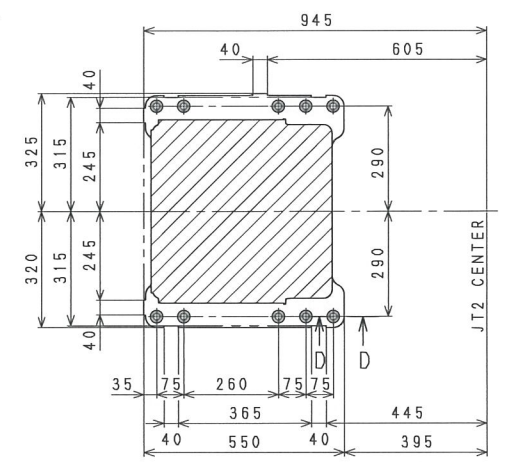
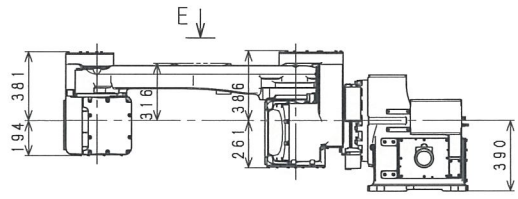
SECTION C-C



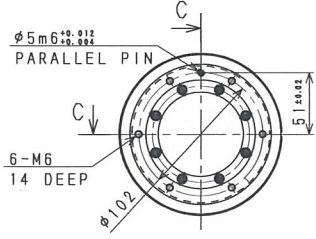
DETAIL A



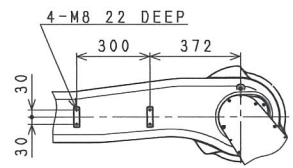
SECTION D-D



Base Installation Dimensions



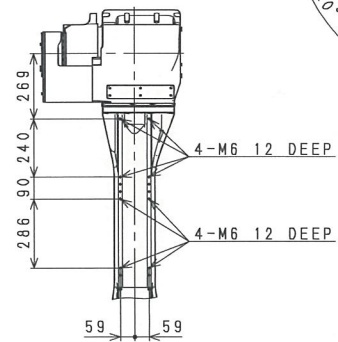
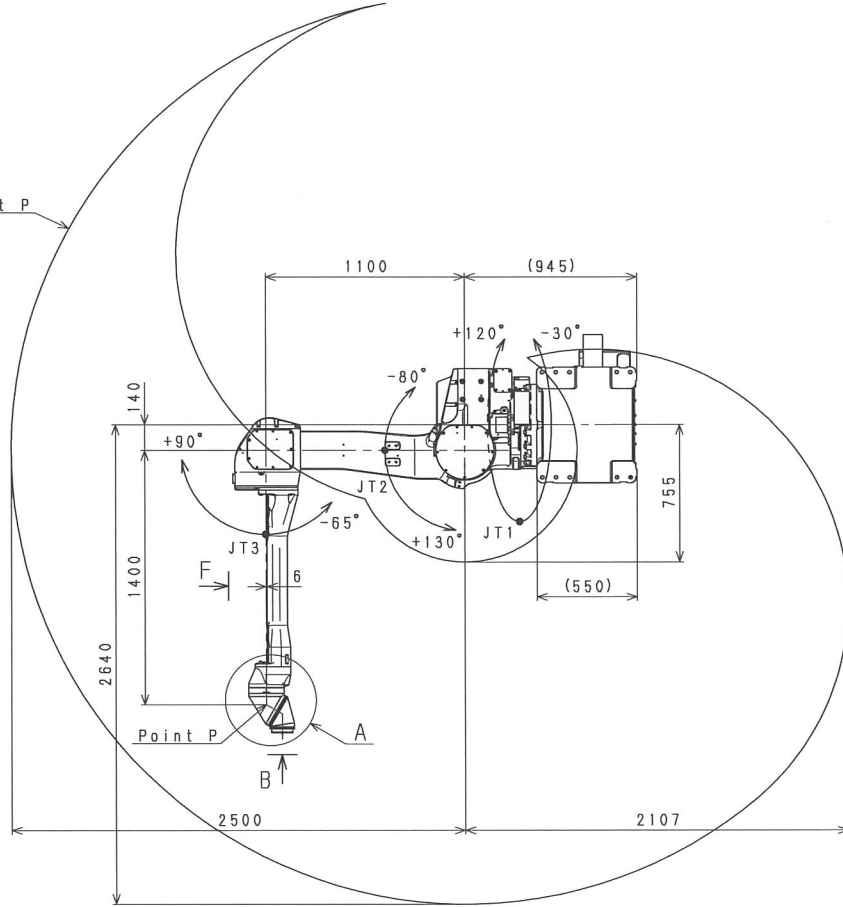
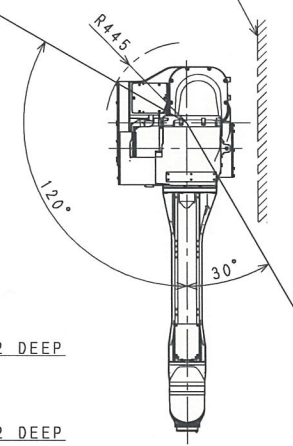
VIEW B



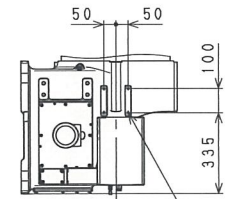
VIEW E

Working range based on point P

MOUNTING SURFACE

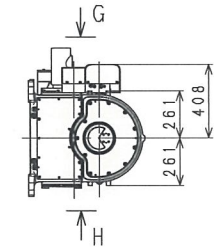


VIEW F

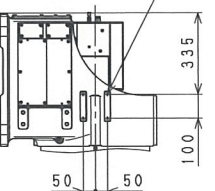


4-M8 22 DEEP

VIEW G

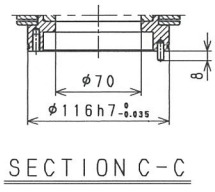


4-M8 22 DEEP

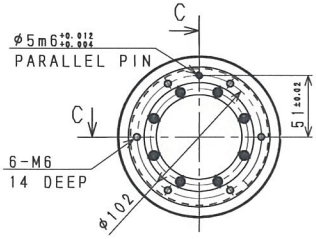


VIEW H

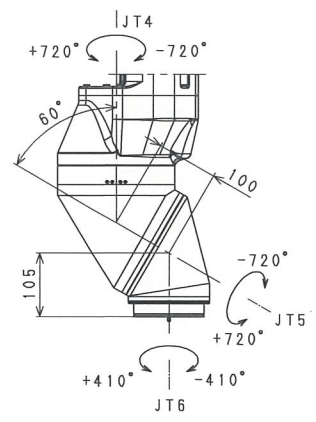
KJ264U-D5
(FIX INSTALLATION)
WORKING RANGE



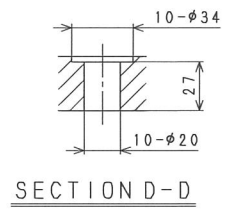
SECTION C-C



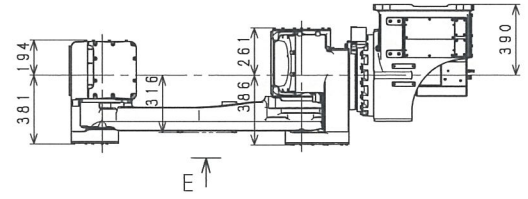
VIEW B



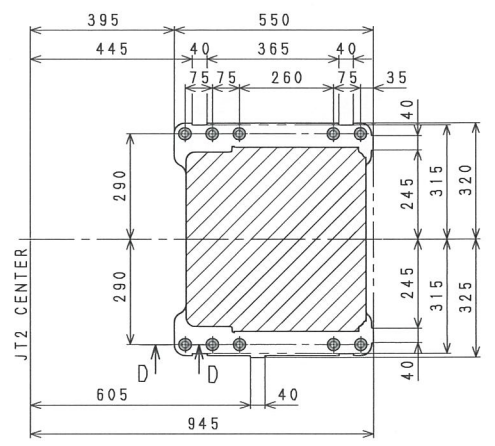
DETAIL A



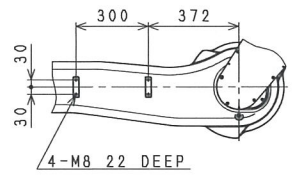
SECTION D-D



E

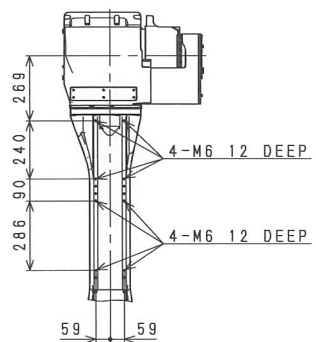
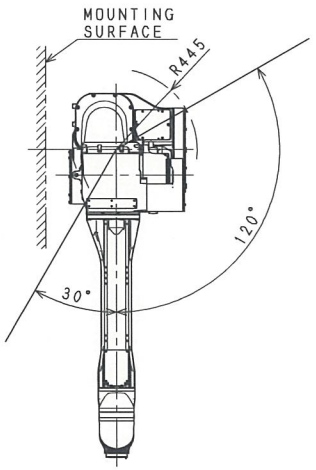


Base Installation Dimensions

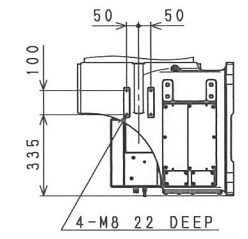
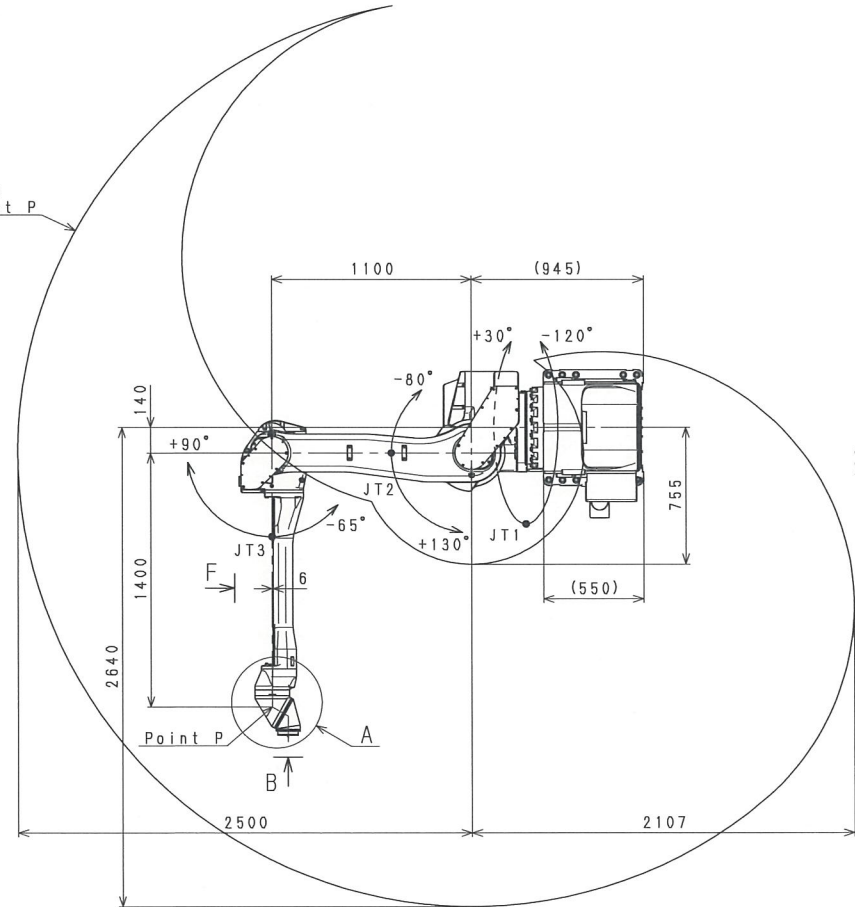


VIEW E

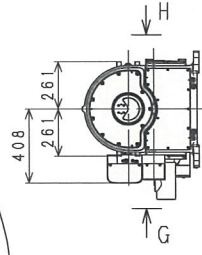
Working range based on point P



VIEW F

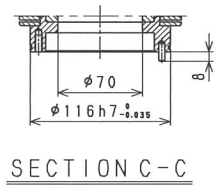


VIEW H

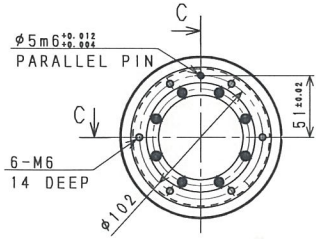


VIEW G

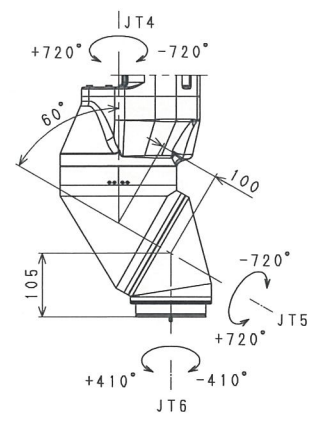
KJ264U-F4
(FIX INSTALLATION)
WORKING RANGE



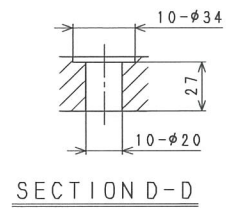
SECTION C-C



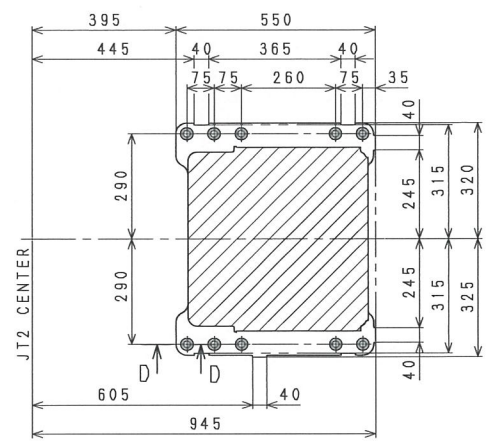
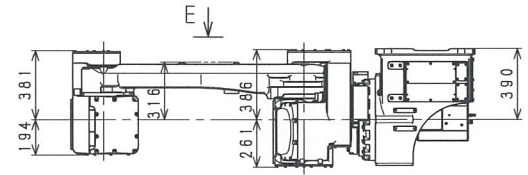
VIEW B



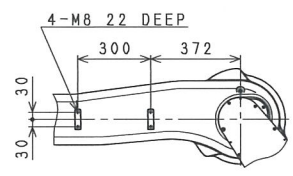
DETAIL A



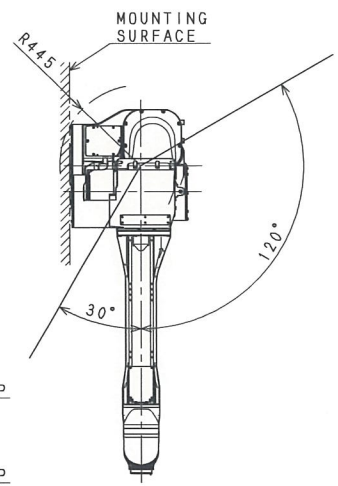
SECTION D-D



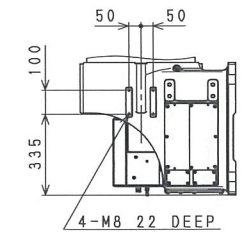
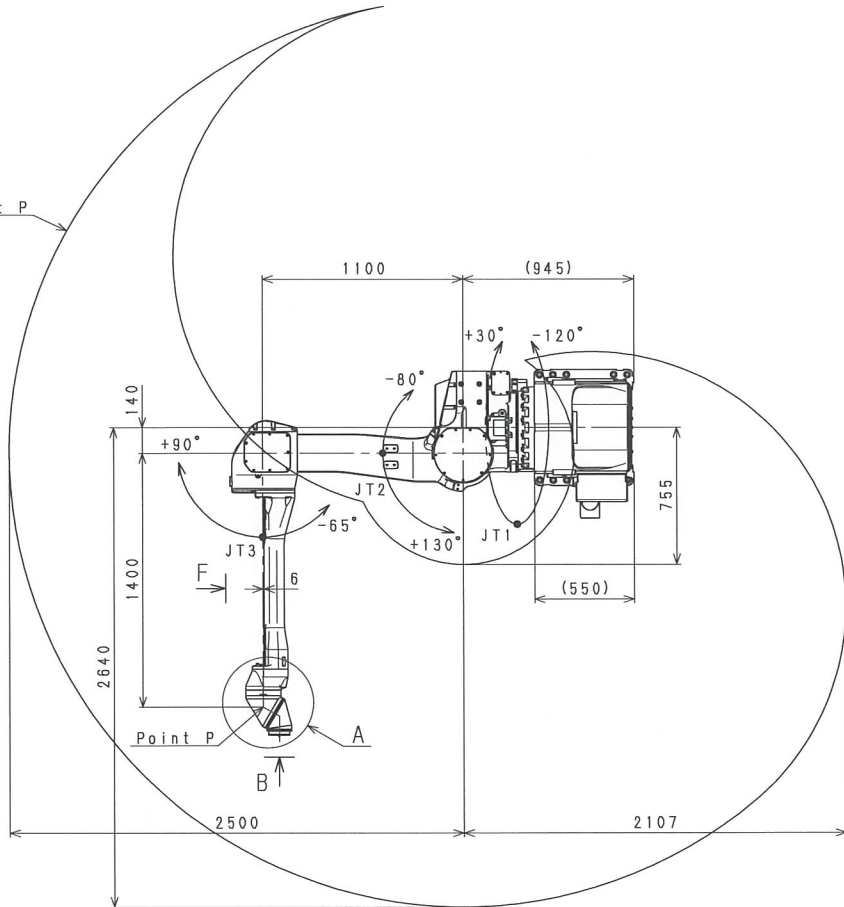
Base Installation Dimensions



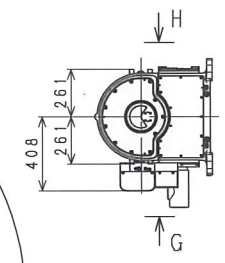
VIEW E



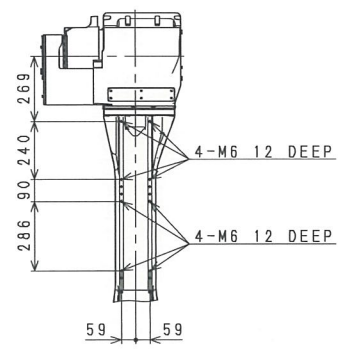
Working range based on point P



VIEW H

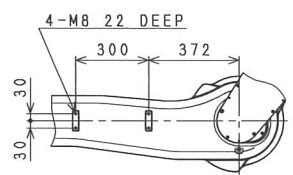
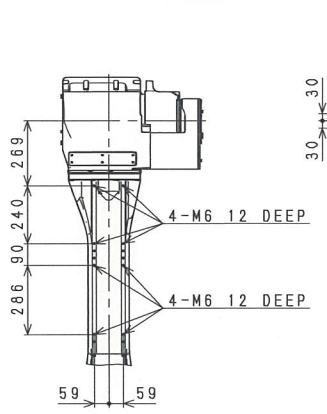
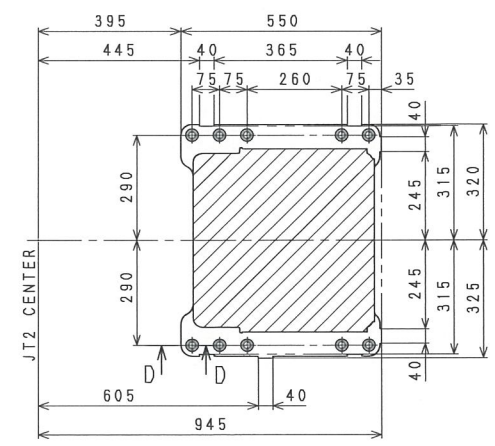
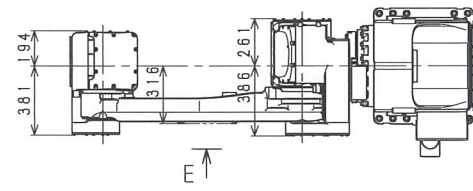
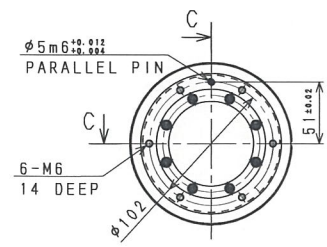
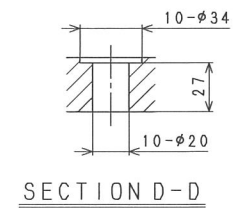
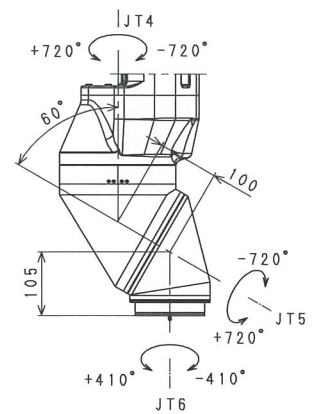
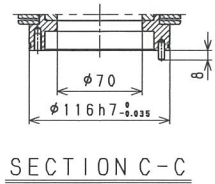


VIEW G

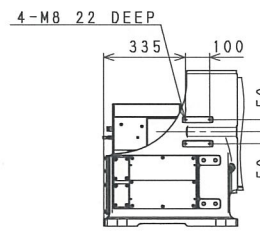
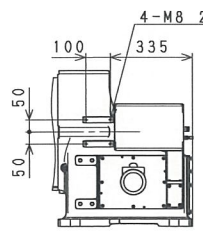
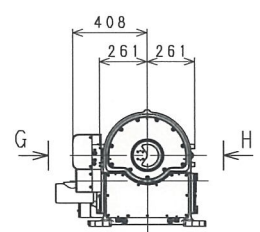
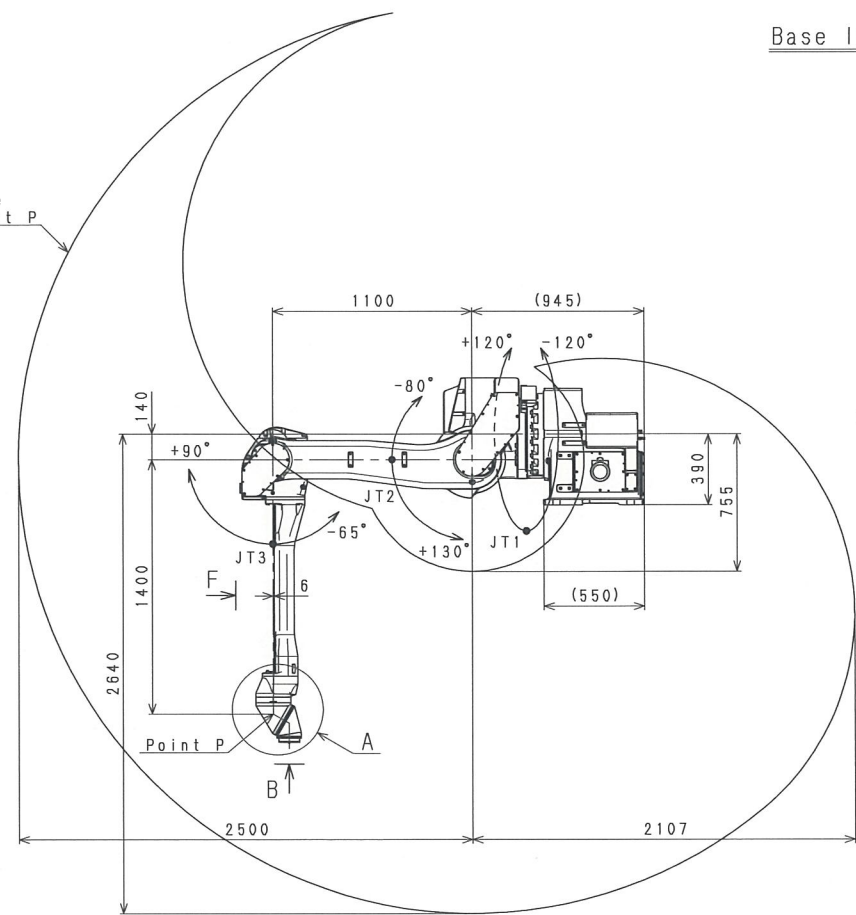
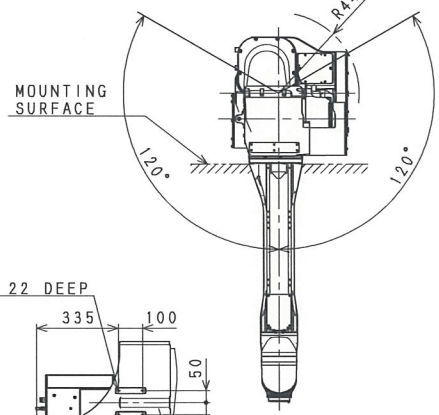


VIEW F

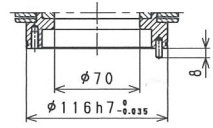
KJ264U-F5
(FIX INSTALLATION)
WORKING RANGE



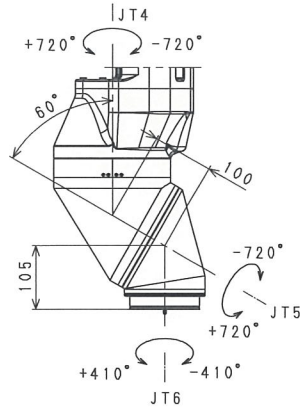
Working range based on point P



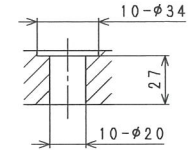
KJ264U-H4
(FIX INSTALLATION)
WORKING RANGE



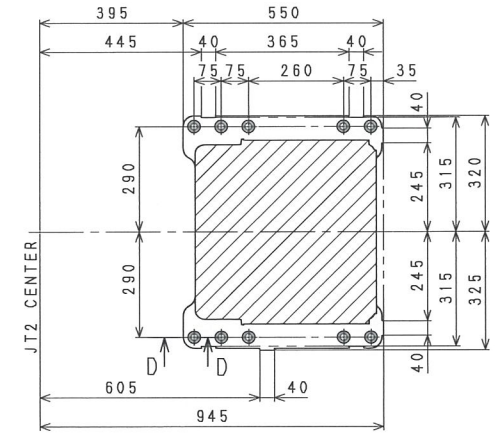
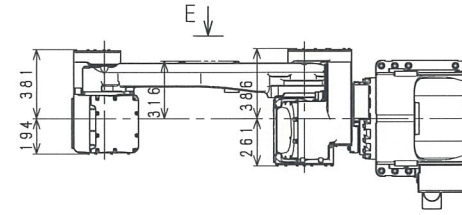
SECTION C-C



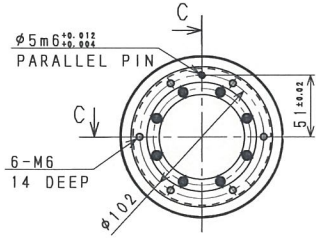
DETAIL A



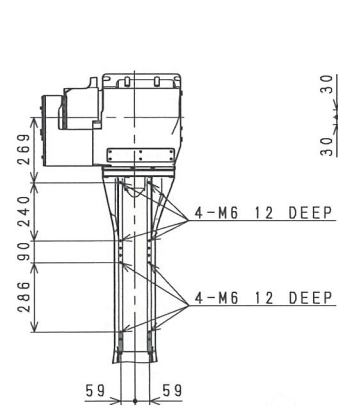
SECTION D-D



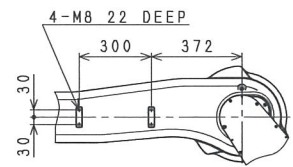
Base Installation Dimensions



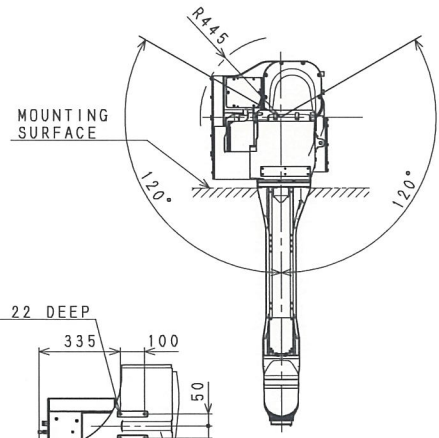
VIEW B



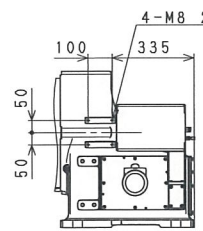
VIEW F



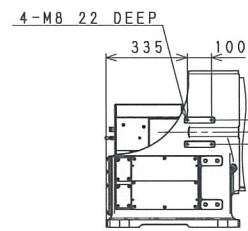
VIEW E



VIEW H

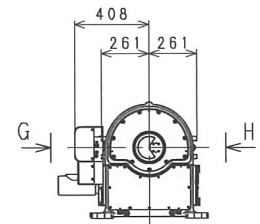
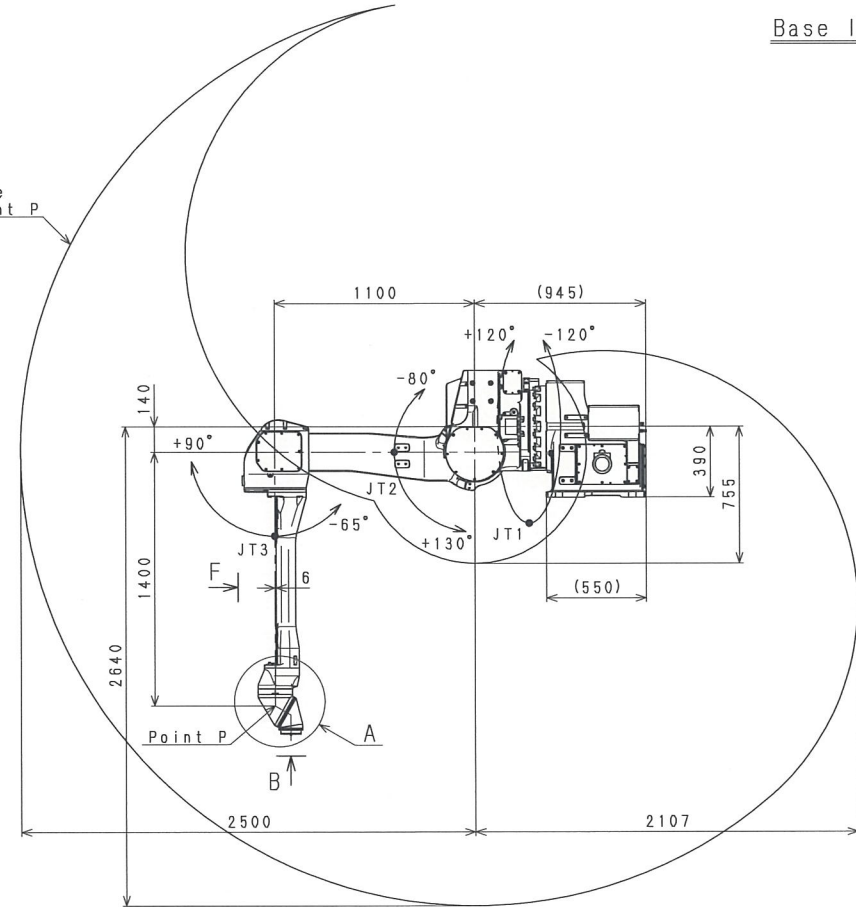


VIEW G

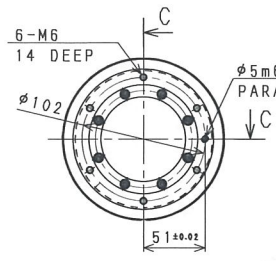


VIEW H

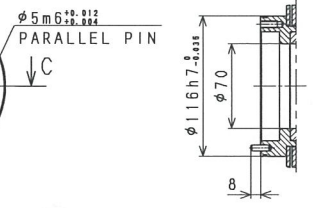
Working range based on point P



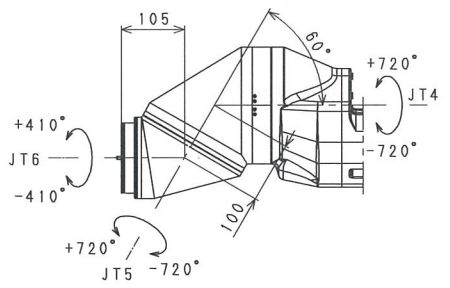
KJ264U-H5
(FIX INSTALLATION)
WORKING RANGE



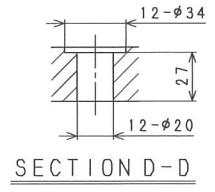
VIEW B



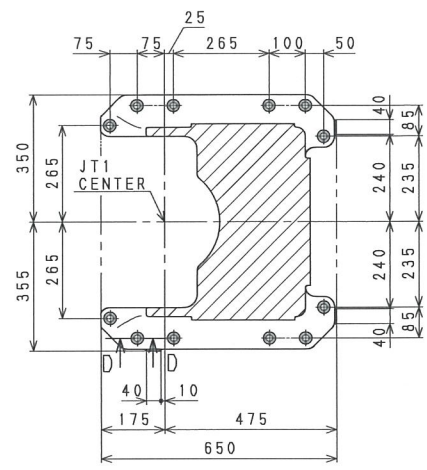
SECTION C-C



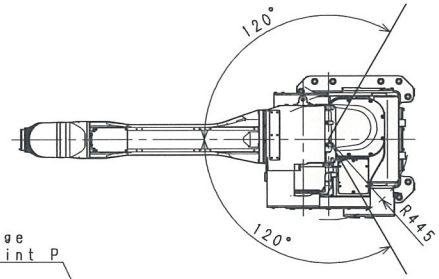
DETAIL A



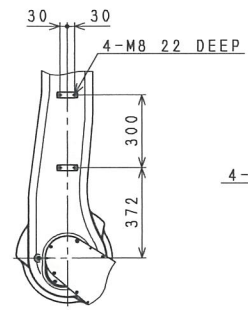
SECTION D-D



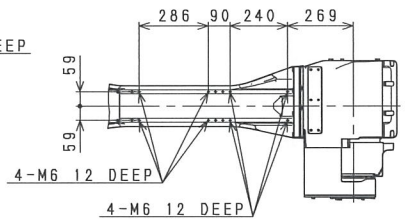
Base Installation Dimensions



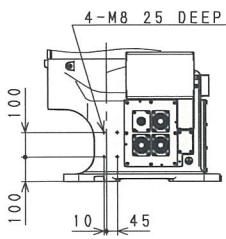
Working range based on point P



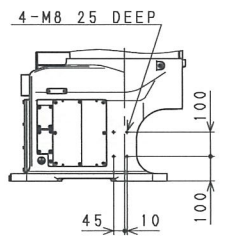
VIEW E



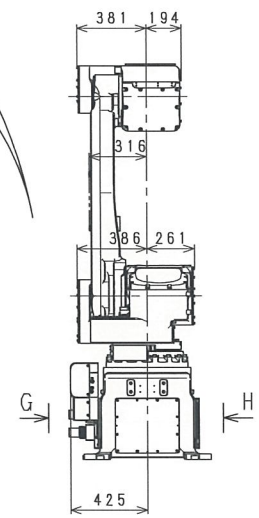
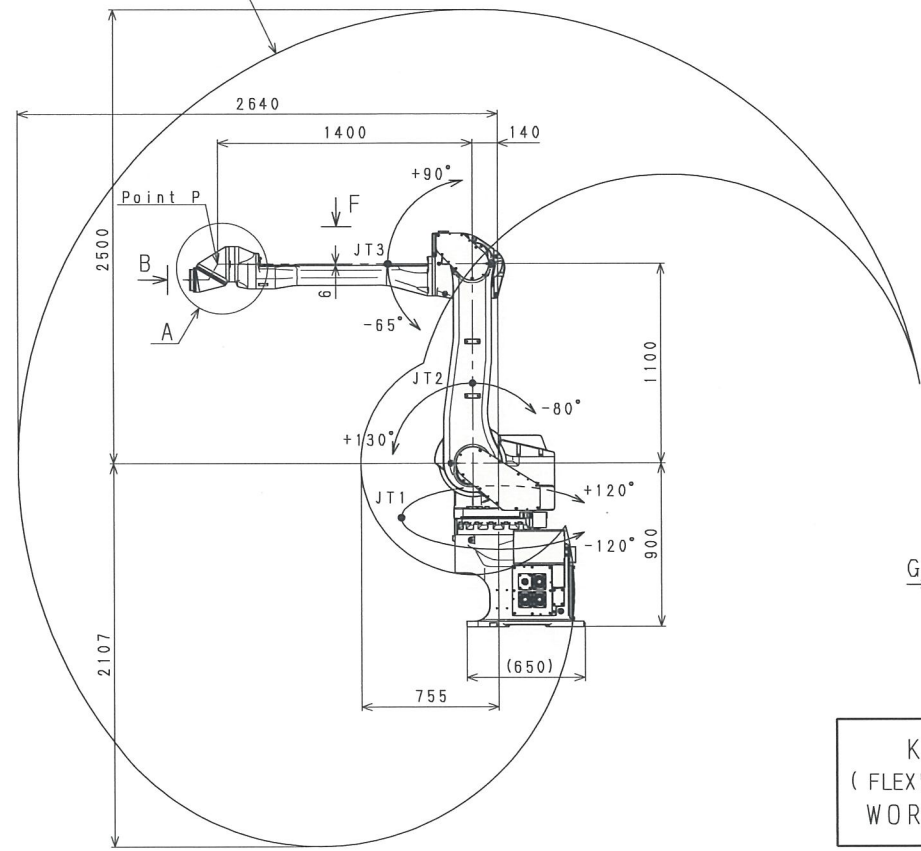
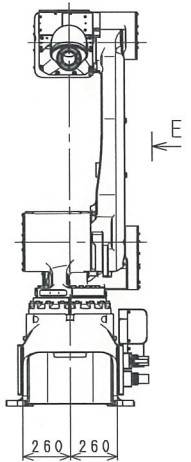
VIEW F



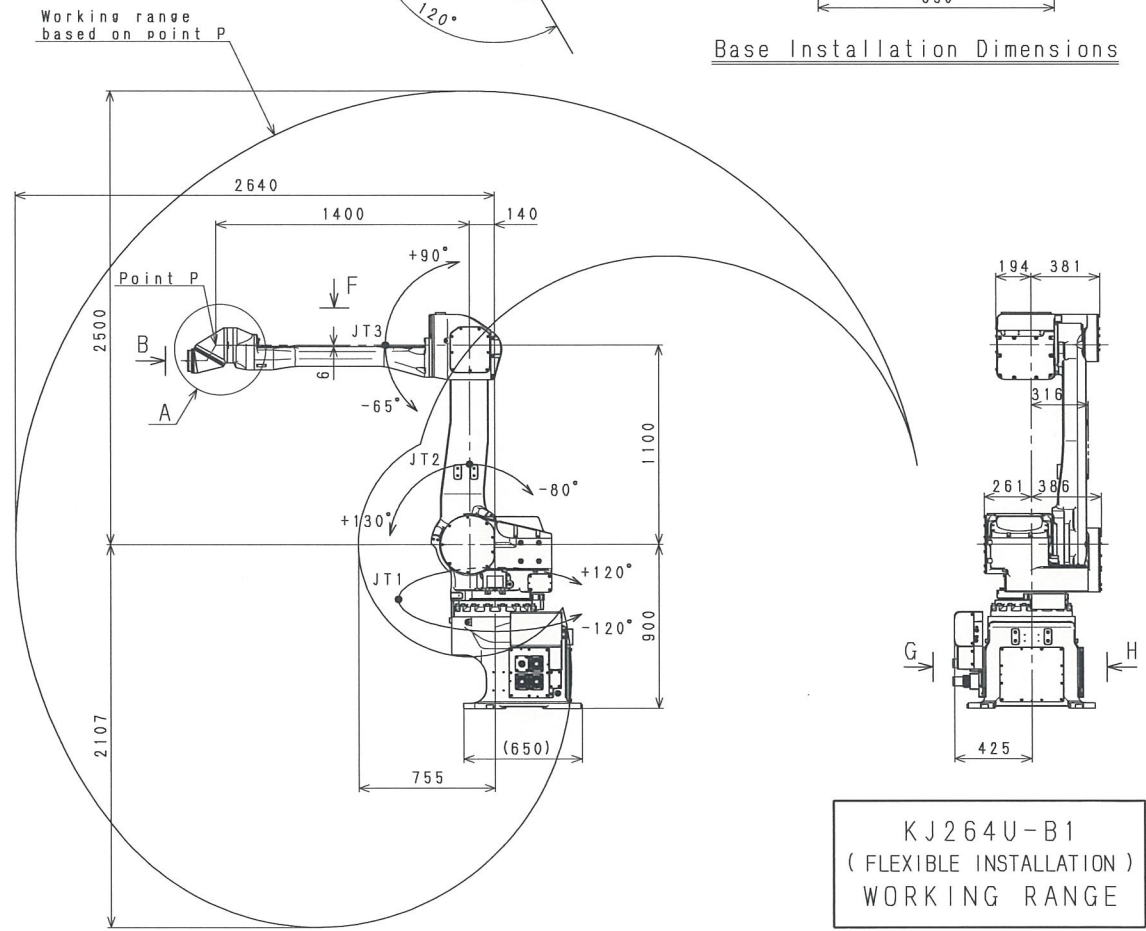
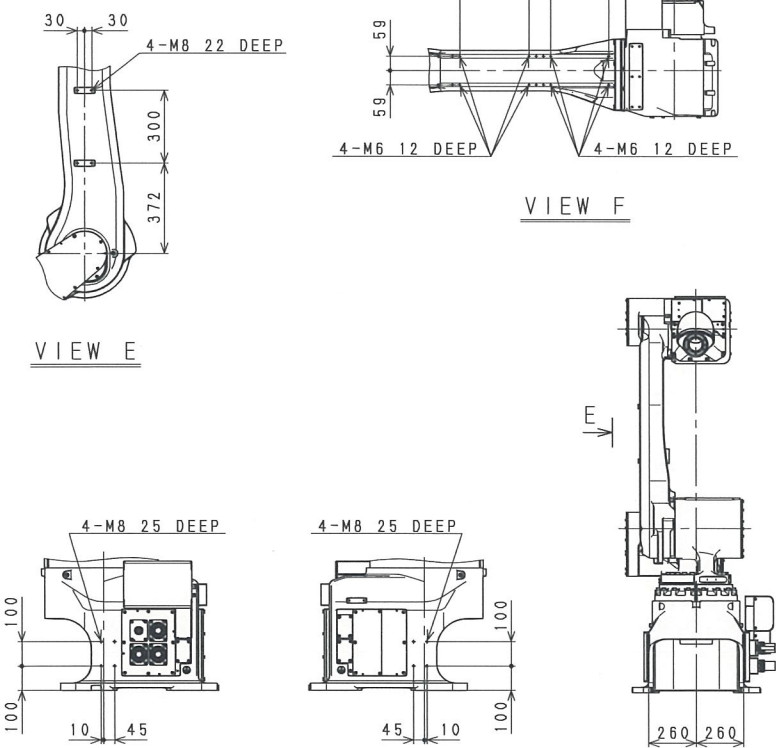
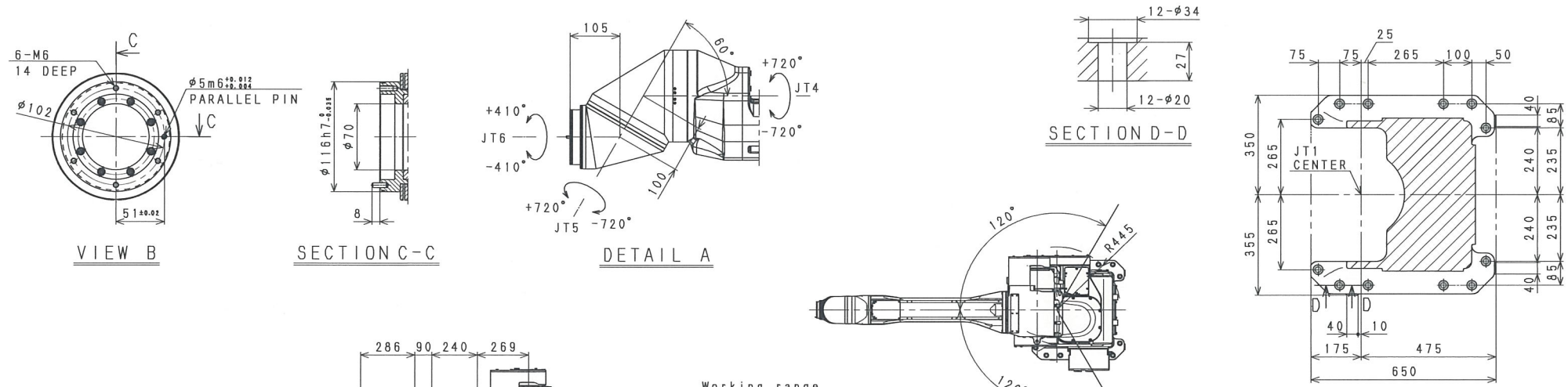
VIEW G



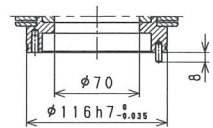
VIEW H



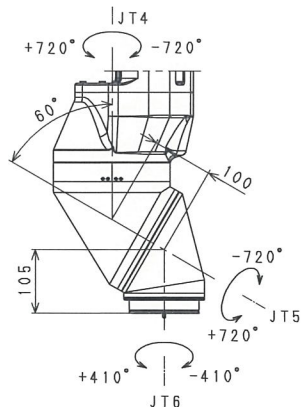
KJ264U-B0
(FLEXIBLE INSTALLATION)
WORKING RANGE



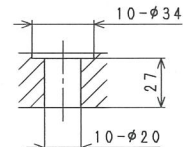
KJ264U-B1
(FLEXIBLE INSTALLATION)
WORKING RANGE



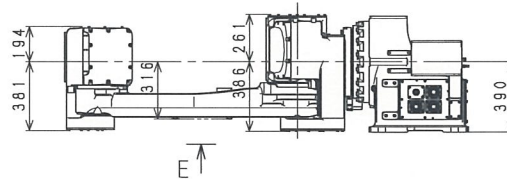
SECTION C-C



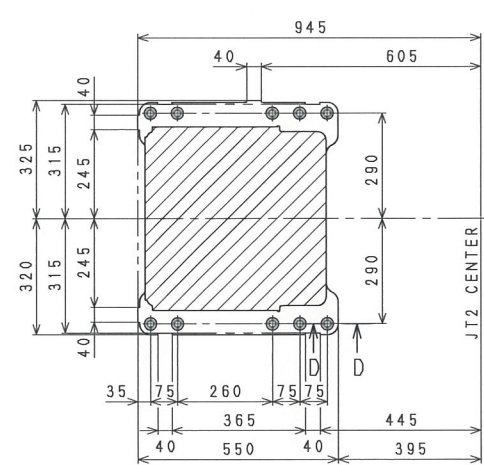
DETAIL A



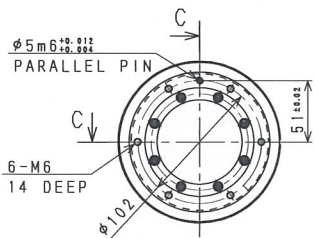
SECTION D-D



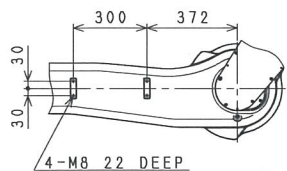
E



Base Installation Dimensions



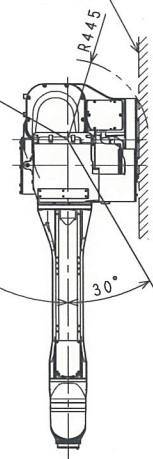
VIEW B



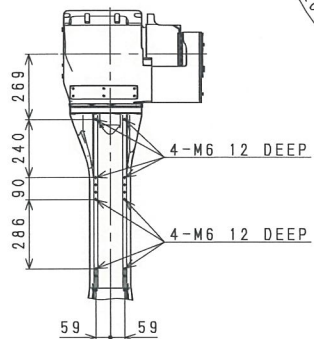
VIEW E

Working range based on point P

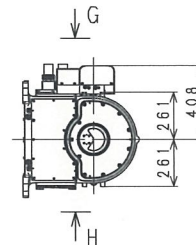
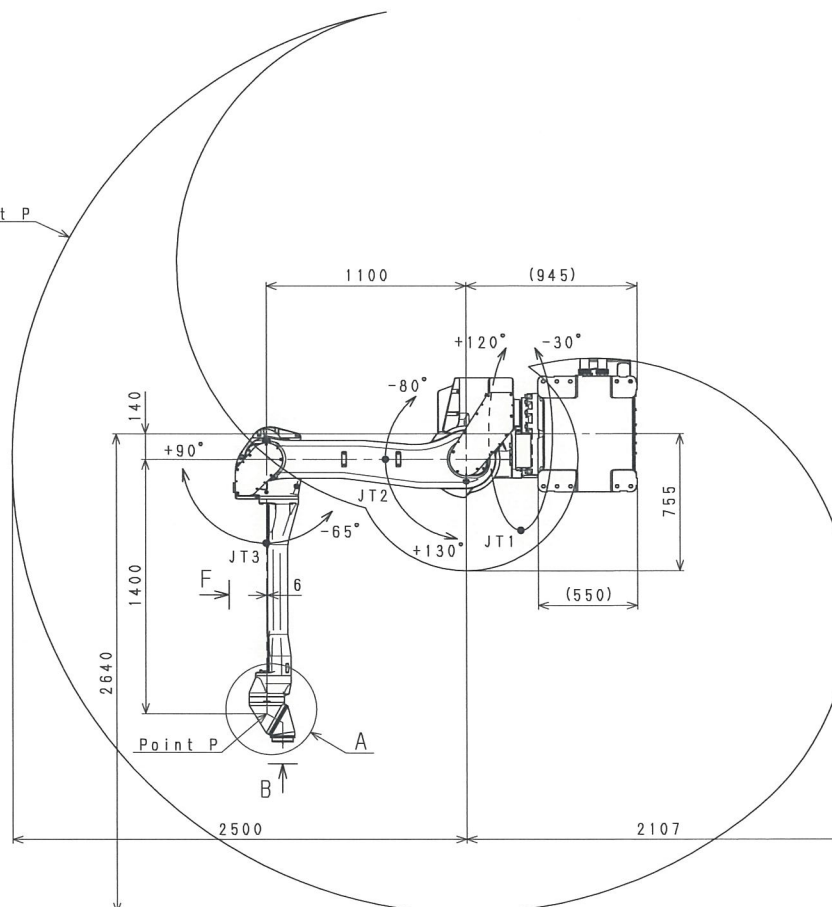
MOUNTING SURFACE



120°

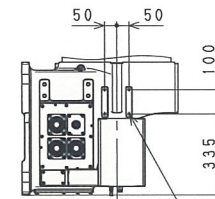


VIEW F



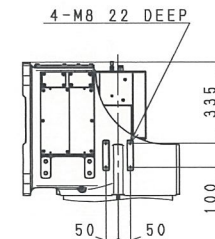
G

H



4-M8 22 DEEP

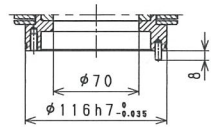
VIEW G



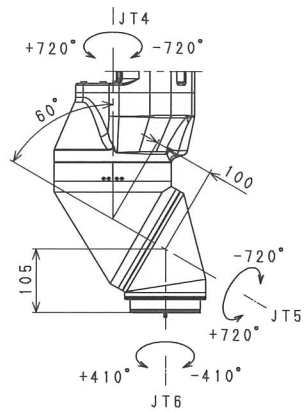
4-M8 22 DEEP

VIEW H

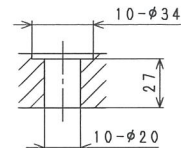
KJ264U-D0
(FLEXIBLE INSTALLATION)
WORKING RANGE



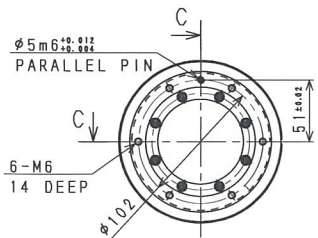
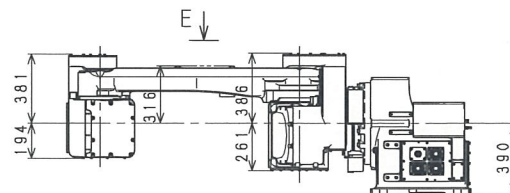
SECTION C-C



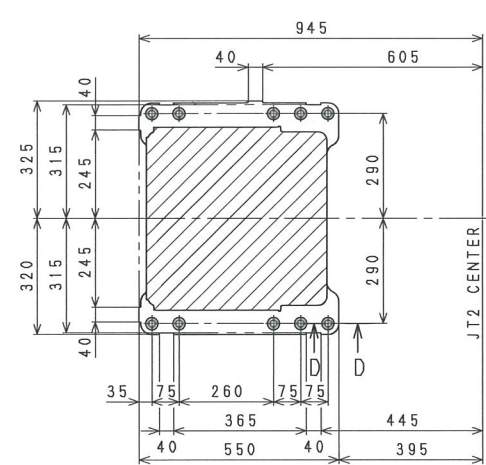
DETAIL A



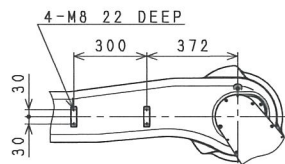
SECTION D-D



VIEW B



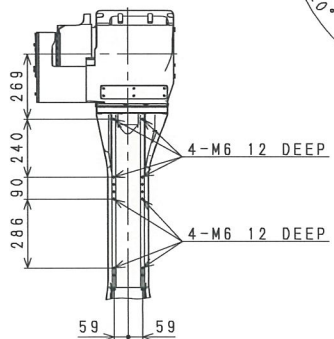
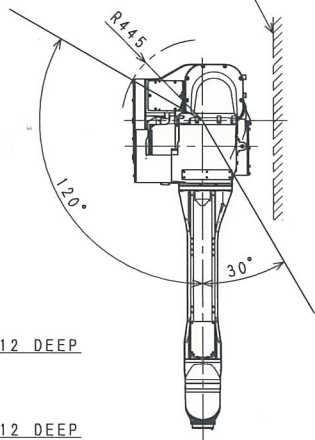
Base Installation Dimensions



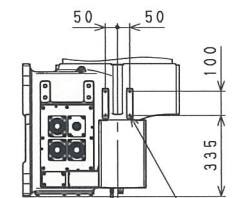
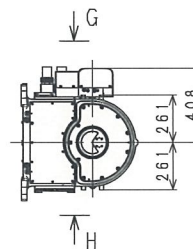
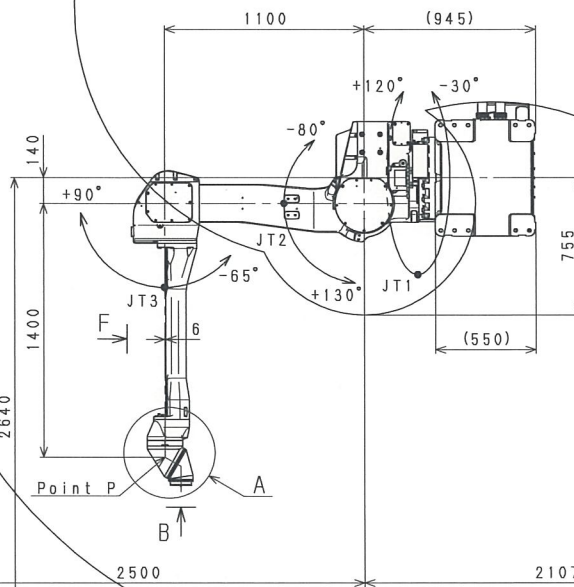
VIEW E

Working range based on point P

MOUNTING SURFACE

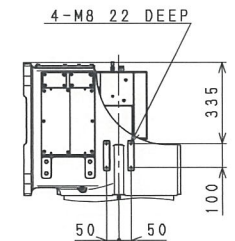


VIEW F



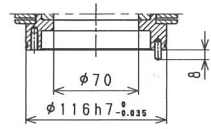
4-M8 22 DEEP

VIEW G

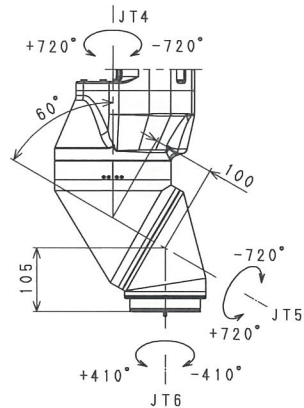


VIEW H

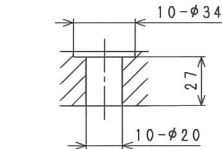
KJ264U-D1
(FLEXIBLE INSTALLATION)
WORKING RANGE



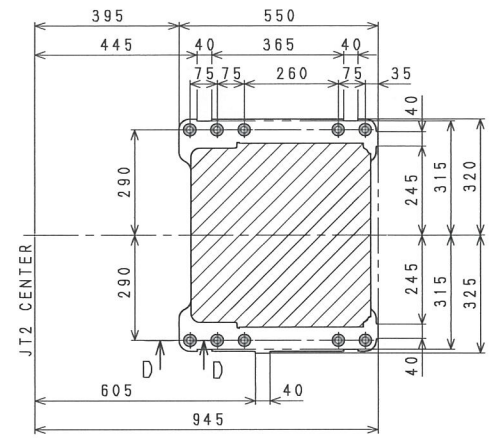
SECTION C-C



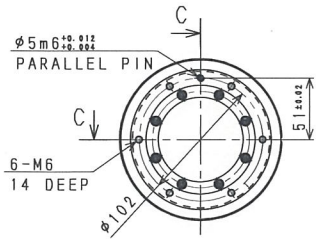
DETAIL A



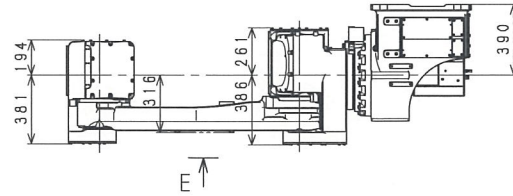
SECTION D-D



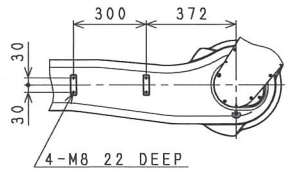
Base Installation Dimensions



VIEW B

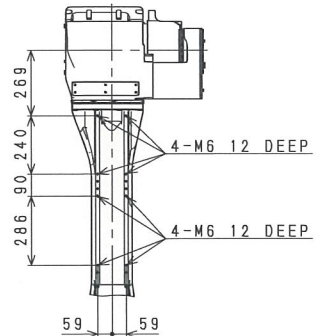
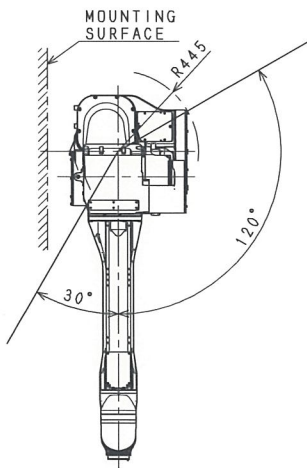


VIEW E

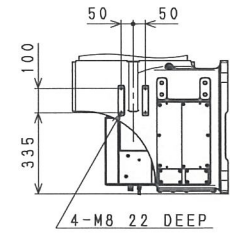
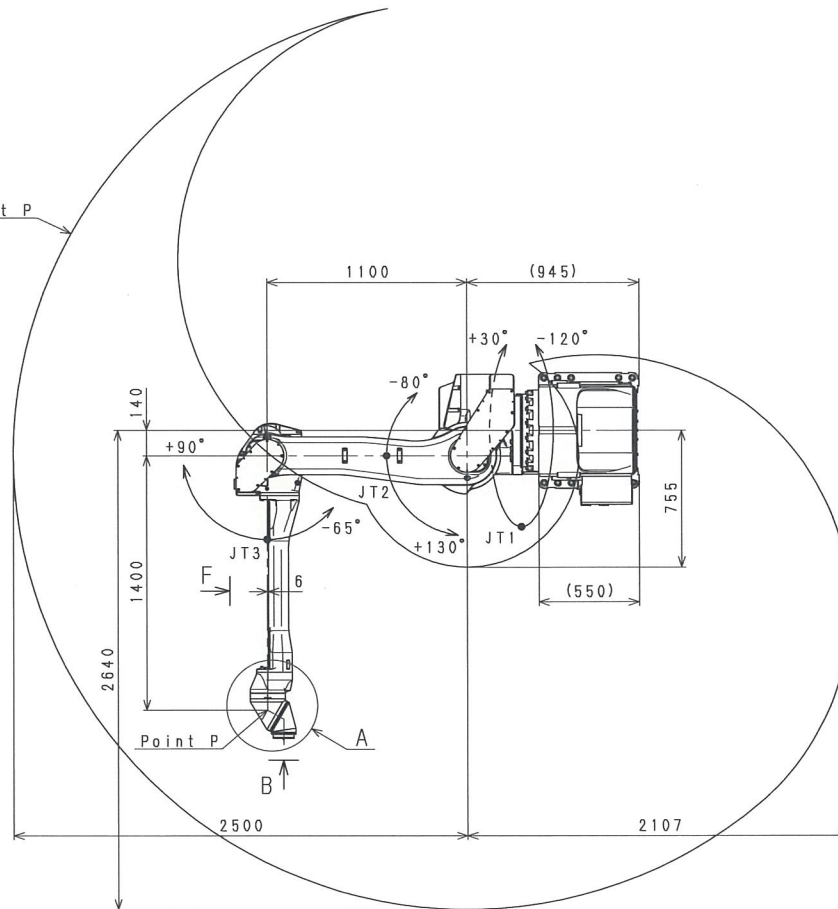


VIEW E

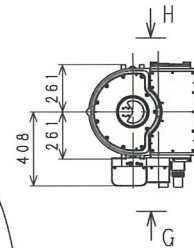
Working range based on point P



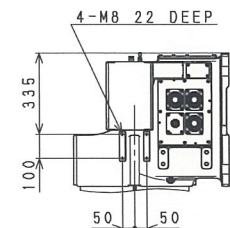
VIEW F



VIEW H

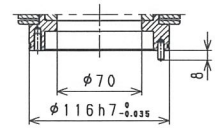


VIEW G

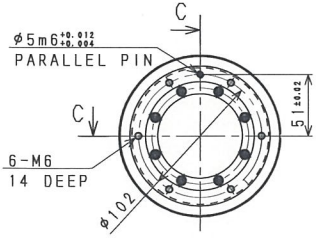


VIEW G

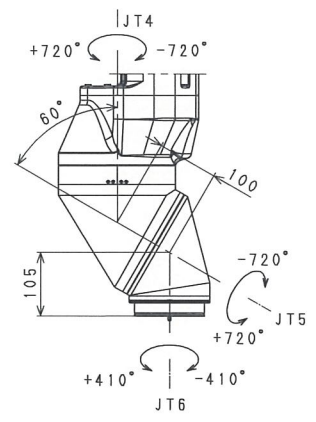
KJ264U-F0
(FLEXIBLE INSTALLATION)
WORKING RANGE



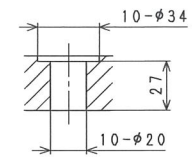
SECTION C-C



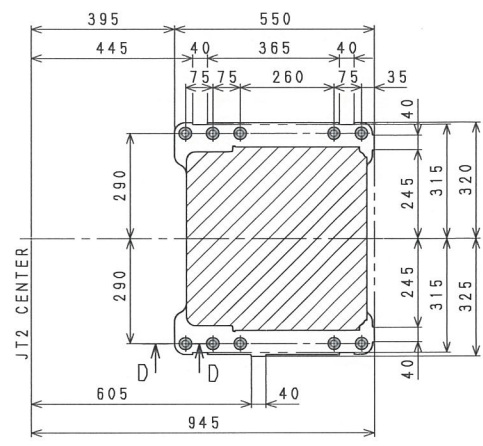
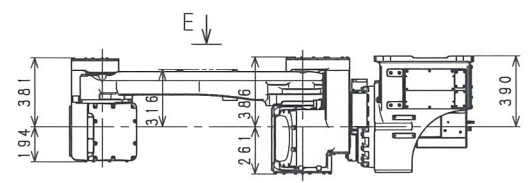
VIEW B



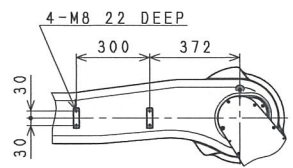
DETAIL A



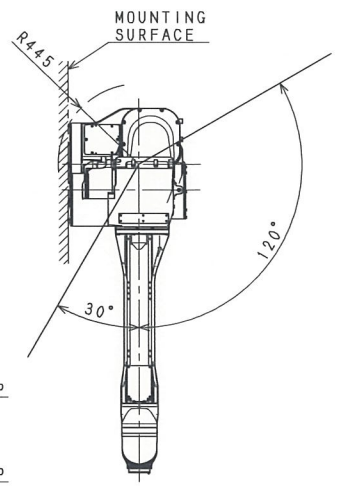
SECTION D-D



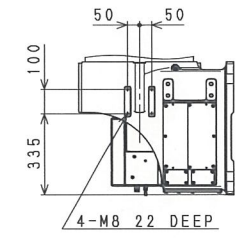
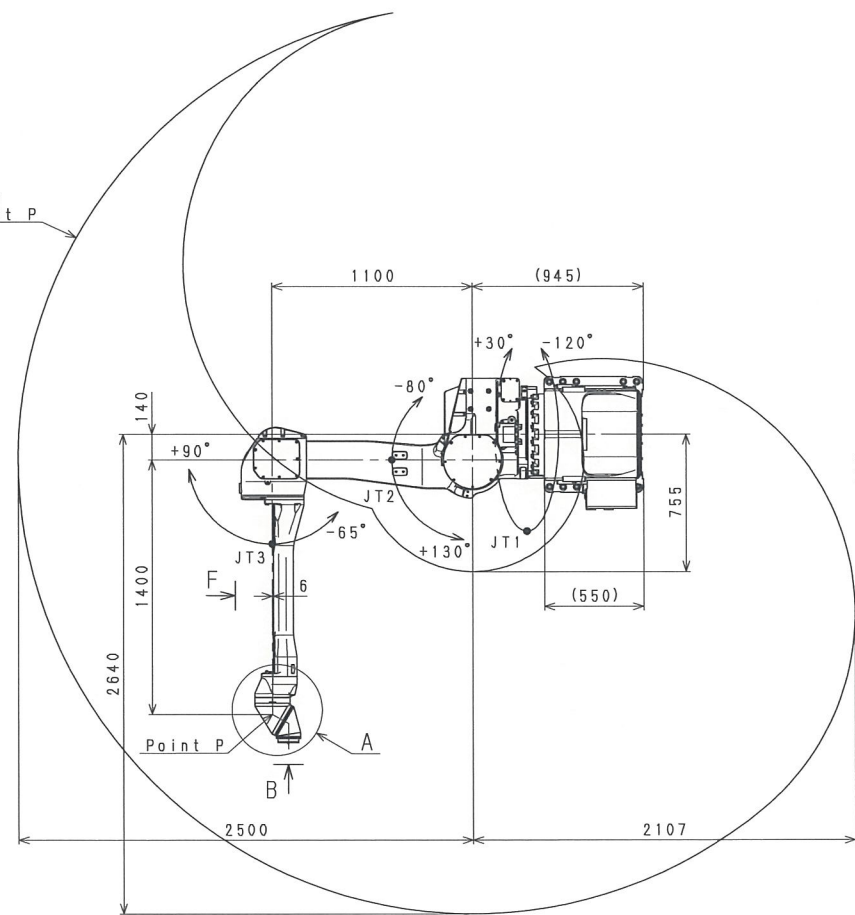
Base Installation Dimensions



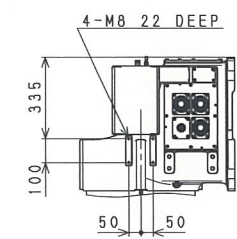
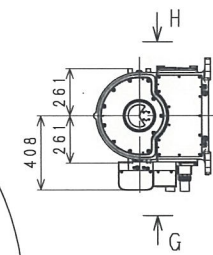
VIEW E



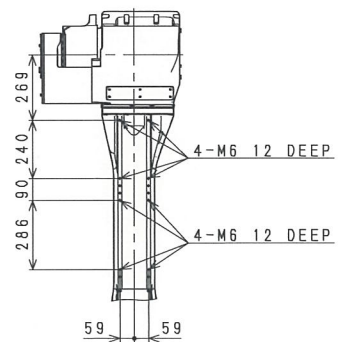
Working range based on point P



VIEW H

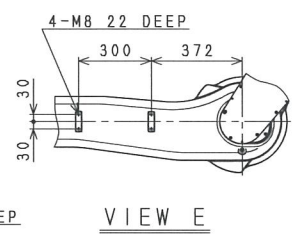
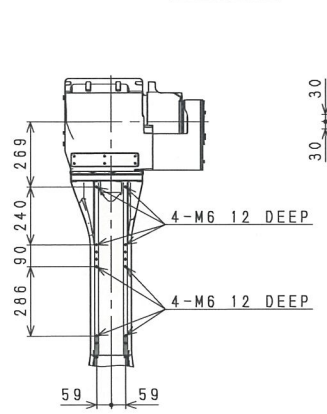
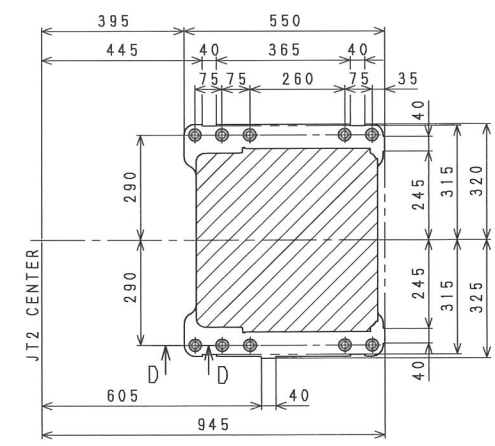
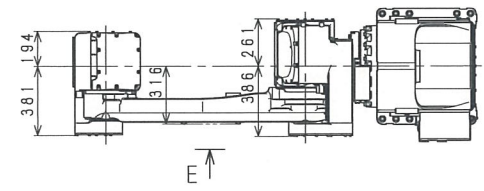
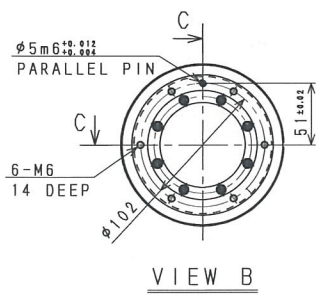
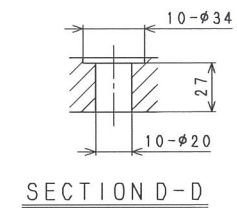
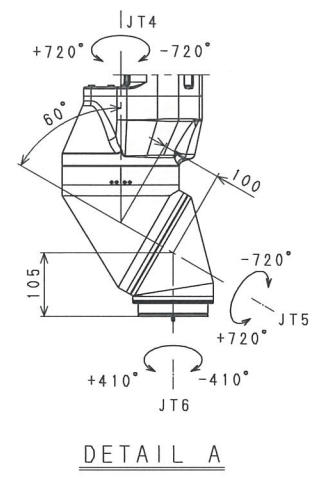
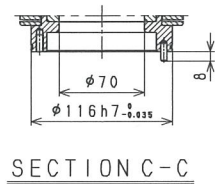


VIEW G

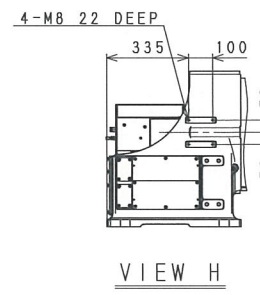
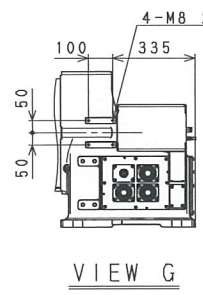
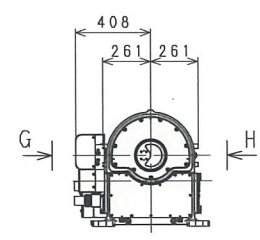
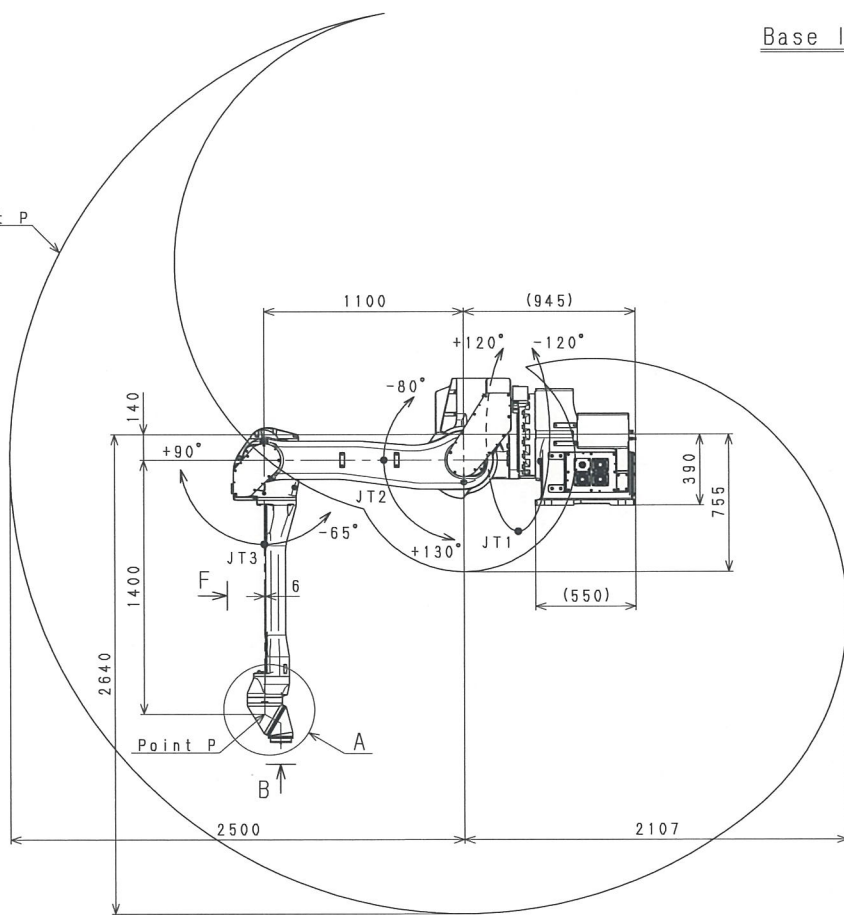
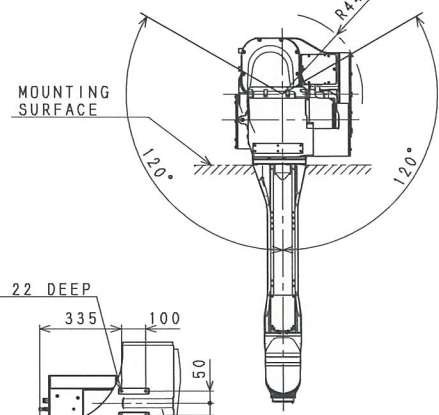


VIEW F

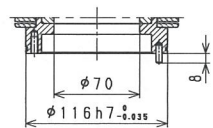
KJ264U-F1
(FLEXIBLE INSTALLATION)
WORKING RANGE



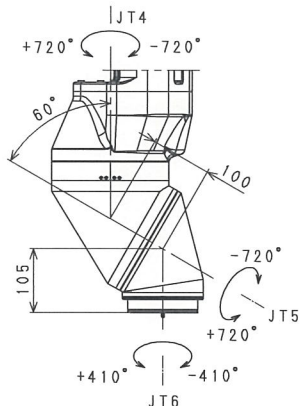
Working range based on point P



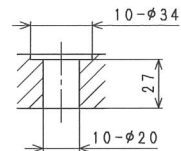
KJ264U-H0
(FLEXIBLE INSTALLATION)
WORKING RANGE



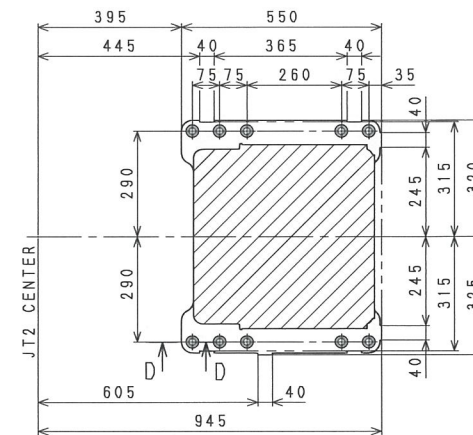
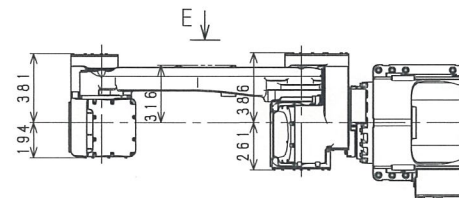
SECTION C-C



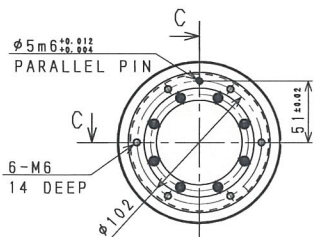
DETAIL A



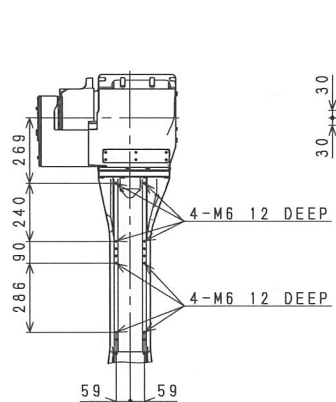
SECTION D-D



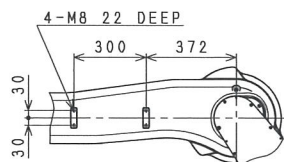
Base Installation Dimensions



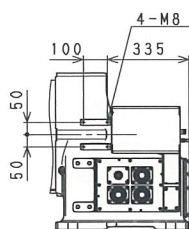
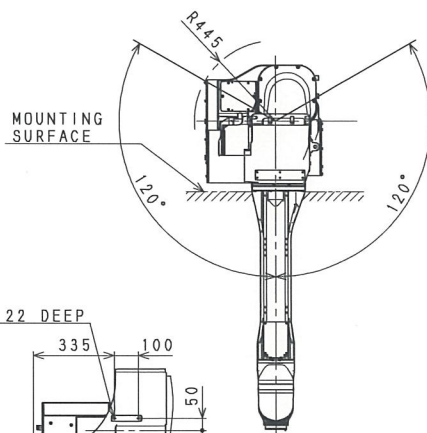
VIEW B



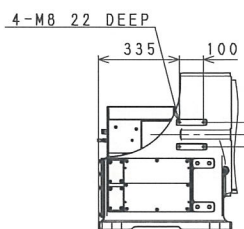
VIEW F



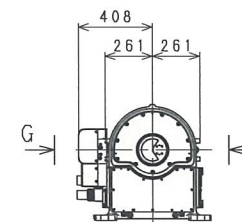
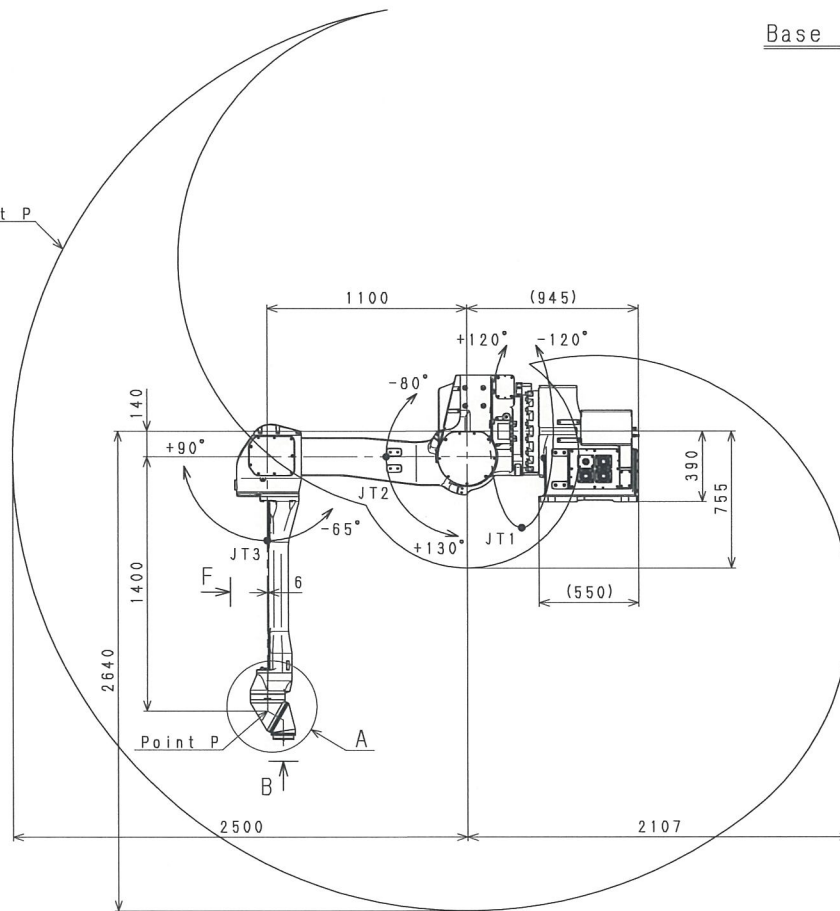
VIEW E



VIEW G



VIEW H



KJ264U-H1
(FLEXIBLE INSTALLATION)
WORKING RANGE