

Quick guide to initial commissioning for robots with CoreCubic-S

Disclaimer

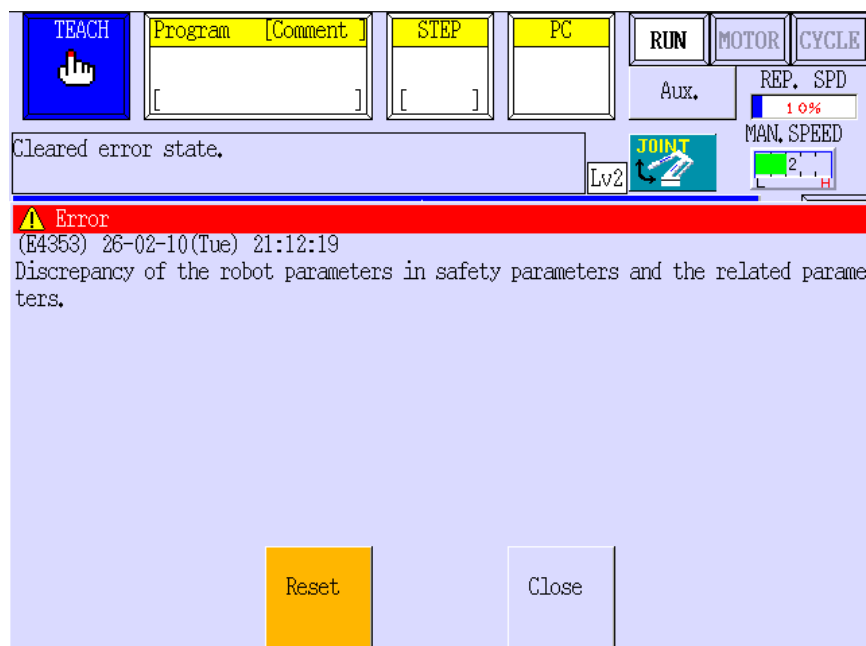
This document is intended solely as a guide for initial commissioning and does not replace training for Cubic-S or CoreCubic-S.

Please also read the manual 90201-1489² carefully.

1. How do I fix error E4353?

After the first start, the following error message may appear:

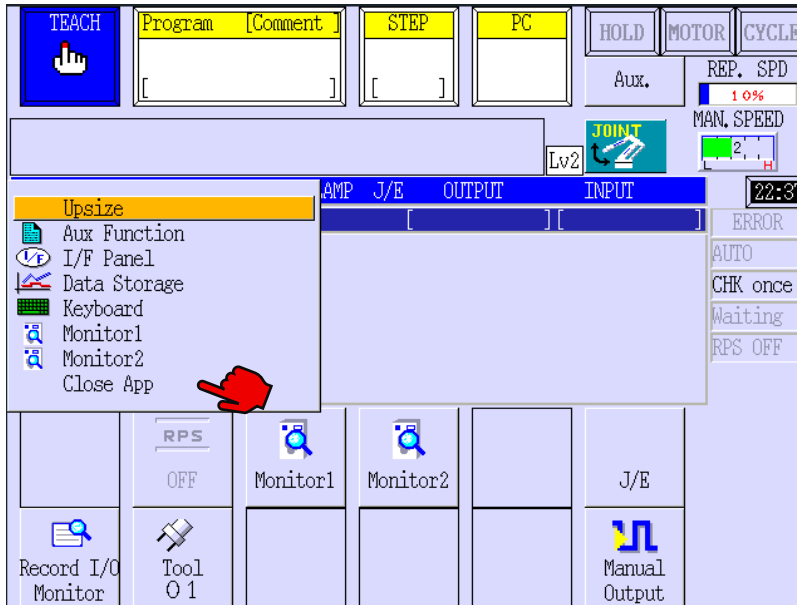
"(E4353) Discrepancy of the robot parameters in safety parameters and the related parameters."



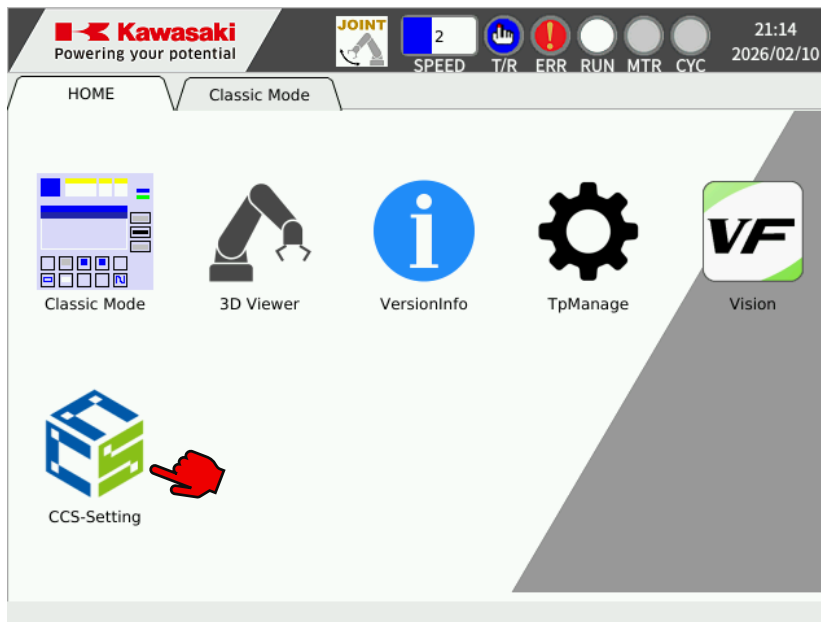
To reset this error, the robot data must be imported into CoreCubic-S.

Please follow these steps:

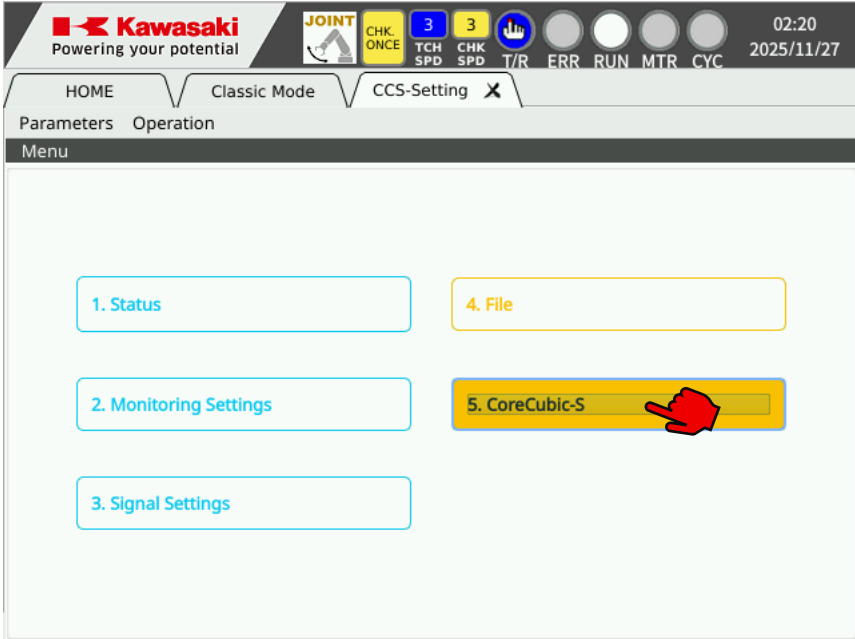
1. Press the "Menu" button and then "Close App" to exit Classic Mode.



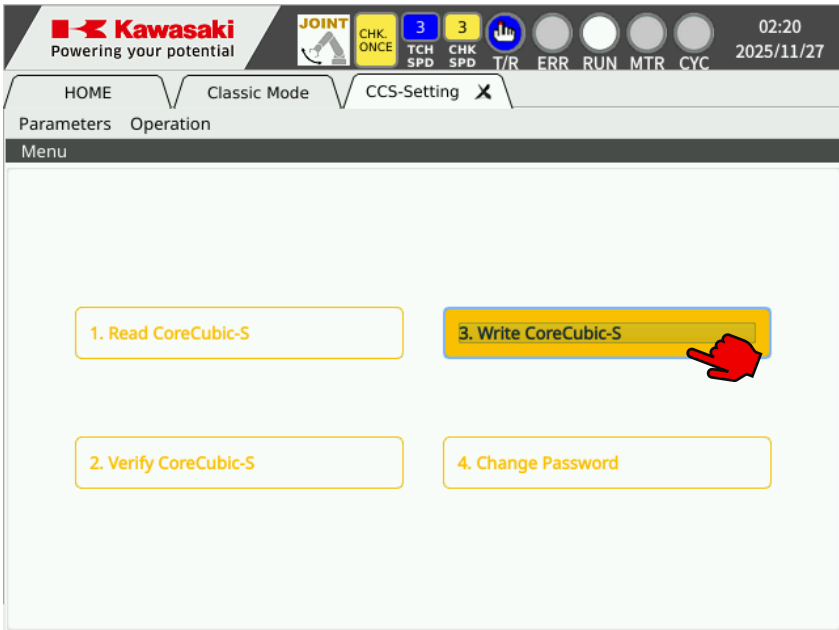
2. Click on the "CCS Setting" icon.



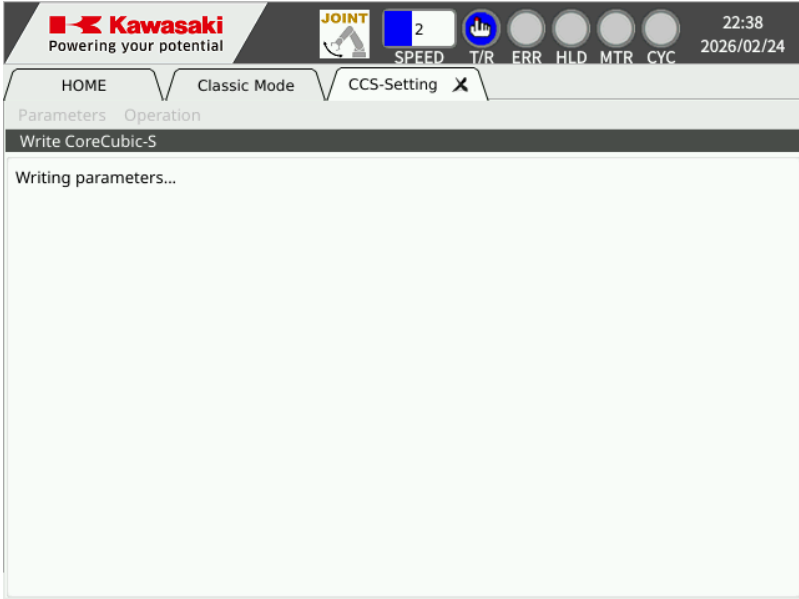
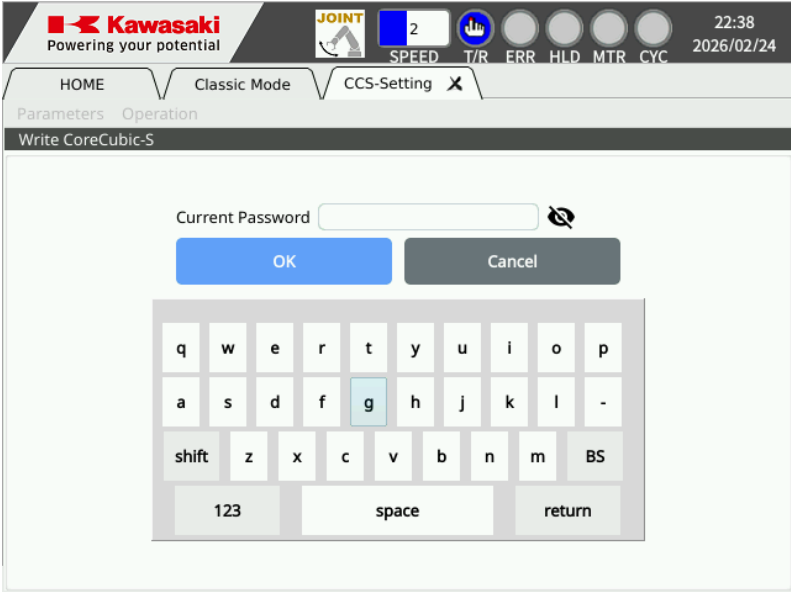
3. Select "5.CoreCubic-S".



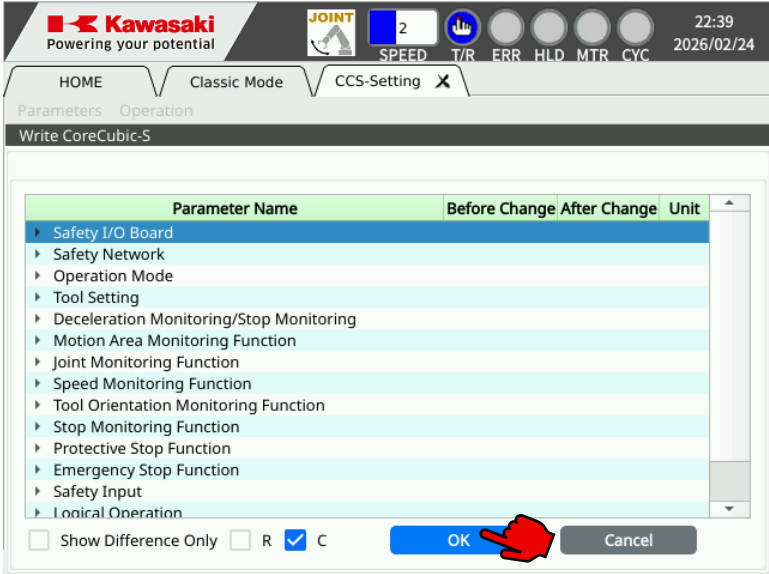
4. Select "3. Write CoreCubic-S".



5. Please enter the **Cubic-S password**⁴ and confirm your entry with the Enter key.

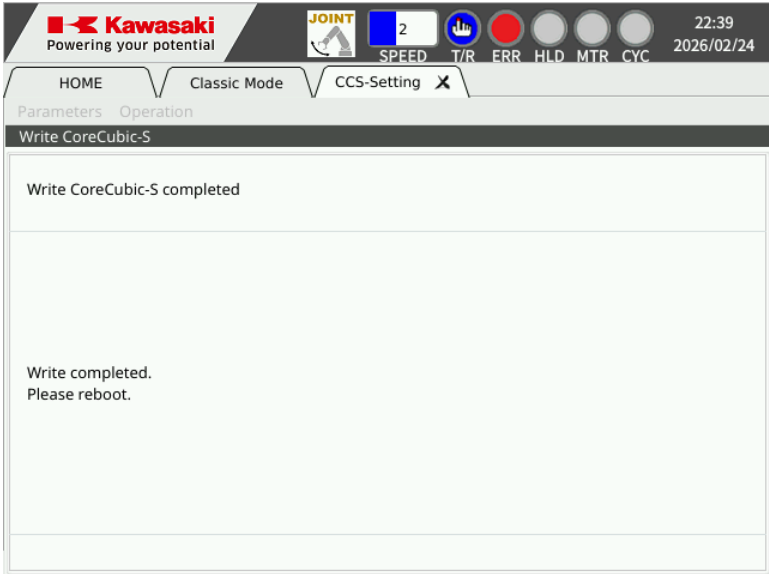


6. Confirm with "OK".

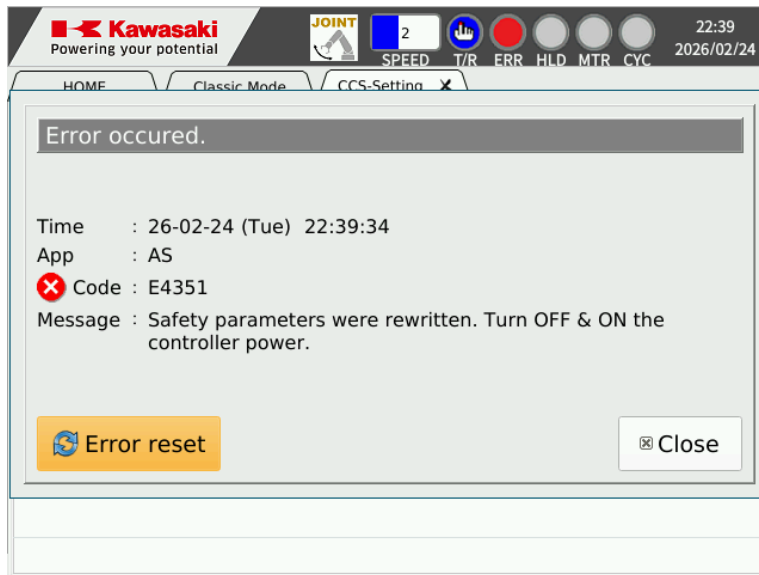


The data will then be transferred to the CoreCubic-S.

After successful writing, the following message appears:



And the following error occurs:



7. Then restart the controller by switching it off and on again.

The error should now no longer occur.

- ¹: e.g. External axes
- ²: The manual is only a source of information and is not a substitute for training. Kawasaki recommends training for Cubic-S or CoreCubic-S. For more information, please contact academy@kawasakirobotics.de
- ³: CoreCubic-S comes in three versions; the pre-installed version is the **Lite version**. For more information, please refer to manual 90201-1489
- ⁴: If you do not know the password, please contact tech-support@kawasakirobotics.de

Short Quick start guide for robots with CoreCubic-S

2026-04: 1nd Edition

Publication: Kawasaki Robotics GmbH

Copyright © 2026 Kawasaki Robotics GmbH